

Tree Canopy Growth Ideas

Citizens for Redondo's Trees

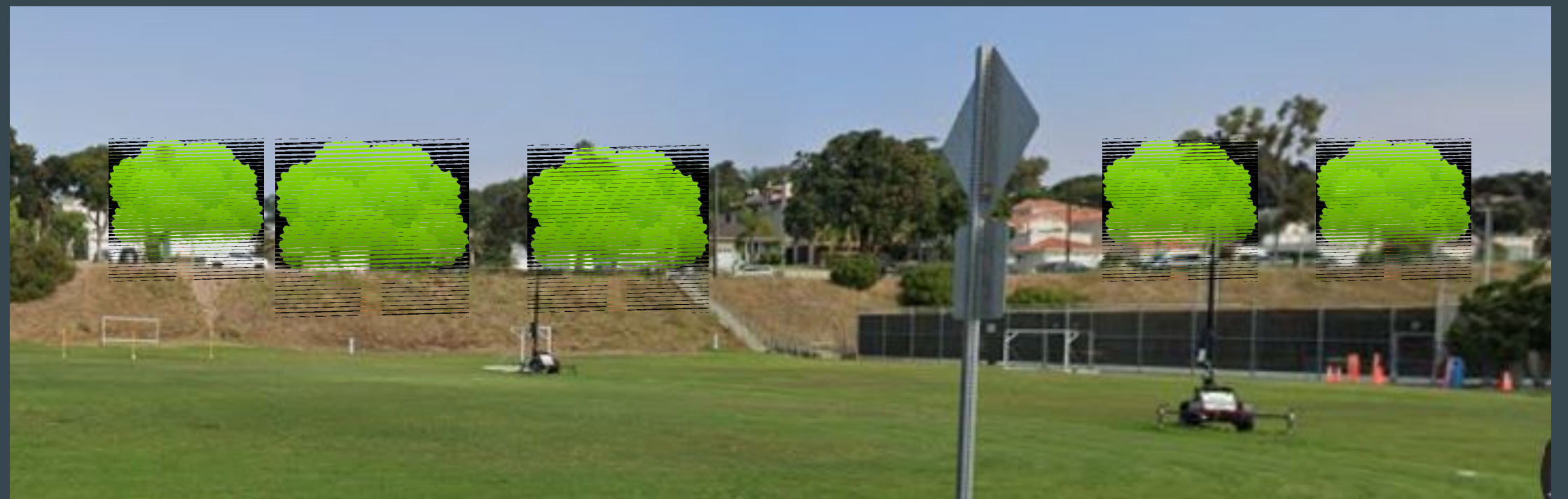
Dec. 2025



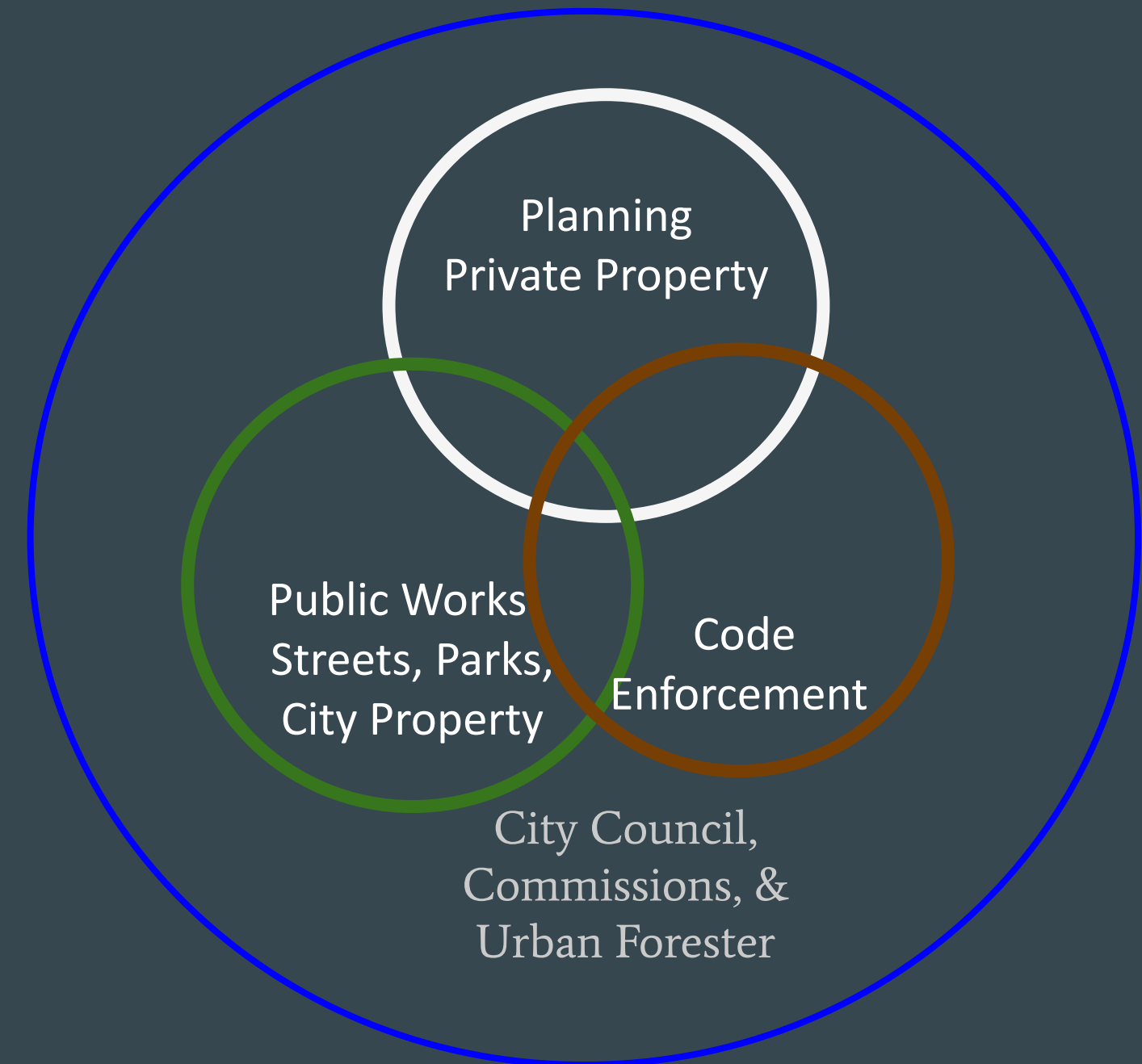
10 Ways to Growth Redondo's Tree Canopy

1. Plant Trees on City Properties
2. Create Tree-centric Internal Review Processes
3. Accountability
4. Learn from other Cities' Standards and Practices
5. Parkway-Sidewalk Designs that Fit a Street's Design, Type, & Use
6. Create and Accept Donations to a Tree Trust Fund
7. Educate and Disseminate Information
8. Urban Forestry Master Plan
9. Embrace Volunteer Help
10. Establish a Designation for Unique Trees

1. Add Shade Trees to City-owned Properties



2. Tree-centric Reviews and Processes



During any project's initial design review, determine the tree locations and needs. Have Staff check that survey, site plan, grading plan, landscape plan, irrigation plan, LID etc. match. Memorialize a property's tree requirements in order to easily verify compliance years from now.

3. Accountability

Verify Required Trees Have Not Been Removed Before Issuing New Licenses, Permits, Entitlements, etc.



In 2022, this parkway contained street trees.

4. Learn from other Cities

Add

Transparent & Objective Tree Planting Standards

Examples:

Concurrent Improvement

If a parkway lacks a parkway tree, prior to a building permit exceeding XXX sq. ft. or permit with a equivalent or greater valuation, a parkway tree and tree well fee shall be paid.

Minimum tree and spacing standards

Parkway trees shall be required for each fifty (50) feet or a fraction thereof of frontage including side frontage. Tree wells shall be required where the parkway width between the sidewalk and curb is less than thirty (30) inches.

5. Select Street Tree Location Based on Street Form and Function

Street Function	Tree Location
Commercial Street with curbside parking	Install Tree Wells, No parkways
Commercial Street with 11' travel lanes without curbside parking	Place Tree in Parkway
Residential Street with curbside parking and 2' parkway	Place Sidewalk next to curb and have 2' landscape area and tree between front yard and sidewalk
Residential Street with utility lines and 2' parkway	Place Sidewalk next to curb and have 2' landscape area and tree between front yard and sidewalk
Residential ROW (40'-50' wide) with no parkway	RBMC Sec. 10-2.1900(e) In the R-1 zone Add distance from dwelling and sidewalk
Medians \geq 3' x 4'	Plant a tree



Large parkways should contain larger shade trees.

6. Establish a Tree Fund



Sources:

- Donations
- Fines
- Development Agreements
- Grants

7. Educate and Disseminate Information

Public Works
LOS ANGELES COUNTY

Service Locator Report a Problem Translate

Residents Businesses About Us Search

PARKWAY TREES | Tree Planting | Tree Trimming | Sidewalk Repair | Resources | Tree Services Locator


PARKWAY TREES
Brochures & Flyers

Home / Core Service Areas / Transportation / Parkway Trees - Brochures & Flyers

Brochures & Flyers

Parkway Trees Brochure


[South County Typical](#) / [North County Typical](#)



County of Los Angeles
Parkway Trees
Creating a Sustainable Urban Forest


Parkway Trees and Concrete Brochure

[South County Typical](#) / [North County Typical](#)




Los Angeles County
PARKWAY TREES & CONCRETE
Creating a Sustainable Urban Forest

Parkway Tree Care Door Hanger



Parkway Tree Care Guide

Parkway Tree Planting Flyer*



Would you like a tree planted in the parkway in front of your home?

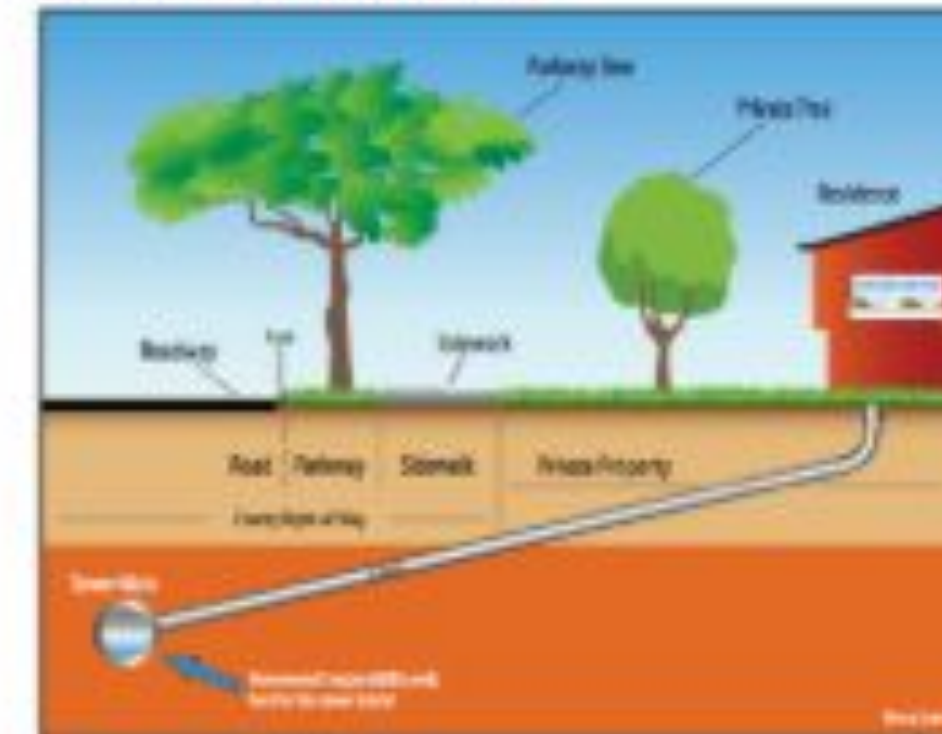
BENEFITS OF HAVING A TREE ON YOUR STREET:

- CO₂
- PM₁₀
- PM_{2.5}
- NO₂
- SO₂
- O₃

If yes, please fill out the form on the back of this flyer.

Parkway Trees and Sewer Laterals

Tree Roots and Sewer Laterals



Trees need water and nutrients in order to survive and will seek out the nearest source for both items. Generally, when searching for the water source, roots will follow the sewer line and grow into the sewer line. If there is a leak, the roots will grow into the leak and multiply, growing on the nutrient rich material. Eventually, these roots may block the sewer and back up sewage. In order to prevent root intrusion, please maintain and monitor the integrity of your sewer line. For more information on sewer lateral maintenance, please visit [all open sewerage projects](#).

Root barrier options (BBI)

Root barrier options can be installed between the tree and the sewer line. The barrier will be installed in the area, which will block the roots from growing into the sewer line. The barrier will be installed in the area, which will block the roots from growing into the sewer line. The barrier will be installed in the area, which will block the roots from growing into the sewer line.

Root barrier options can be installed between the tree and the sewer line. The barrier will be installed in the area, which will block the roots from growing into the sewer line. The barrier will be installed in the area, which will block the roots from growing into the sewer line.

8. Develop an Urban Forestry Management Plan & Employ Professional Urban Forestry Staff



City of Buena Park
Urban Forest Management Plan



 City of Garden Grove



Open Government

Residents

Businesses

Public Safety

Urban Forest Management Plan



CITY OF SANTA BARBARA
URBAN FOREST
MANAGEMENT PLAN

PRESERVING AND PROTECTING
OUR COMMUNITY TREES

URBAN FOREST
MANAGEMENT
PLAN

CITY OF
FREMONT,
CALIFORNIA

APRIL | 2023

EL MONTE URBAN AND COMMUNITY FORESTRY MANAGEMENT PLAN



9. Partner with Community Groups to Plant Trees & to Create Educational Information



Request a **FREE** Parkway Tree

Each year, the City of Redondo Beach budgets to plant dozens of parkway trees in front of homes. Add your name to the list — it's free!



How will a tree benefit you and your neighbors?

Provides shade, cooling your home and making neighborhood walks nicer.

Beautifies the neighborhood and boosts property values by thousands.

Increases privacy and reduces street noise by buffering sound.

REQUEST YOUR TREE

Call Juan at **310-697-3611** or email Juan.Olguin@redondo.org

"The best time to plant a tree was 20 years ago.

The second best time is now." — CHINESE PROVERB

This notice courtesy of CITIZENS FOR REDONDO'S TREES. To get involved, email redondo4trees@gmail.com

10. Designate Historic Trees

Trees are a part of Redondo Beach's collective heritage and have earned our esteem.

