

Enhanced Response to Homelessness Update

History

2014: City Manager created Homeless Task Force

2016: PATH, MET, Quality of Life Officer and Quality of Life Prosecutor

2017: Harbor Interfaith

2018: Beach Cities Housing navigation

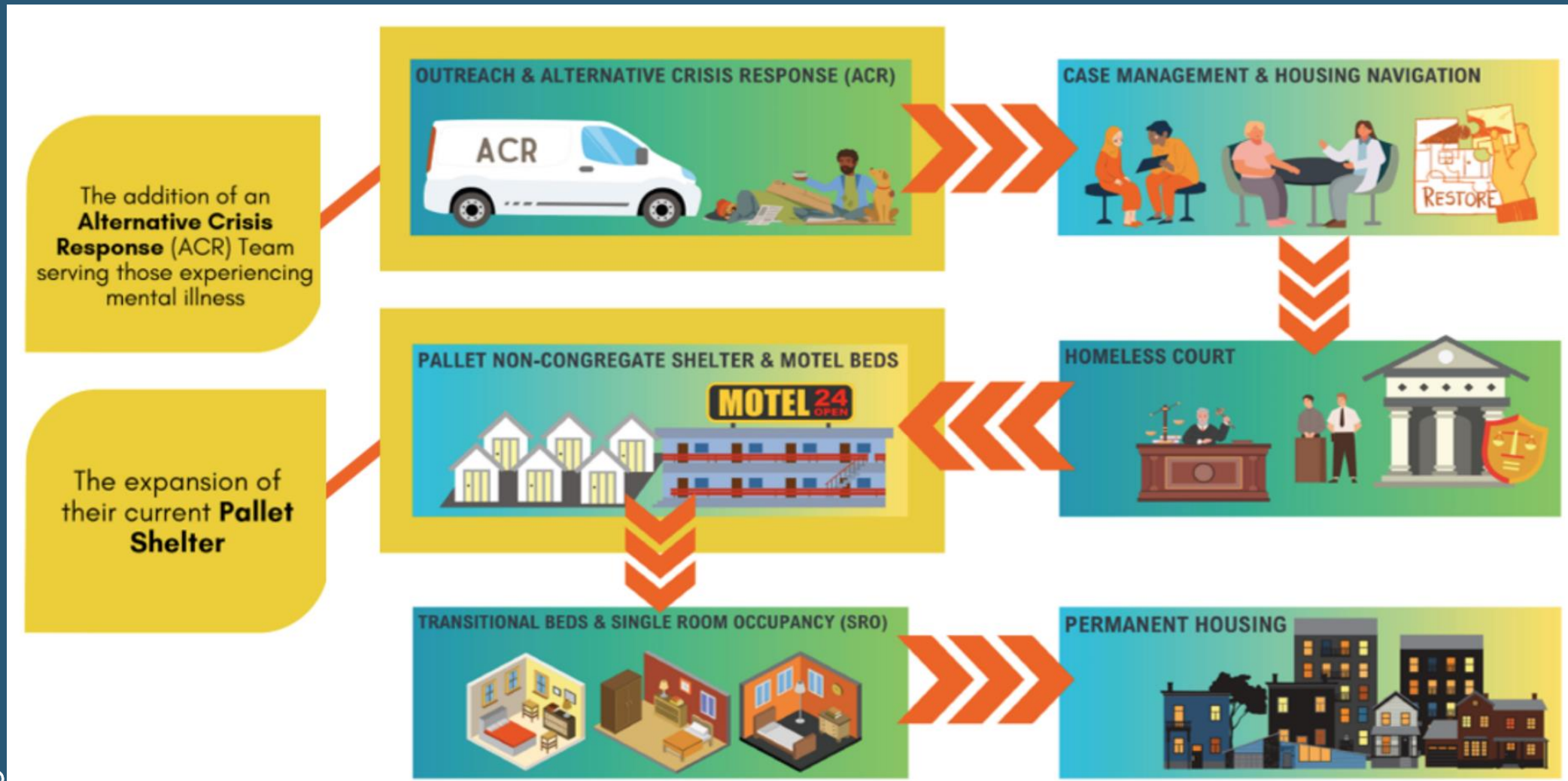
April 2019: Five year plan approved by Council for Measure H funds

June 2019: Enhanced Response to Homelessness Pilot

Enhanced Response To Homelessness

- 2019 – Indoor Homeless Court
- 2020 – Outdoor Homeless Court; Pallet Shelter
- 2021 – Bridge housing, City Net (census and outreach)
- 2022 – Added 5 more units to Pallet shelter, Received Helen Putnam Award, Employed Homeless Housing Navigator
- 2023 – Added 13 units to bridge housing
- 2024 – Moonstone PSH, Functional Zero in Street Homelessness
- 2025 – Employed Homeless Housing Supervisor, ACR Team, new Beach Cities team

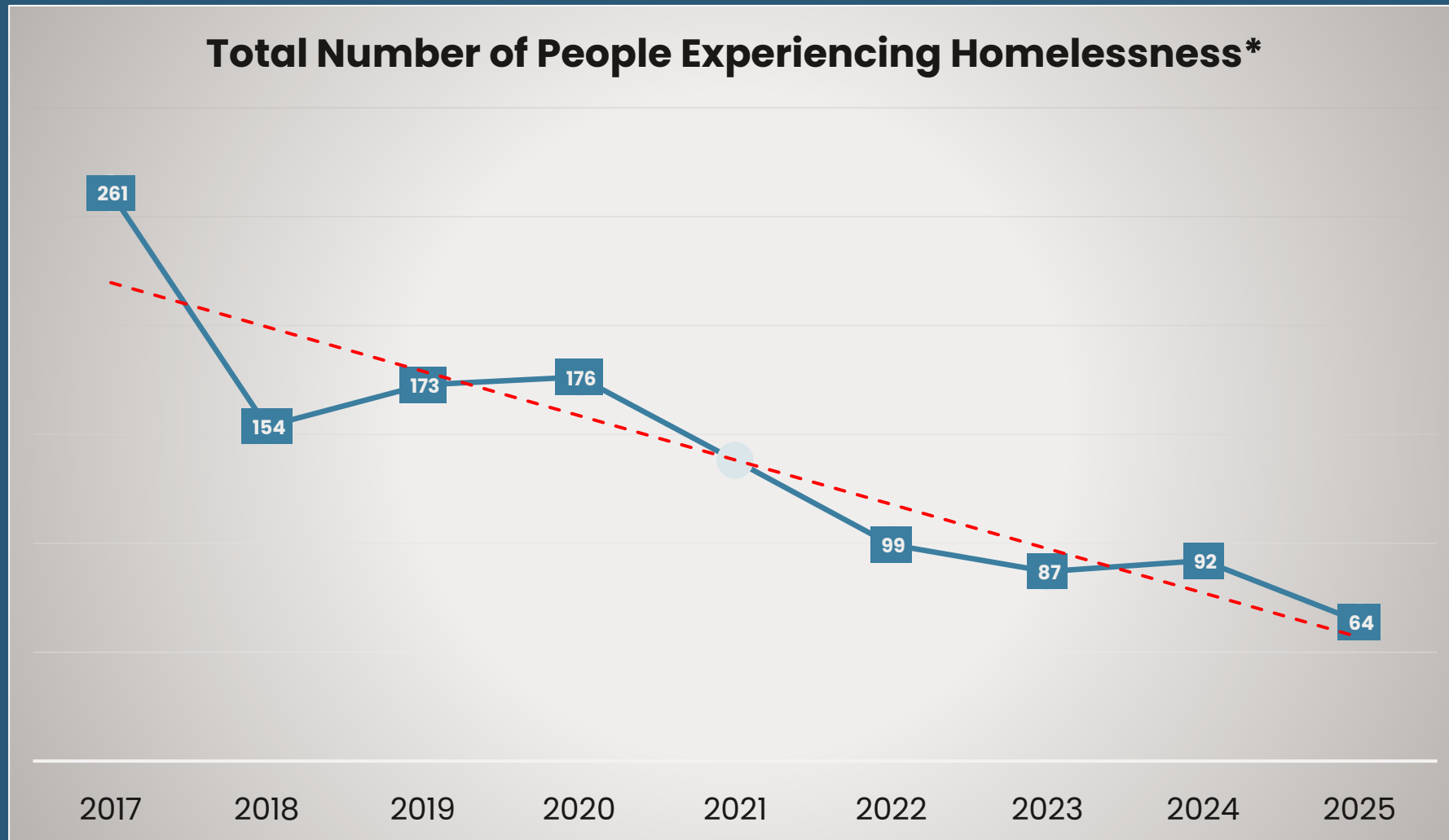
Redondo Beach Continuum of Care



Grants (\$2.9 million)

- Health Net
- Assemblymember Al Muratsuchi
- Supervisor Holly Mitchell
- SBCCOG – Measure H & A
- PLHA
- Successor Agency
- Clear, HERO, Pallet extension
- Homeless Court, Ana Papadakis
- Pallet extension
- Clear, Swami
- Pallet operations
- Harbor Interfaith

County PIT



2024 and 2025 PIT

2024

Sheltered Persons Staying in Temporary Shelter

Data collected from service providers.

20 Total Sheltered Persons

Some 2024 Homeless Count shelter counts are lower than they were at the time of the publication of the 2024 Homeless Count results. This is due to the exclusion of some shelter data done to ensure a fair comparison with the 2025 Homeless Count results, which exclude scattered site programs from some reporting. The data for these programs were not collected in a way that allows for accurate reporting at this dashboard's level of detail. LAHSA is working to enhance reporting for this level of detail in Homeless Count 2026.

Visual Tally of Unsheltered Persons and Dwellings

Data collected from volunteers and community members on the nights of the count.

18 Total Unsheltered Persons not in a Dwelling

54 Total Dwellings

Counts indicate observed dwellings and do not indicate how many persons were staying in the dwellings.

14

Cars



26

Vans



7

RVs



0

Makeshift Shelters



7

Tents



2025

Sheltered Persons Staying in Temporary Shelter

Data collected from service providers.

20 Total Sheltered Persons

Some 2024 Homeless Count shelter counts are lower than they were at the time of the publication of the 2024 Homeless Count results. This is due to the exclusion of some shelter data done to ensure a fair comparison with the 2025 Homeless Count results, which exclude scattered site programs from some reporting. The data for these programs were not collected in a way that allows for accurate reporting at this dashboard's level of detail. LAHSA is working to enhance reporting for this level of detail in Homeless Count 2026.

Visual Tally of Unsheltered Persons and Dwellings

Data collected from volunteers and community members on the nights of the count.

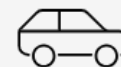
17 Total Unsheltered Persons not in a Dwelling

27 Total Dwellings

Counts indicate observed dwellings and do not indicate how many persons were staying in the dwellings.

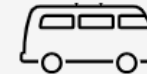
9

Cars



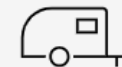
10

Vans



8

RVs



0

Makeshift Shelters



0

Tents



RECOMMENDATION

Receive and File Report