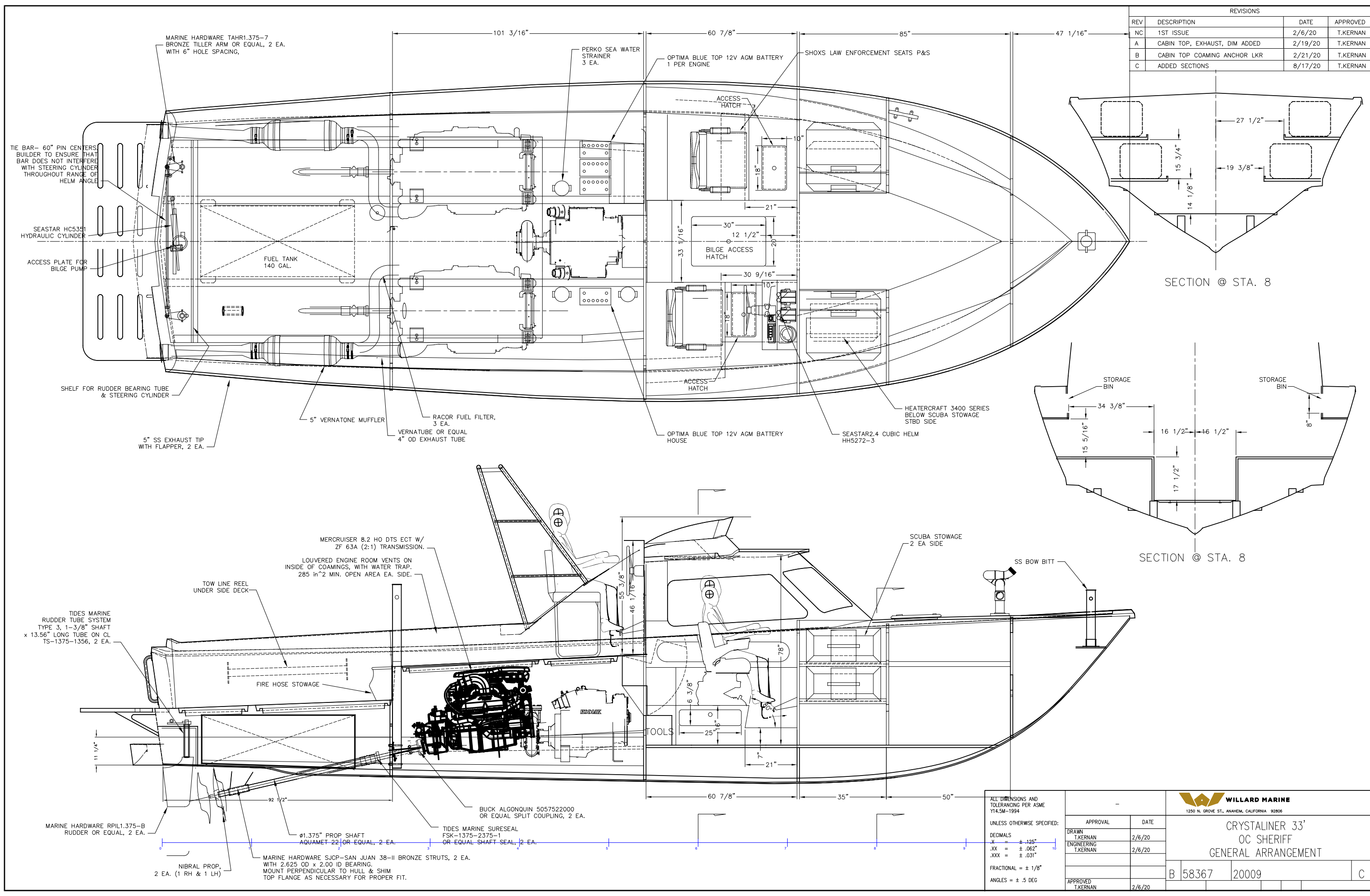


REVISIONS			
REV	DESCRIPTION	DATE	APPROVED
NC	1ST ISSUE	2/6/20	T.KERNAN
A	CABIN TOP, EXHAUST, DIM ADDED	2/19/20	T.KERNAN
B	CABIN TOP COAMING ANCHOR LKR	2/21/20	T.KERNAN
C	ADDED SECTIONS	8/17/20	T.KERNAN



ALL DIMENSIONS AND TOLERANCING PER ASME Y14.5M-1994  
 UNLESS OTHERWISE SPECIFIED:  
 DECIMALS  
 .X = ± .125"  
 .XX = ± .062"  
 .XXX = ± .031"  
 FRACTIONAL = ± 1/8"  
 ANGLES = ± .5 DEG

APPROVAL	DATE
DRAWN T.KERNAN	2/6/20
ENGINEERING T.KERNAN	2/6/20
APPROVED T.KERNAN	2/6/20

**WILLARD MARINE**  
 1250 N. GROVE ST., ANAHEIM, CALIFORNIA 92806  
**CRYSTALLINER 33'**  
**OC SHERIFF**  
**GENERAL ARRANGEMENT**  
 B 58367 20009 C