

Jessica Handlin

From: Ryan Liu
Sent: Monday, June 23, 2025 8:42 AM
To: Jessica Handlin
Cc: Jesse Reyes
Subject: FW: Blue Folder Comment: PWSC J2
Attachments: BLUE FOLDER J2 Support Presentation for Mark Nelson 6-23-25 (FINAL).pdf

Here is a new blue folder item for Prospect.

Ryan Liu, PE

Redondo Beach | Traffic Engineering

From: Mark Nelson (Home Gmail) <[REDACTED]>
Sent: Sunday, June 22, 2025 05:36 PM
To: Cindi Arrata <Cindi.Arrata@redondo.org>; Candace Nafissi <Candace.Nafissi@redondo.org>; John Simpson <John.Simpson@redondo.org>; Andrew Beeli <Andrew.Beeli@redondo.org>; Jay Tsao <Jay.Tsao@redondo.org>; Steven Anderson <Steven.Anderson@redondo.org>; Bhuvan Bajaj <Bhuvan.Bajaj@redondo.org>; Traffic Engineering <trafficengineering@redondo.org>; Paige Kaluderovic <Paige.Kaluderovic@redondo.org>; James Light <james.light@redondo.org>
Subject: Blue Folder Comment: PWSC J2

CAUTION: Email is from an external source; **Stop, Look, and Think** before opening attachments or links.

Please insert the attached comment into the PWSC blue folder for Monday night. Thank you.

Blue Folder Item from Mark Nelson for Discussion During Public Comment

Item J2 – Prospect Frontage Road

Because public comment time is limited (3 minutes) I am providing this packet of supporting evidence for my public comment.

I can be reached by email at [REDACTED] for questions

KEY POINTS

The 26-foot frontage is very narrow for 2-side parking and 2-way traffic

The intersection is confusing with 1-way traffic meeting 2-way traffic and intersecting with BCHD and Prospect

Parking within the intersection is SOUTH FACING –the Wrong-Way for the one-way segment

There are 68 on-street spaces for 27 houses on the Frontage. At 2.5 on-street spaces per home, WE MUST BE AMONG THE MOST PARKING RICH RESIDENTIAL STREETS IN REDONDO

This is the first revamp of the Frontage in OVER 30 YEARS.

In 75%+ of Wrong-Way turns, one or more cars are parked in the intersection south facing. PARKING IN THE INTERSECTION IS NOT A DETERENT TO ILLEGAL ACTION WHATSOEVER.

Preserving 1 or 2 parking spots (2.5% of the overall stock) while compromising safety is short-sighted, dangerous, and could set the City up for litigation in the event a pedestrian or bicyclist is struck after the redesign.

Please value PUBLIC SAFETY above PERSONAL CONVENIENCE

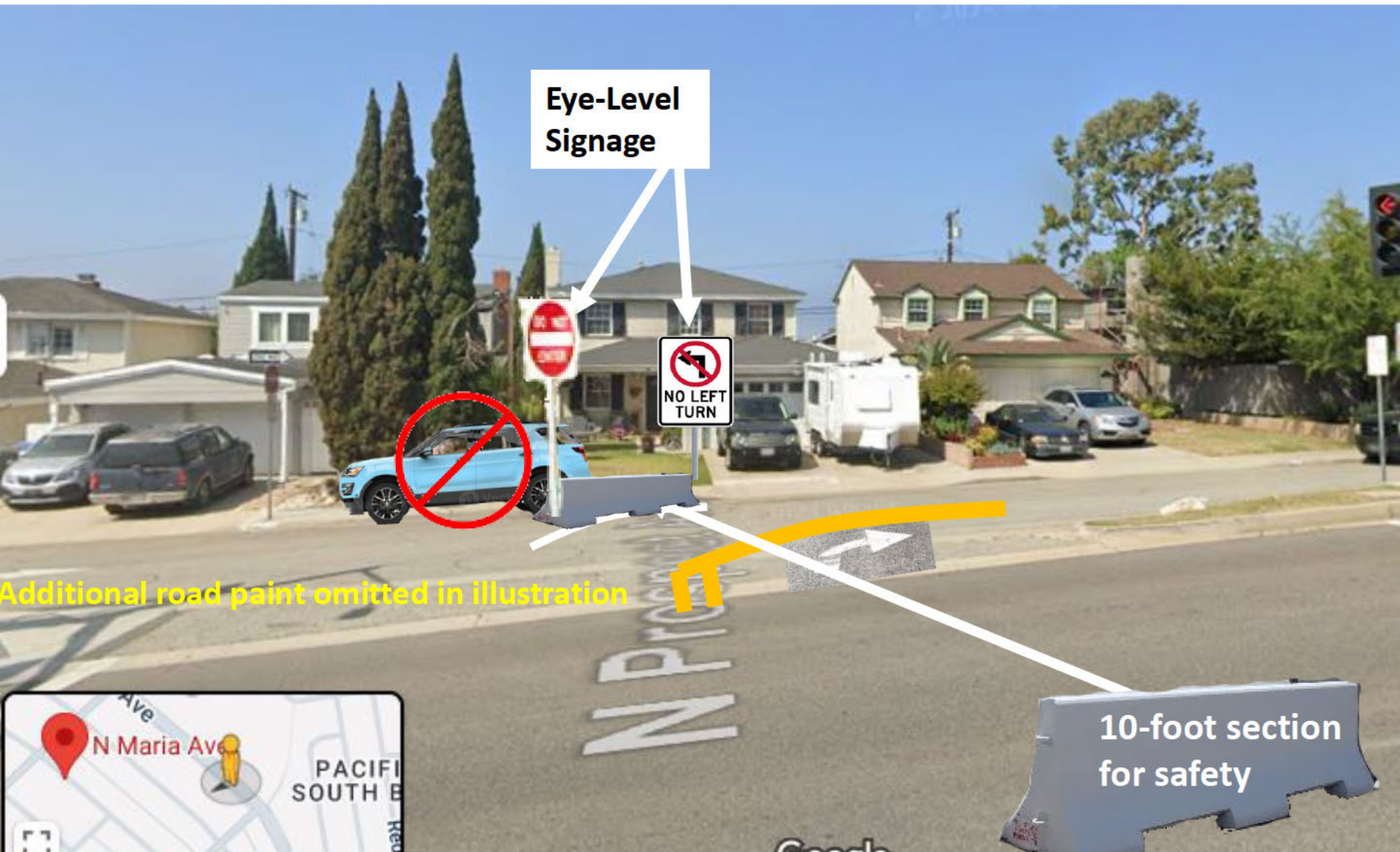
SUPPORT ONLY DO NOT ENTER and NO LEFT TURN VISUAL CUES AT THE INTERSECTION

REJECT A 2000 to 6000 POUND VEHICLE POINTED SOUTH AS A VISUAL CUE

Thank you.

NO VEHICLE PARKING ALTERNATIVE

DON'T SEND ANY MIXED MESSAGES REGARDING DIRECTION OF FLOW WITH A SOUTHBOUND PARKED VEHICLE



Safety is an issue at the Frontage Rd Intersection

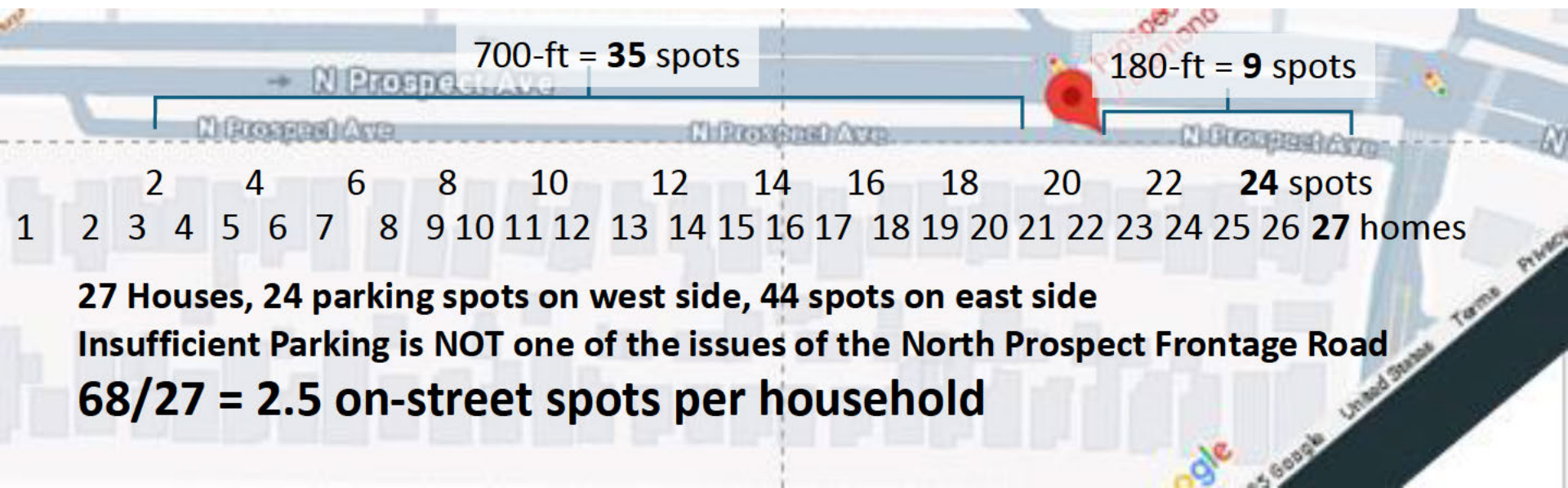
#1 – Illegal, Wrong-Way U-Turns off Prospect

#2 – Visibility into the Bus Stop area

#4 – Wrong-Way Non-Resident Through Traffic

#4 – Wrong-Way Resident Traffic

Thankfully, PARKING is plentiful with 2.5 on-street spaces per house



Photos of ample on-street parking availability

South-facing toward Diamond

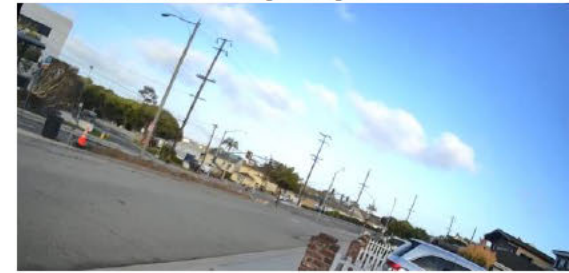
7AM – 6/20/25



Noon – 6/20/25



7PM – 6/20/25

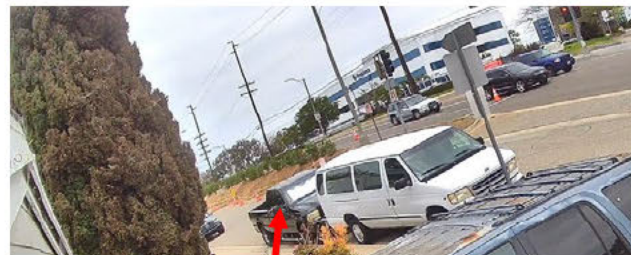


North-facing toward Beryl

7AM – 6/20/25



Noon – 6/20/25

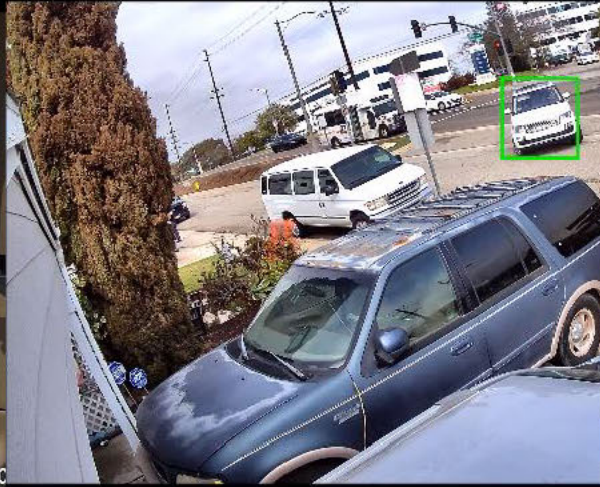


7PM – 6/20/25

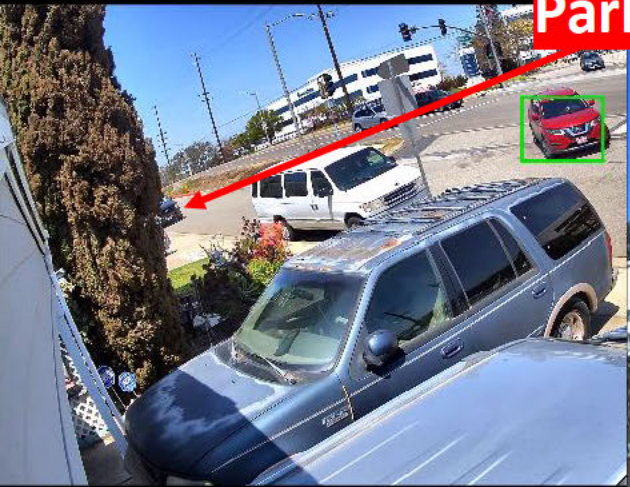


**CVC 22500 (e)(1) Violation
Parked Across Driveway**

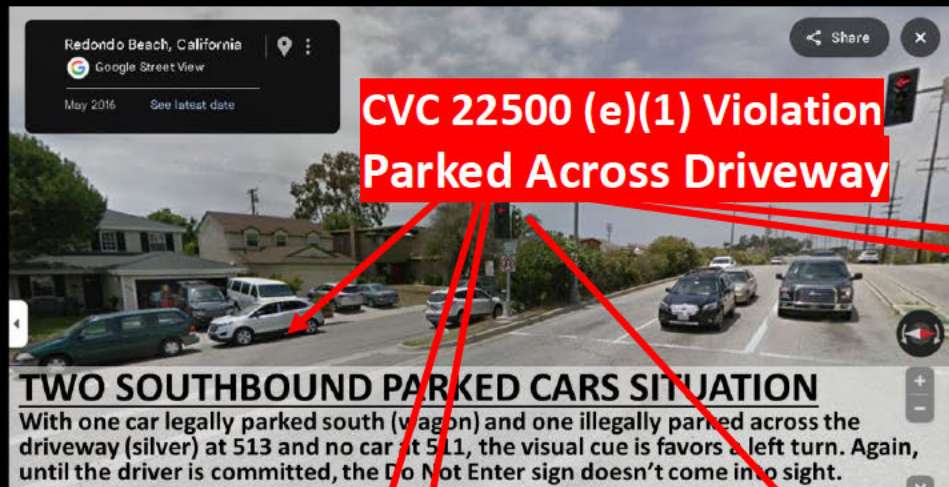
Parked Cars Do Not Inhibit Illegal U-Turns



CVC 22500 (e)(1) Violation
Parked Across Driveway



Parked Cars More Likely to Provide Confirmation Bias that Southbound is OK

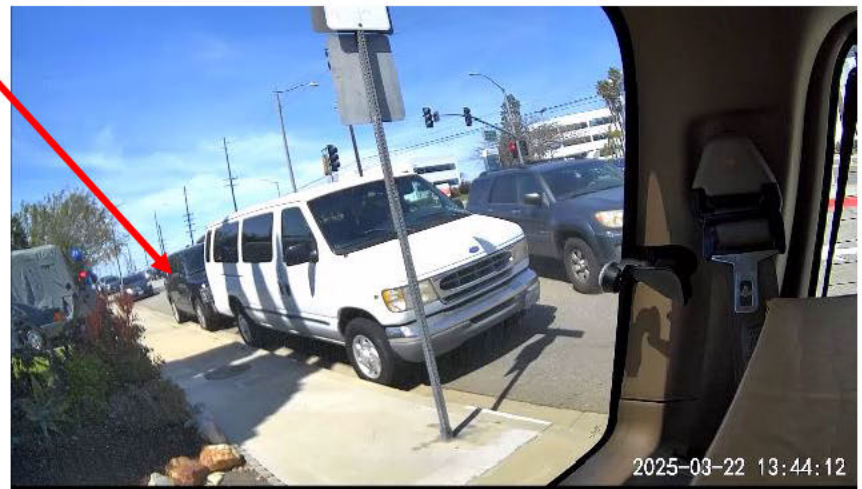


THREE SOUTHBOUND PARKED CARS SITUATION
Due to the unavailability of Google Earth photos, this photo from a security system was used. It is the from the West of the same parking spots. With one car legally parked south (van) and one illegally parked across the driveway (black pickup) at 513 and one car parked illegally south at 511 (gray SUV), the visual cue clearly favors a left turn. Again, until the driver is committed, the Do Not Enter sign doesn't come into sight.



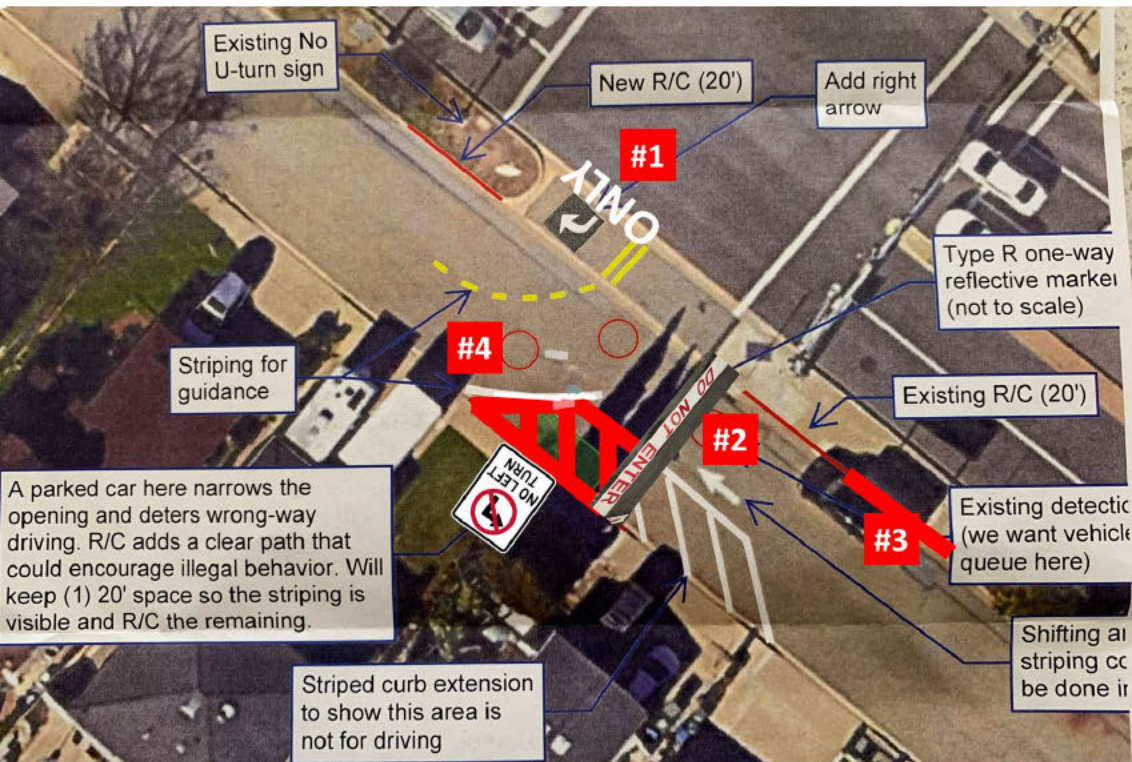
THREE SOUTHBOUND PARKED CARS SITUATION

THIS IS AN ALTERNATIVE VIEW OF 3 SOUTHBOUND BECAUSE IT LEAVES AN EMPTY SPACE IN FRONT OF 511. Due to the unavailability of Google Earth photos, this photo from a security system was used. It is the from the West of the same parking spots. With one car legally parked south in front of 513 (van) and one illegally parked across the driveway (black SUV) at 513 and one car parked illegally south across 515 (black SUV), the visual cue clearly favors a left turn. Again, until the driver is committed, the Do Not Enter sign doesn't come into sight.



Vehicles Do Not Inhibit Illegal U-Turns

REQUESTED SAFETY ACTIONS



#1 – “ONLY” Allowed by MUCTD for more restrictive, exclusive turn arrows

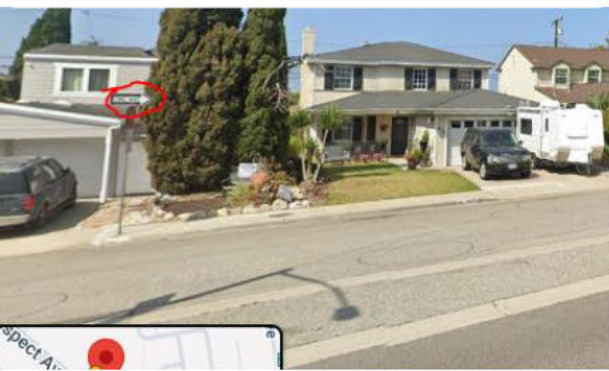
#2 – DO NOT ENTER pavement paint. Stated MUCTD compliant by Caltrans

#3 – Red Curb for Visibility and Safety of the Bus Stop. Univ of CA recommends clear visibility for safety. MUCTD allows discretionary red curb visibility/safety use. CHILD PREDATOR INVESTIGATIONS IN AREA PROVIDE COMPELLING EVIDENCE.

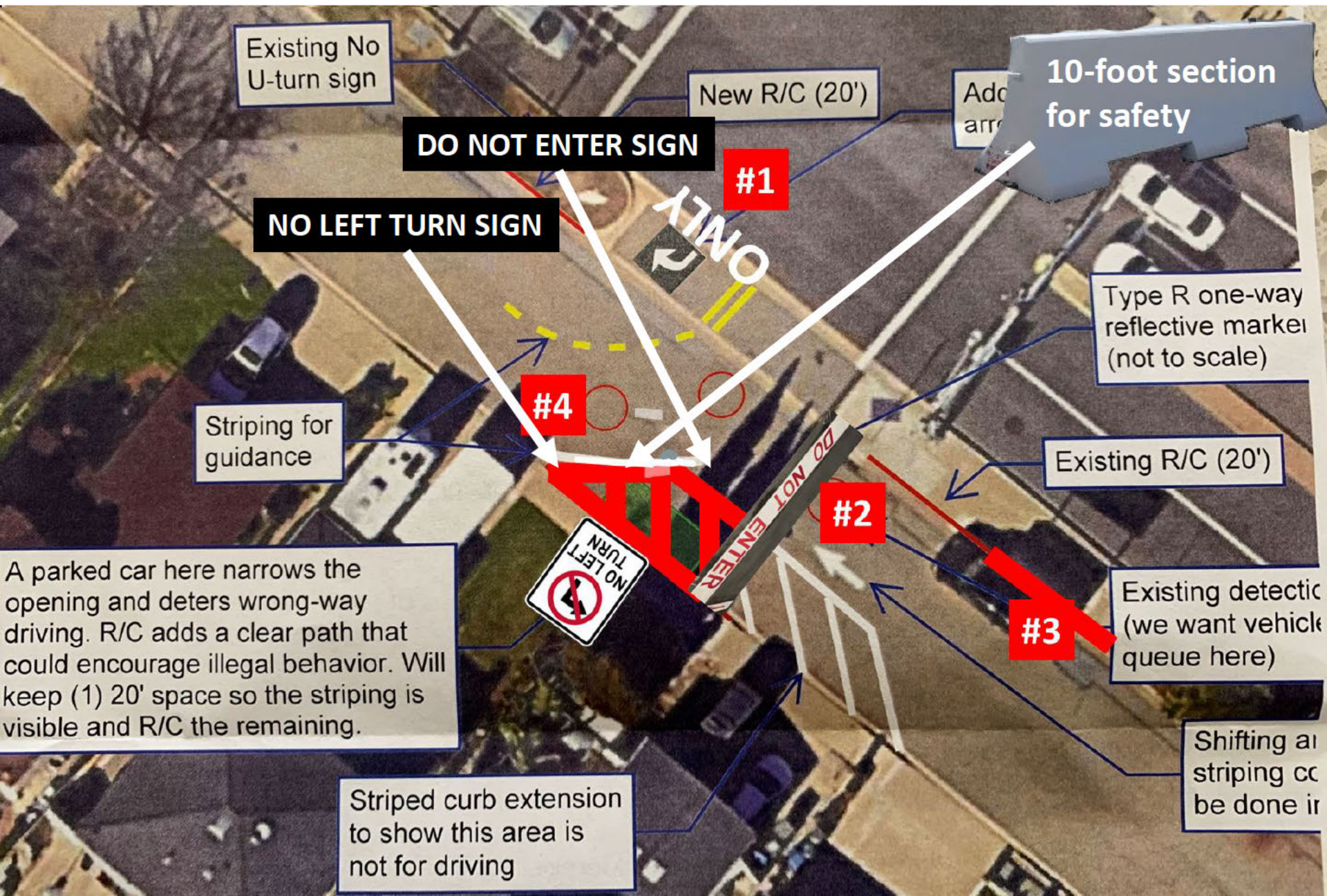
#4 – Removal of parking, installation of No Left Turn. Current One-Way sign is ineffective. Visual driver cue from southbound parked vehicles that encourage illegal left turns

In over half of illegal wrong way turns, white van was parked southbound. In over three-quarters of illegal wrong-way turns at least some vehicle was present facing Southbound

Current One-Way Sign is Ineffective



Alternative for Higher Safety – K-rail or other barrier material



Alternative for Higher Safety – K-rail or other barrier material

Add signage at each end of K-rail for clarity and safety

