



TRAFFIC CONTROL  
OPAL STREET AT  
IRENA AVENUE

The City Manager presented a memorandum dated July 12, 1973, from the City Engineer recommending that stop signs not be installed on Opal Street at Irena Avenue because both streets are minimal traffic streets, and stop signs are in place on

-13-

Irena Avenue at this intersection. The City Engineer recommended that the stop bar painted on Irena for traffic going north be moved forward approximately three feet.

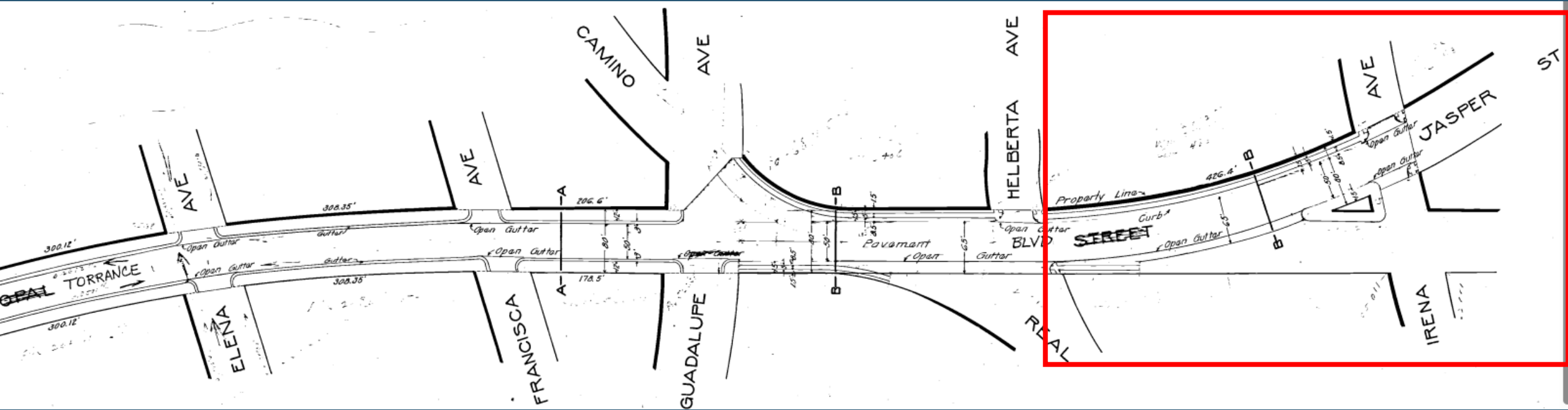
It was moved by Councilman Solomon and seconded by Councilman Burke to concur with the recommendation that stop signs not be placed on Opal Street at Irena Avenue, and that the stop bar on Irena Avenue for northbound traffic be moved approximately three feet forward. The motion carried by the following vote:

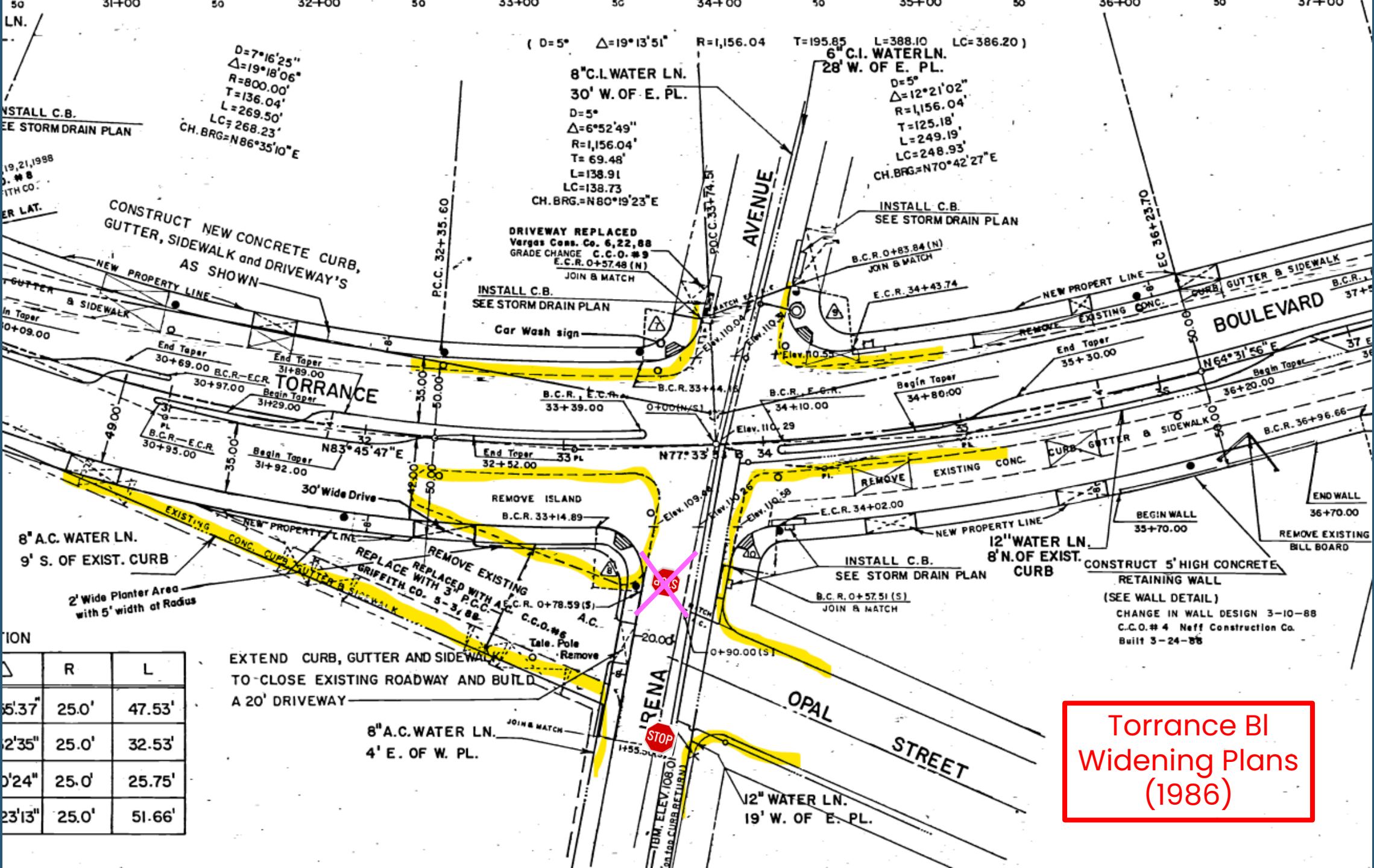
AYES:	Solomon, Burke, Westerfield, DeCou, Nielsen;
NOES:	None.

j1 7-16-73

Council affirming  
Opal/Irena to remain  
two-way stop (stops on  
Irena) (1973)

In 1916, entire alignment was Opal Street before renaming to Torrance Blvd and realigning away from Opal.





INSTALL C.B.  
SEE STORM DRAIN PLAN

$D=7^{\circ}16'25''$   
 $\Delta=19^{\circ}18'06''$   
 $R=800.00'$   
 $T=136.04'$   
 $L=269.50'$   
 $LC=268.23'$   
 $CH. BRG=N86^{\circ}35'10''E$

(  $D=5^{\circ}$   $\Delta=19^{\circ}13'51''$   $R=1,156.04$   $T=195.85$   $L=388.10$   $LC=386.20$  )

8" C.I. WATER LN.  
30' W. OF E. PL.  
 $D=5^{\circ}$   
 $\Delta=6^{\circ}52'49''$   
 $R=1,156.04'$   
 $T=69.48'$   
 $L=138.91$   
 $LC=138.73$   
 $CH. BRG=N80^{\circ}19'23''E$

6" C.I. WATER LN.  
28' W. OF E. PL.  
 $D=5^{\circ}$   
 $\Delta=12^{\circ}21'02''$   
 $R=1,156.04'$   
 $T=125.18'$   
 $L=249.19'$   
 $LC=248.93'$   
 $CH. BRG=N70^{\circ}42'27''E$

CONSTRUCT NEW CONCRETE CURB,  
GUTTER, SIDEWALK and DRIVEWAY'S  
AS SHOWN

DRIVEWAY REPLACED  
Vargas Cons. Co. 6,22,88  
GRADE CHANGE C.C.O.#9  
E.C.R. 0+57.48 (N)  
JOIN & MATCH

INSTALL C.B.  
SEE STORM DRAIN PLAN

End Taper  
30+69.00 B.C.R.—E.C.R.  
30+97.00  
Begin Taper  
31+29.00

B.C.R., E.C.R.  
33+39.00

B.C.R., E.C.R.  
34+10.00

Begin Taper  
34+80.00'

BOULEVARD

TORRANCE

End Taper  
32+52.00

REMOVE EXISTING CONC.

BEGIN WALL  
35+70.00

8" A.C. WATER LN.  
9' S. OF EXIST. CURB

REMOVE ISLAND  
B.C.R. 33+14.89

12" WATER LN.  
8' N. OF EXIST. CURB

CONSTRUCT 5' HIGH CONCRETE  
RETAINING WALL  
(SEE WALL DETAIL)  
CHANGE IN WALL DESIGN 3-10-88  
C.C.O.# 4 Neff Construction Co.  
Built 3-24-88

2' Wide Planter Area  
with 5' width at Radius

REPLACE EXISTING  
GUTTER & SIDEWALK  
REPLACED WITH 3" P.C.C.  
GRIFFITH CO. 5-31-88  
C.C.O.#6

INSTALL C.B.  
SEE STORM DRAIN PLAN

EXTEND CURB, GUTTER AND SIDEWALK  
TO CLOSE EXISTING ROADWAY AND BUILD  
A 20' DRIVEWAY

8" A.C. WATER LN.  
4' E. OF W. PL.

12" WATER LN.  
19' W. OF E. PL.

	R	L
5:37"	25.0'	47.53'
2:35"	25.0'	32.53'
0:24"	25.0'	25.75'
23:13"	25.0'	51.66'

Torrance Bl  
Widening Plans  
(1986)





Director/City Engineer's February 15 memorandum, with attachment, regarding an analysis of the bids received on February 19;

SCHOOL 1101-4  
APPROVED PLACING CROSSING GUARD AT PLANT/RINDGE,  
W/CROSSWALK ON NORTH SIDE OF INTERSECTION

approved: (1) placing crossing guard at Plant Avenue and Rindge Lane, and (2) adding school crosswalk on north side of the intersection, pursuant to the Public Works Director/City Engineer's February 24 memorandum, with attachment;

PARKING & TRAFFIC 1101-1-1  
APPROVED PLACING STOP SIGN  
ON OPAL (WESTBOUND) AT IRENA

Council approved stop  
sign for westbound  
Opal in 1988

approved placing a stop sign for westbound traffic on Opal Street at Irena Avenue, pursuant to the Public Works Director/City Engineer's February 24 memorandum, with attachment;

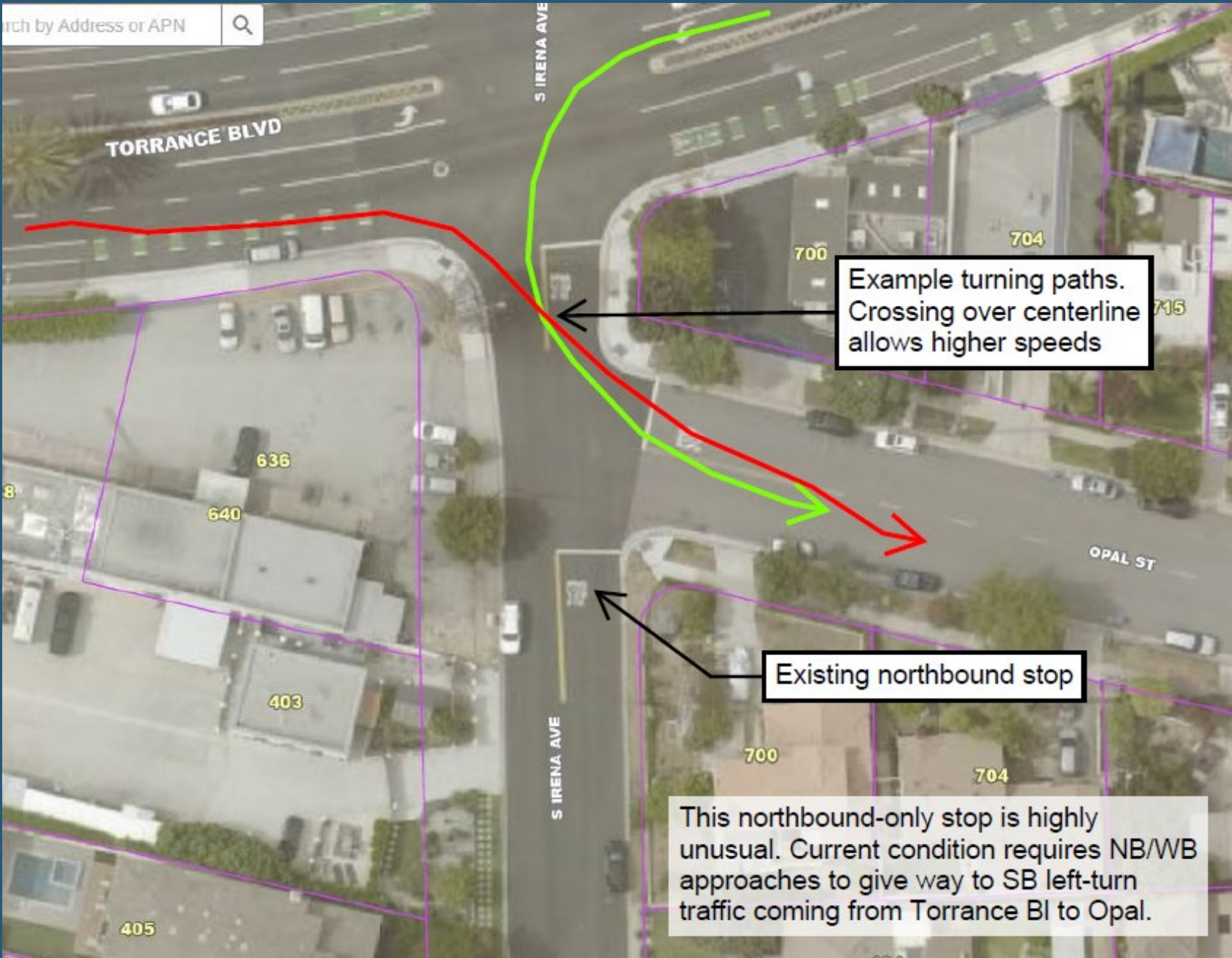
STREET VAIL 1101-1-1  
FILED/REFERRED LETTERS FROM RESI-  
DENTS RE TRAFFIC MODIFICATIONS

Northbound Irena



No line of sight  
obstructions  
from Opal





### CONSTRUCTION NOTES

ALL WORK REQUIRE THE PRESENCE OF THE CITY TRAFFIC ENGINEER.



### DETAIL A - TEMPORARY SIGN

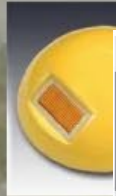
INSTALL EACH SIGN ON BARRICADES WITH FLAGS AT THE THREE (3) LOCATIONS SHOWN



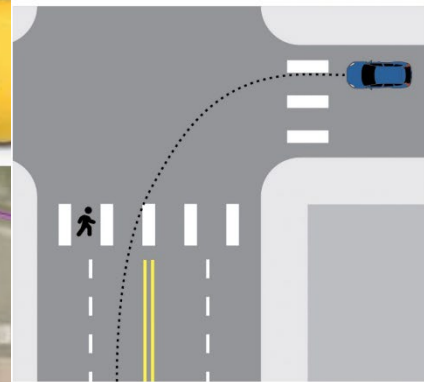
INSTALL TEMPORARY SIGN PER DETAIL A



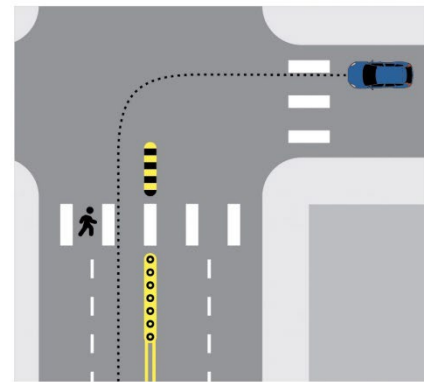
15.0'. INSTALL SIX (6) - 8" DIA YELLOW RAISED PAVEMENT MARKERS AT 3 FEET ON CENTER



21.0'. INSTALL EIGHT (8) - 8" DIA YELLOW RAISED PAVEMENT MARKERS AT 3 FEET ON CENTER



Before centerline hardening



After centerline hardening



636 INSTALL LOW PROFILE SPEED BUMP TO REDUCE TURN SPEEDS

EXISTING LIMIT LINE, STOP PAVEMENT MARKING, AND TWO DIRECTION STRIPING REMOVED BY PCI

INSTALL TEMPORARY SIGN PER DETAIL A

REMOVE EXISTING STOP SIGN AND POST

19.0' FROM CURB FACE

INSTALL TEMPORARY SIGN PER DETAIL A

±17.8'

39.0'

TORRANCE BLVD

S IRENA AVE

OPAL ST

700

700

403