

Default CVC 22500 (20 Feet)



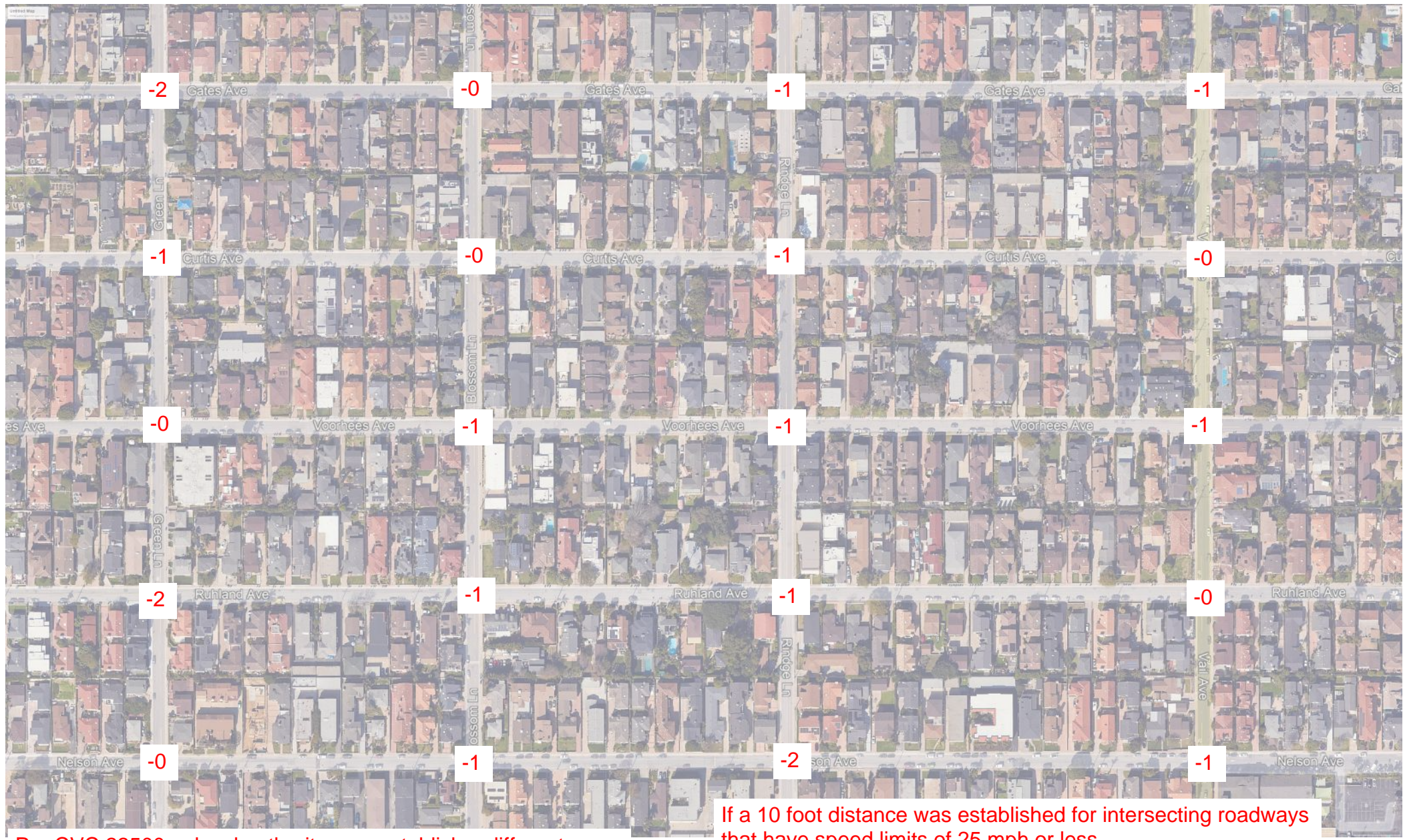
Per CVC 22500, no parking 20 feet on approach of any marked/unmarked crosswalk. Does not require red curb or signage

Two-way streets have parking on one side, one-way streets have parking on both sides. Rindge has no parking.

Number of spaces approximated based on typical vehicle length. Actual spaces varies greatly due to vehicle length and parking behaviors.

At 20 typical intersections in District 5, these 27 spaces are considered no parking zones per CVC 22500. No red curb is required. City does not plan to install red curb at every intersection.

If City Adopts a Different Distance...10 foot scenario



If a 10 foot distance was established for intersecting roadways that have speed limits of 25 mph or less.

Per CVC 22500, a local authority may establish a different daylighting distance if both conditions are met:

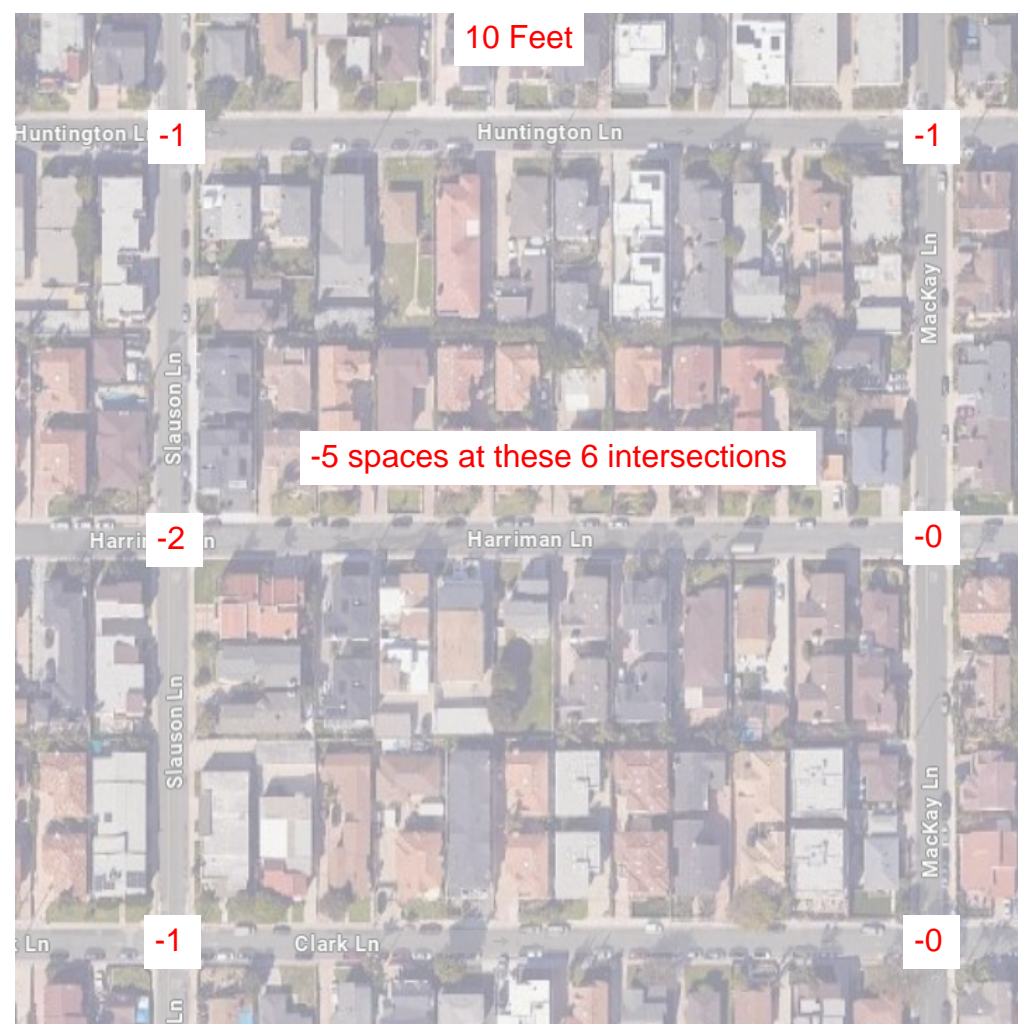
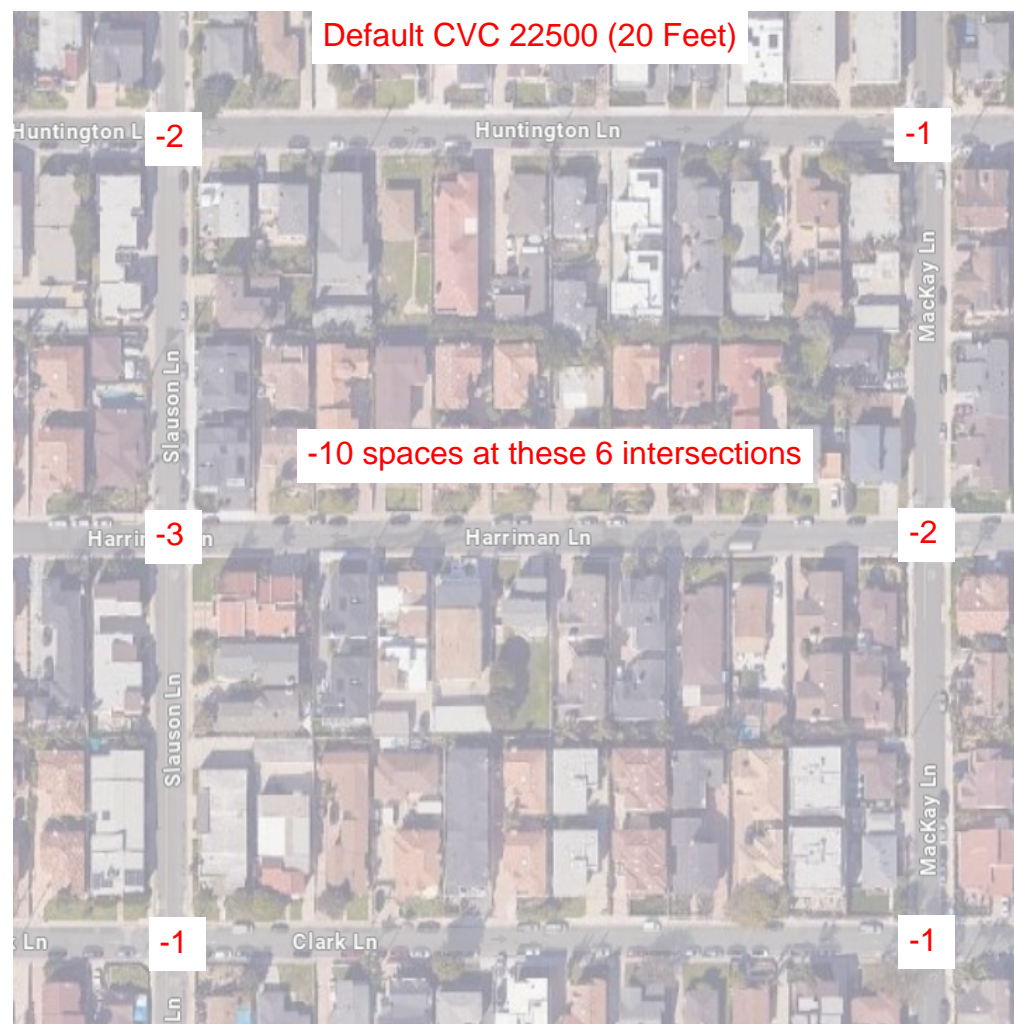
1. Local authority establishes the different distance by ordinance that includes a finding that the different distance is justified by established traffic safety standards.
2. A local authority has marked the different distance at the intersection using paint or a sign.

This recaptures 11 spaces (-16 instead of -27), less than half. However, this requires RBPW to paint and maintain red curb at each location (160 linear feet total).

Legal defensibility of such distances less than 20 feet per CVC 22500 will be challenging.

Default CVC 22500 (20 Feet)

10 Feet



Typical intersections in Districts 3 and 4, similar to District 5



Typical intersection in District 2



T intersection in District 1 along Avenues

Driveways in close proximity to intersections means spaces are lost even if the daylighting zone is reduced. A reduced daylighting zone requires red curb to be installed. Defaulting to CVC 22500 does not require red curb.