

Regional Map - NTS

GUIDING PRINCIPLES

- Create a Mobility Hub, incorporating a passive pause point destination.
- Incorporate endangered El Segundo Blue Butterfly habitat and interpretive features.
- Create a civic space of gathering/storytelling through public art.
- Focus people places along the Grant Ave to encourage good Crime Prevention Through Environmental Design (CPTED) best practices.
- Screen the view to the Cemetery while also preserving the view to the Cemetery Signage.

MOBILITY HUB

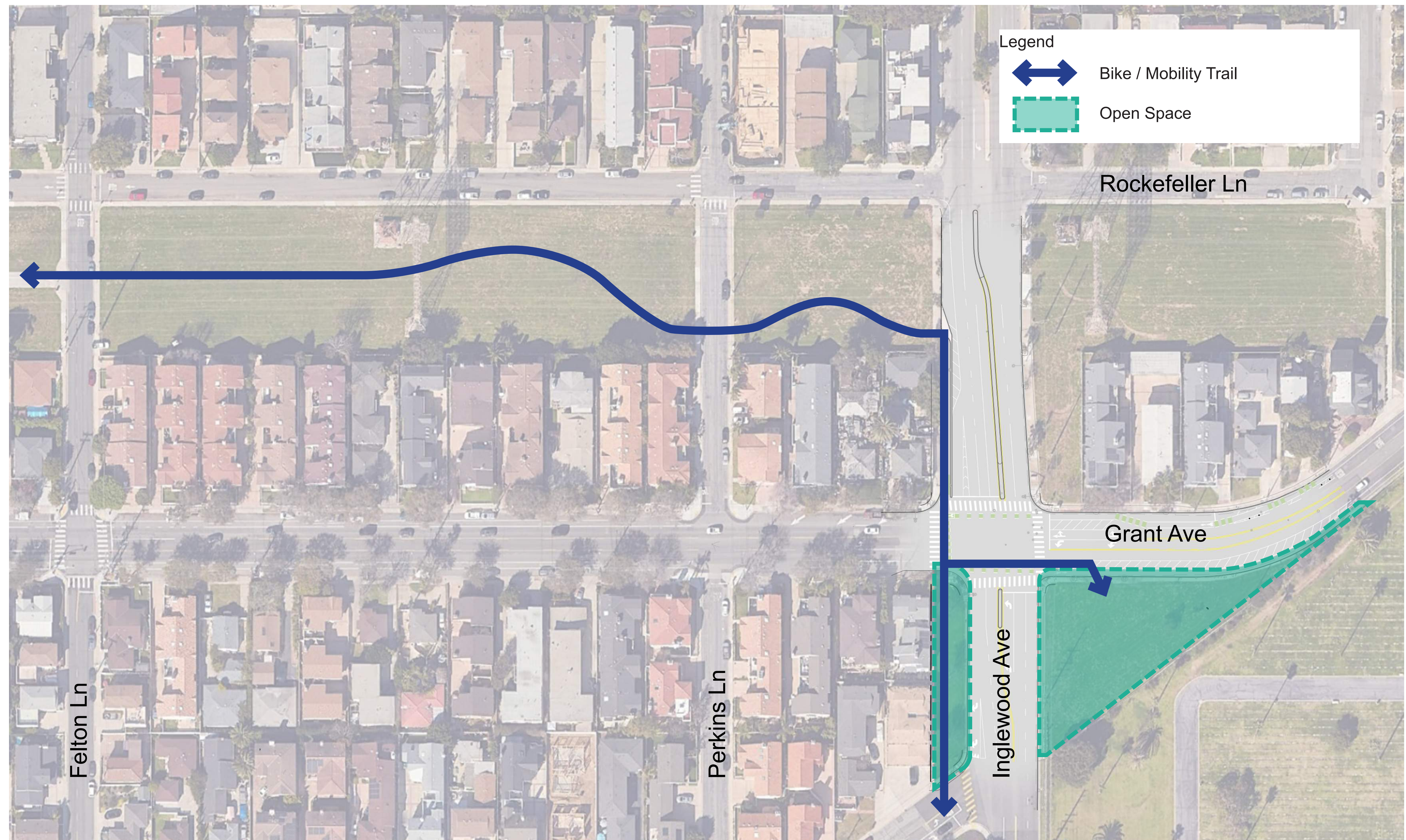
- Prioritize opportunities for mobility based access to site.
- Encourage bicycle traffic to enter the park.
- Incorporate bicycle repair station. Encourage workshop destination for regular bicycle community.
- Provide temporary bike racks for short term rest.

NATURE

- Celebrate the endangered El Segundo Blue Butterfly and create habitats that support their proliferation in the area.
- Opportunity to use planting to screen cemetery.
- Create a natural barricade and boulders from west streetscape.

CIVIC

- Provide areas for mobile vendors to activate site with local business.
- Create passive rest areas and encourage short exploration point for cyclists.
- Park to serve as a community gateway and passive meet up point for cyclists.
- Provide interpretive art elements to connect users to the site.

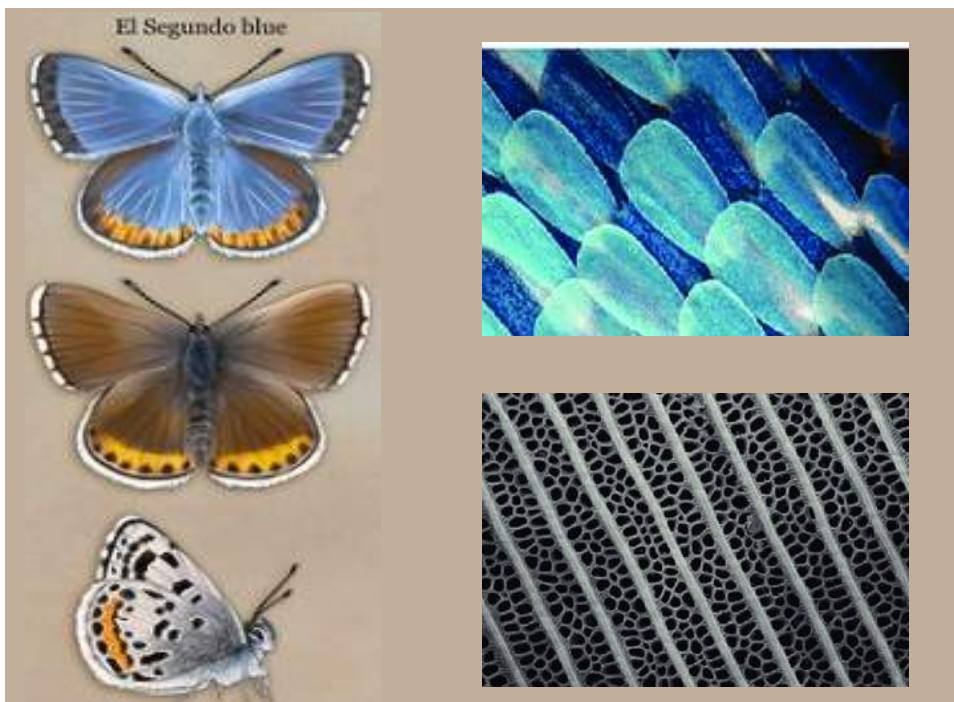




El Segundo Blue Butterfly



Bike Repair Station



Design Inspiration



Light Overhead Structure



Interpretive Panels



Planting Strategies



Pedestrian Bridge



Arroyo w/ Cobble Bioswale

Design Statement

The landscape vision for this open space is crafted through the concept of wind and mobility. You feel the wind as you cycle to the site as the prevailing westerly winds sweep through the open space. The wind carries the endangered El Segundo Blue Butterfly to this site and the proposed plant massings provide new habitat areas for the butterfly.

The open space features are inspired by the patterns of the Blue Butterfly wings. The central planting areas are an abstraction of the rhythmic spots located on the butterfly wings. This concept also proposes a free standing privacy wall with mounding to screen the cemetery along the southern edge of the site.

The interpretive panels within the main plaza tell the story of the El Segundo Blue Butterfly, it's unique connection to this region, life cycle, and it's native habitats.

TREES



Arbutus 'Marina' /
Marina Strawberry Tree



Tabebuia impetiginosa /
Pink Trumpet Tree



Acacia podalyriifolia /
Blue Pearl Acacia



Ulmus parvifolia /
Chinese Elm



Magnolia grandiflora 'Samuel Sommer' /
Samuel Sommer Magnolia

SHRUBS



Agave attenuata /
Foxtail Agave



Abutilon palmeri /
Indian mallow



Rhamnus californica 'Eve Case' /
Eve Case California Coffeeberry



Salvia leucophylla 'Point Sal Spreader' /
Point Sal Spreader Purple Sage



Zamia furfuracea /
Cardboard Palm

GROUNDCOVER



Calandrinia spectabilis /
Pink Calandrinia



Carex preegracilis /
California Field Sedge



Senecio mandraliscae 'Blue Chalk Sticks' /
Blue Fingers



Tagetes lemmonii /
Tagetes Copper Canyon



Eriogonum parvifolium /
Dune Buckwheat

AROYO SHUBS



Carex spissa /
San Diego Sedge



Asclepias subulata /
Rush Milkweed



Muhlenbergia dubia /
Pine Muhly

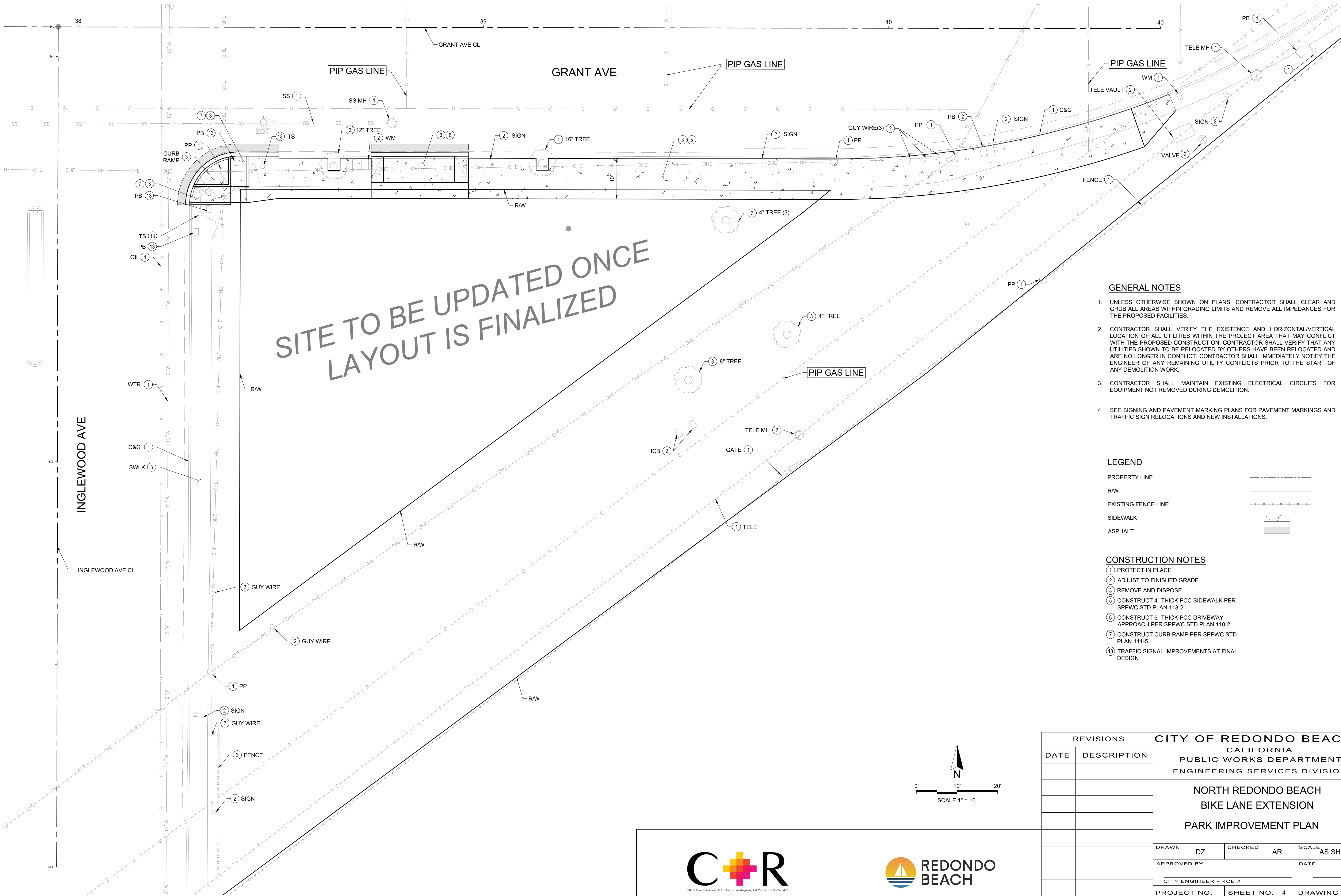


Iva hayesiana /
San Diego marsh elder



Mixed Boulders and Cobble of the Arroyo

P:\Projects\2024\01\North Redondo Beach Bike Lane\CAD\Drawings\DWG_Plan\DWG_Plan.dwg Plot Date: 11/20/2024 4:21:11 PM



GENERAL NOTES

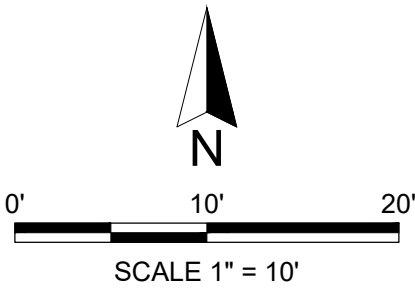
- UNLESS OTHERWISE SHOWN ON PLANS, CONTRACTOR SHALL CLEAR AND GRUB ALL AREAS WITHIN GRADING LIMITS AND REMOVE ALL IMPEDANCES FOR THE PROPOSED FACILITIES.
- CONTRACTOR SHALL VERIFY THE EXISTENCE AND HORIZONTAL/VERTICAL LOCATION OF ALL UTILITIES WITHIN THE PROJECT AREA THAT MAY CONFLICT WITH THE PROPOSED CONSTRUCTION. CONTRACTOR SHALL VERIFY THAT ANY UTILITIES SHOWN TO BE RELOCATED BY OTHERS HAVE BEEN RELOCATED AND ARE NO LONGER IN CONFLICT. CONTRACTOR SHALL IMMEDIATELY NOTIFY THE ENGINEER OF ANY REMAINING UTILITY CONFLICTS PRIOR TO THE START OF ANY DEMOLITION WORK.
- CONTRACTOR SHALL MAINTAIN EXISTING ELECTRICAL CIRCUITS FOR EQUIPMENT NOT REMOVED DURING DEMOLITION.
- SEE SIGNING AND PAVEMENT MARKING PLANS FOR PAVEMENT MARKINGS AND TRAFFIC SIGN RELOCATIONS AND NEW INSTALLATIONS.

LEGEND

PROPERTY LINE	
R/W	
EXISTING FENCE LINE	
SIDEWALK	
ASPHALT	

CONSTRUCTION NOTES

- PROTECT IN PLACE
- ADJUST TO FINISHED GRADE
- REMOVE AND DISPOSE
- CONSTRUCT 4" THICK PCC SIDEWALK PER SPPWC STD PLAN 113-2
- CONSTRUCT 6" THICK PCC DRIVEWAY APPROACH PER SPPWC STD PLAN 110-2
- CONSTRUCT CURB RAMP PER SPPWC STD PLAN 111-5
- TRAFFIC SIGNAL IMPROVEMENTS AT FINAL DESIGN



REVISIONS			CITY OF REDONDO BEACH CALIFORNIA PUBLIC WORKS DEPARTMENT ENGINEERING SERVICES DIVISION		
DATE	DESCRIPTION				
			NORTH REDONDO BEACH BIKE LANE EXTENSION PARK IMPROVEMENT PLAN		
			DRAWN DZ	CHECKED AR	SCALE AS SHOWN
			APPROVED BY		DATE
			CITY ENGINEER - RCE #		
			PROJECT NO. XXXXX	SHEET NO. 4 OF 6 SHEETS	DRAWING NO.



PRELIMINARY DESIGN

1. UNLESS OTHERWISE SHOWN ON PLANS, CONTRACTOR SHALL CLEAR AND GRUB ALL AREAS WITHIN GRADING LIMITS AND REMOVE ALL IMPEDANCES FOR THE PROPOSED FACILITIES.
2. CONTRACTOR SHALL VERIFY THE EXISTENCE AND HORIZONTAL/VERTICAL LOCATION OF ALL UTILITIES WITHIN THE PROJECT AREA THAT MAY CONFLICT WITH THE PROPOSED CONSTRUCTION. CONTRACTOR SHALL VERIFY THAT ANY UTILITIES SHOWN TO BE RELOCATED BY OTHERS HAVE BEEN RELOCATED AND ARE NO LONGER IN CONFLICT. CONTRACTOR SHALL IMMEDIATELY NOTIFY THE ENGINEER OF ANY REMAINING UTILITY CONFLICTS PRIOR TO THE START OF ANY DEMOLITION WORK.
3. CONTRACTOR SHALL MAINTAIN EXISTING ELECTRICAL CIRCUITS FOR EQUIPMENT NOT REMOVED DURING DEMOLITION.
4. SEE SIGNING AND PAVEMENT MARKING PLANS FOR PAVEMENT MARKINGS AND TRAFFIC SIGN RELOCATIONS AND NEW INSTALLATIONS.

LANDSCAPING

- ① PROTECT IN PLACE
- ③ REMOVE AND DISPOSE
- ⑦ CONSTRUCT CURB RAMP PER SPPWC STD PLAN 111-5
- ⑧ CONSTRUCT BIKE MEDIAN PER DETAIL X ON SHEET X
- ⑩ REMOVE AND INSTALL TYPE 1-A TRAFFIC SIGNAL POLE
- ⑪ CONSTRUCT 4" THICK PCC DRIVEWAY APPROACH PER SPPWC STD PLAN 110-2
- ⑬ TRAFFIC SIGNAL IMPROVEMENTS AT FINAL DESIGN
- ⑭ CONTRACTOR TO RELOCATE SURVEY MONUMENT



REVISIONS		CITY OF REDONDO BEACH CALIFORNIA PUBLIC WORKS DEPARTMENT ENGINEERING SERVICES DIVISION NORTH REDONDO BEACH BIKE LANE EXTENSION STREET IMPROVEMENT PLAN		
DATE	DESCRIPTION			
		DRAWN DZ	CHECKED AR	SCALE AS SHOWN
		APPROVED BY _____		DATE _____
		CITY ENGINEER - RCE # _____		_____
		PROJECT NO. XXXXX	SHEET NO. <u> 5 </u> OF <u> 6 </u> SHEETS	DRAWING NO. _____

