



**LOS ANGELES COUNTY
SANITATION DISTRICTS**

Converting Waste Into Resources

Sanitation Districts Overview

City of Redondo Beach

Danielle “Danni” Maurizio
Supervising Engineer, Solid Waste
June 23, 2025



OUR SERVICE AREA

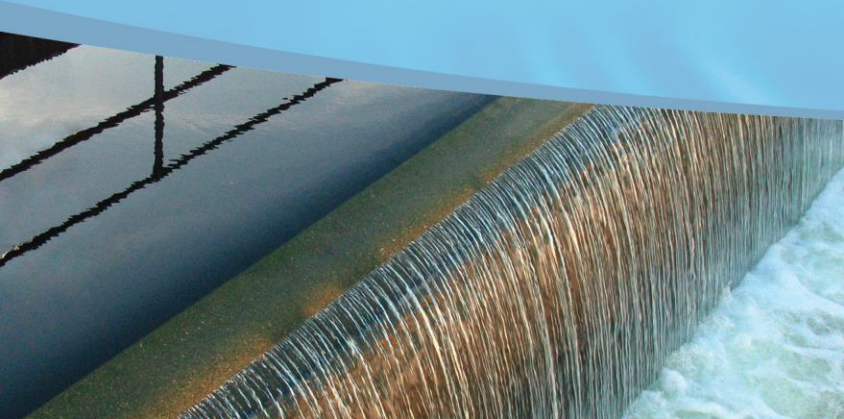


**LOS ANGELES COUNTY
SANITATION DISTRICTS**

Converting Waste Into Resources

OUR MISSION

To protect public health and the environment through innovative and cost-effective wastewater and solid waste management and, in doing so, convert waste into resources such as recycled water, energy, and recycled materials.



WATER RECYCLING

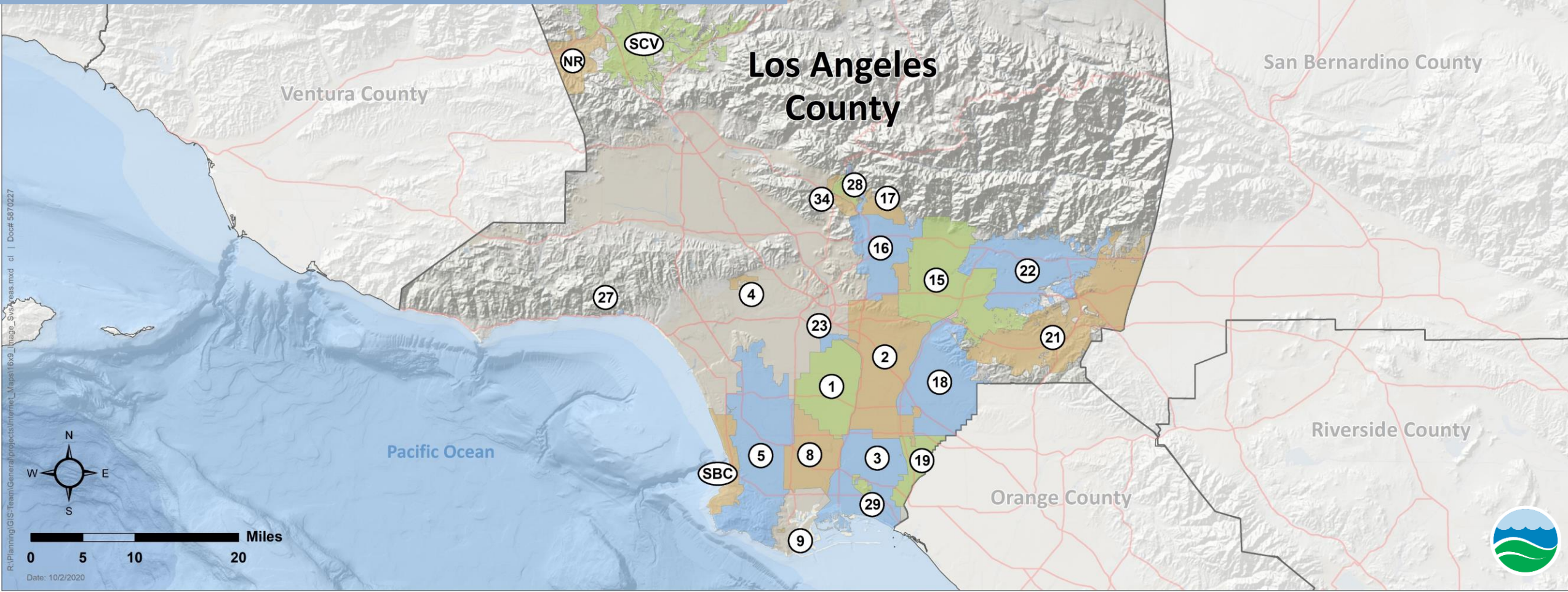


GREEN ENERGY



MATERIALS RECYCLING

We are a confederation of 24 independent special districts, providing wastewater and solid waste services.



We serve 5.6 million people.



*We collect and treat sewage
from 5.6 million people*

GOVERNANCE

24 special districts with one staff

SERVICE AREA

78 cities & unincorporated county
824 square miles

INFRASTRUCTURE

1,400 miles of sewers
11 wastewater treatment plants
Ocean outfall system



**LOS ANGELES COUNTY
SANITATION DISTRICTS**
Converting Waste Into Resources

Our 11 plants treat about 400 mgd.



What is Wastewater?



How does sewage get to a treatment plant?



We maintain 1,400 miles of trunk sewers.



Sewage enters the plant about 30 ft. below ground.



Primary treatment is sedimentation.



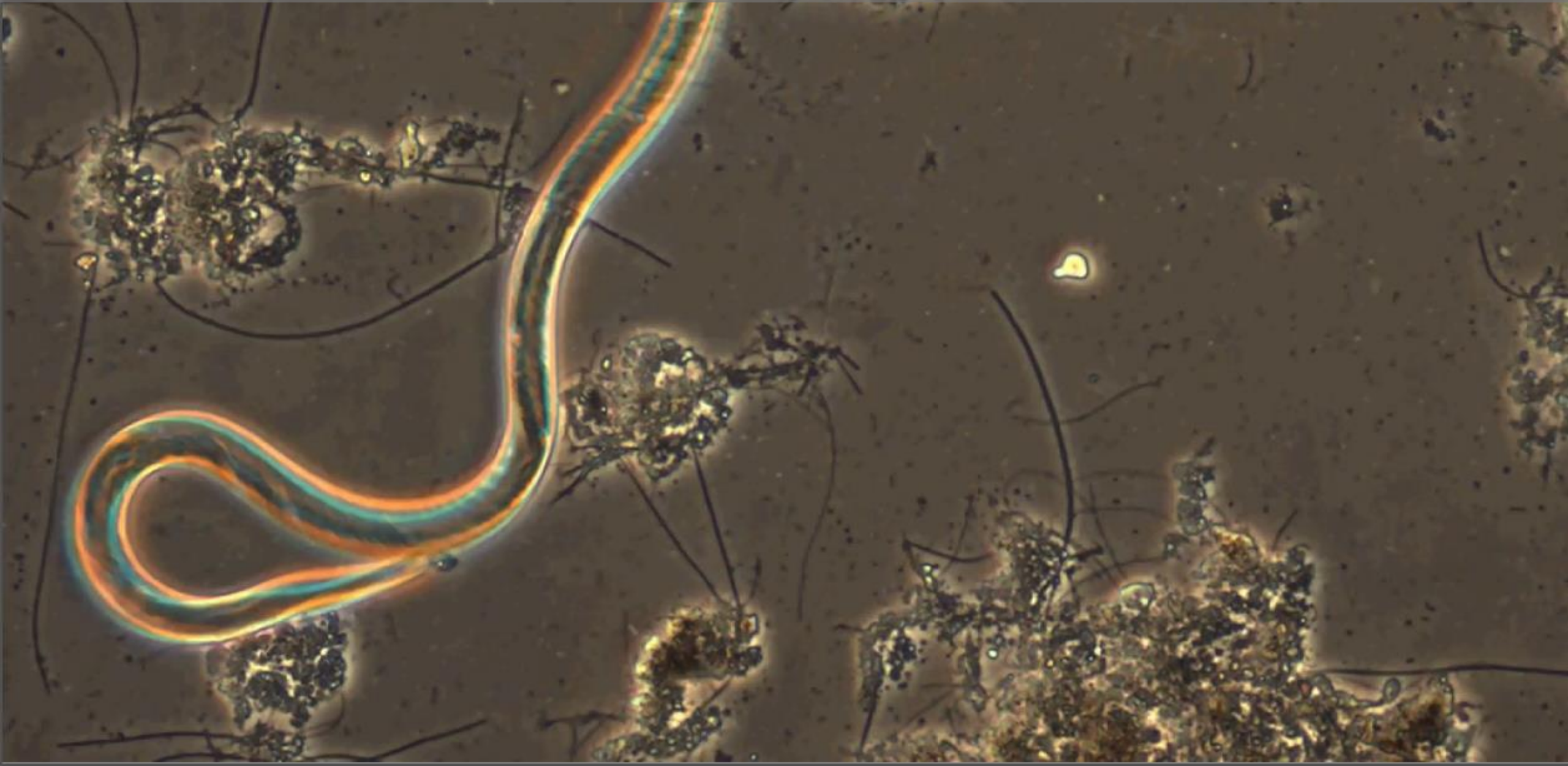
Secondary treatment is a biological process.



Aeration is the key to secondary treatment.



Microorganisms are grown in the aerated tanks.



The microorganisms are then settled out.



Secondary effluent is skimmed off with weirs.



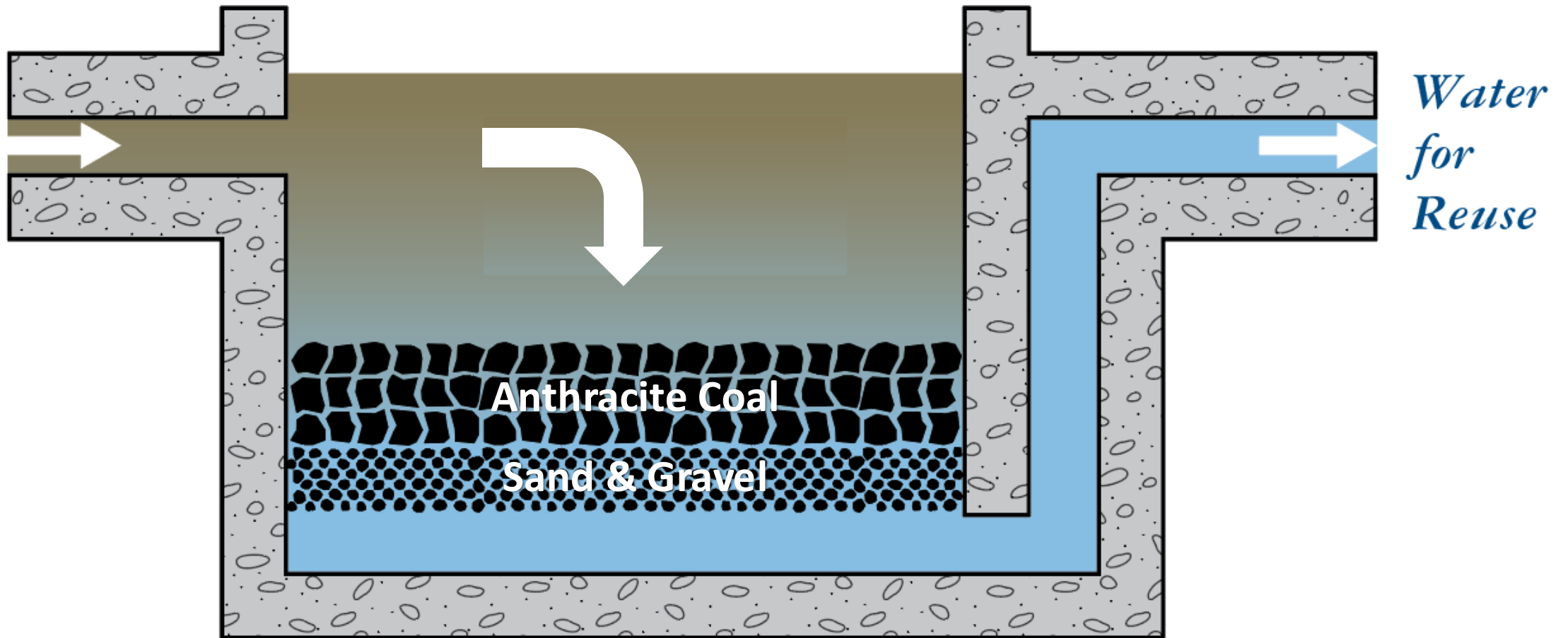
Tertiary treatment is filtration and disinfection.



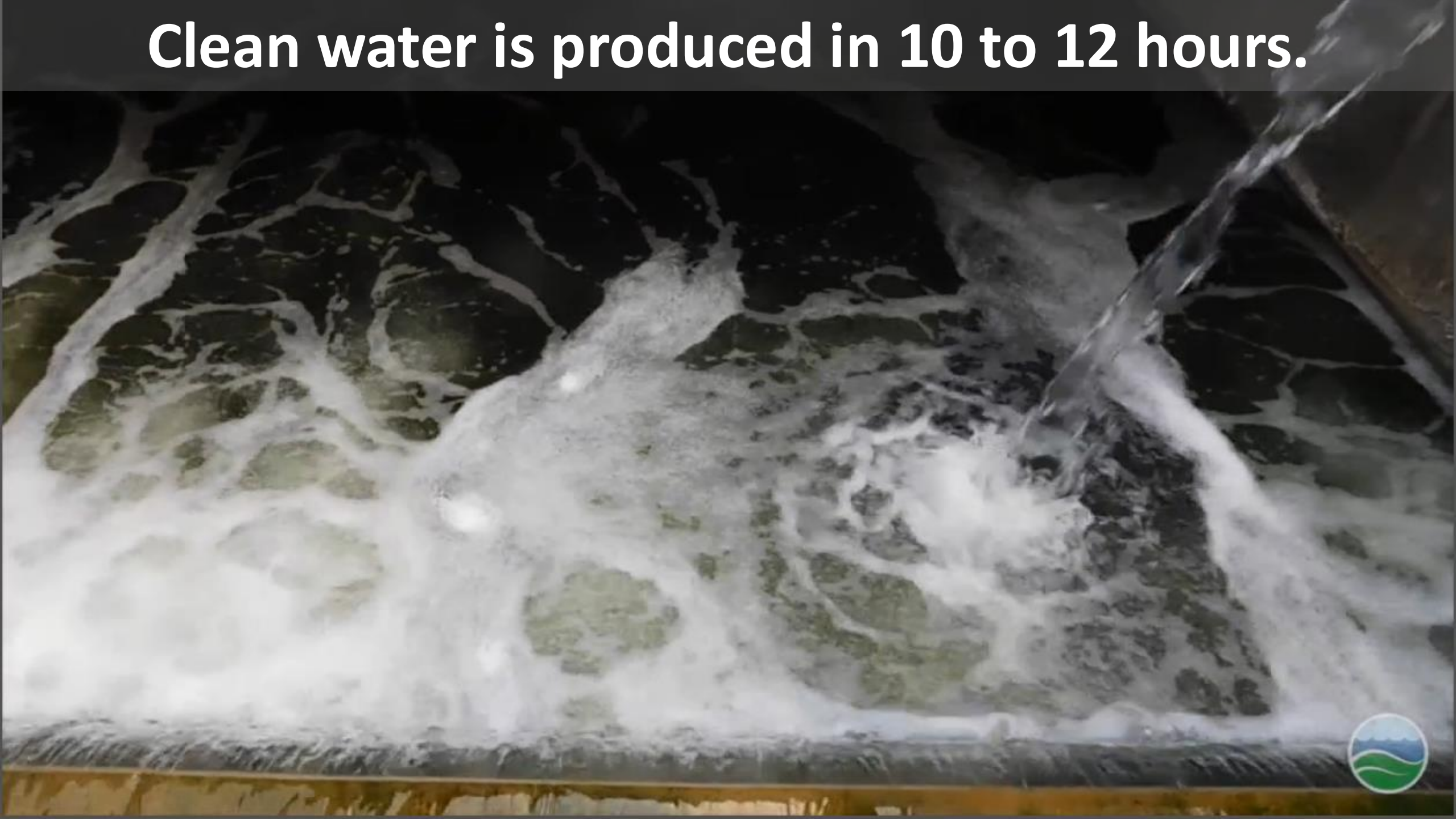
Here's a close-up of a filter.



Filters have three components.



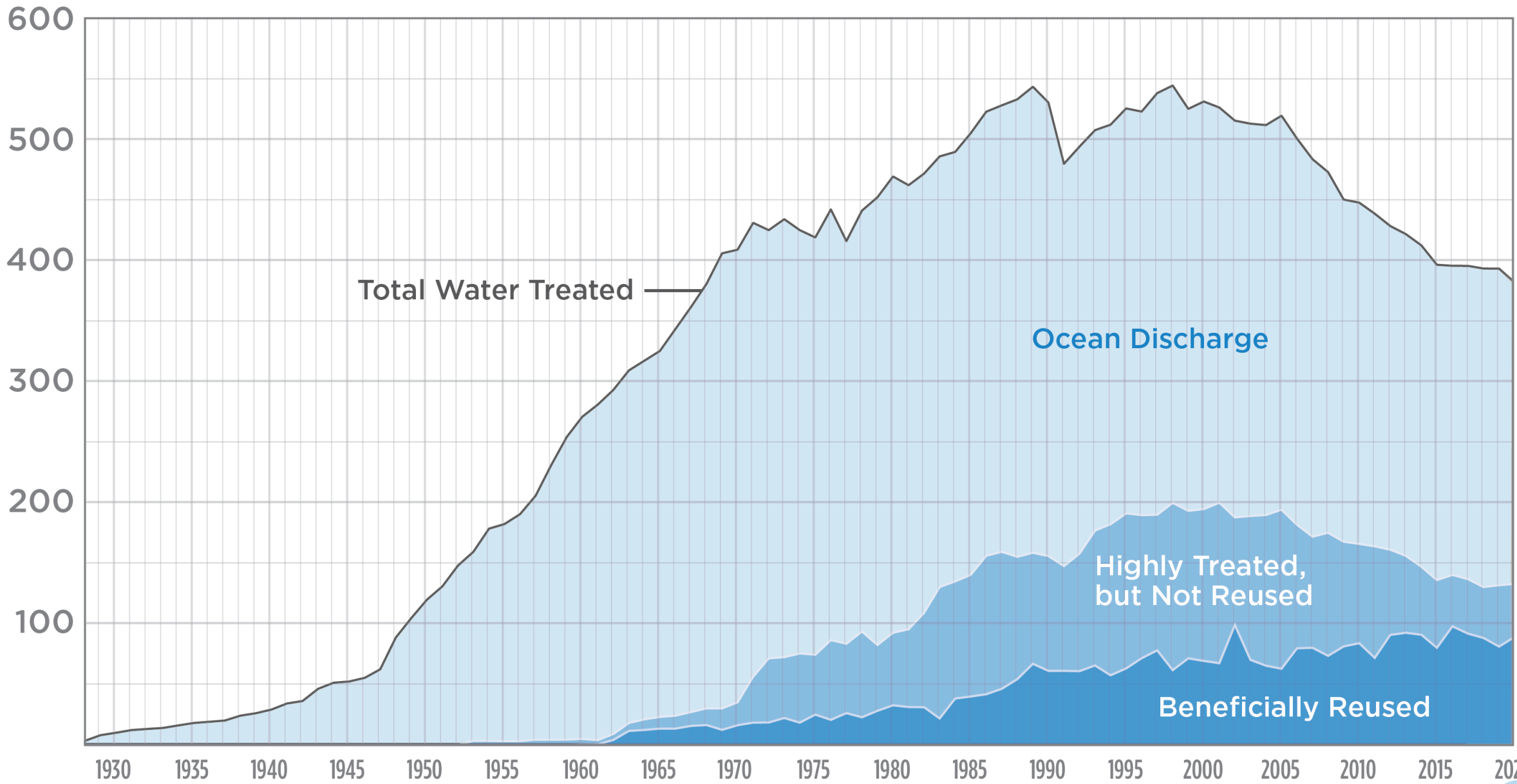
Clean water is produced in 10 to 12 hours.



Cleaned water is used for groundwater recharge.



AVERAGE MGD OVER CALENDAR YEAR



The recycled water augments local water supply.

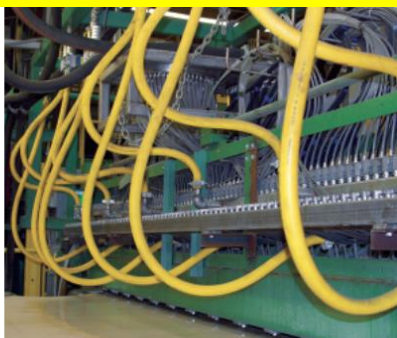


1 trillion gallons
recycled since 1962

950+
reuse sites



Agriculture



Industry



Landscaping



Groundwater



Environmental

Wasted solids are all treated at JWPCP.



Solid Waste Facilities



Operating Landfills



Scholl Canyon Landfill

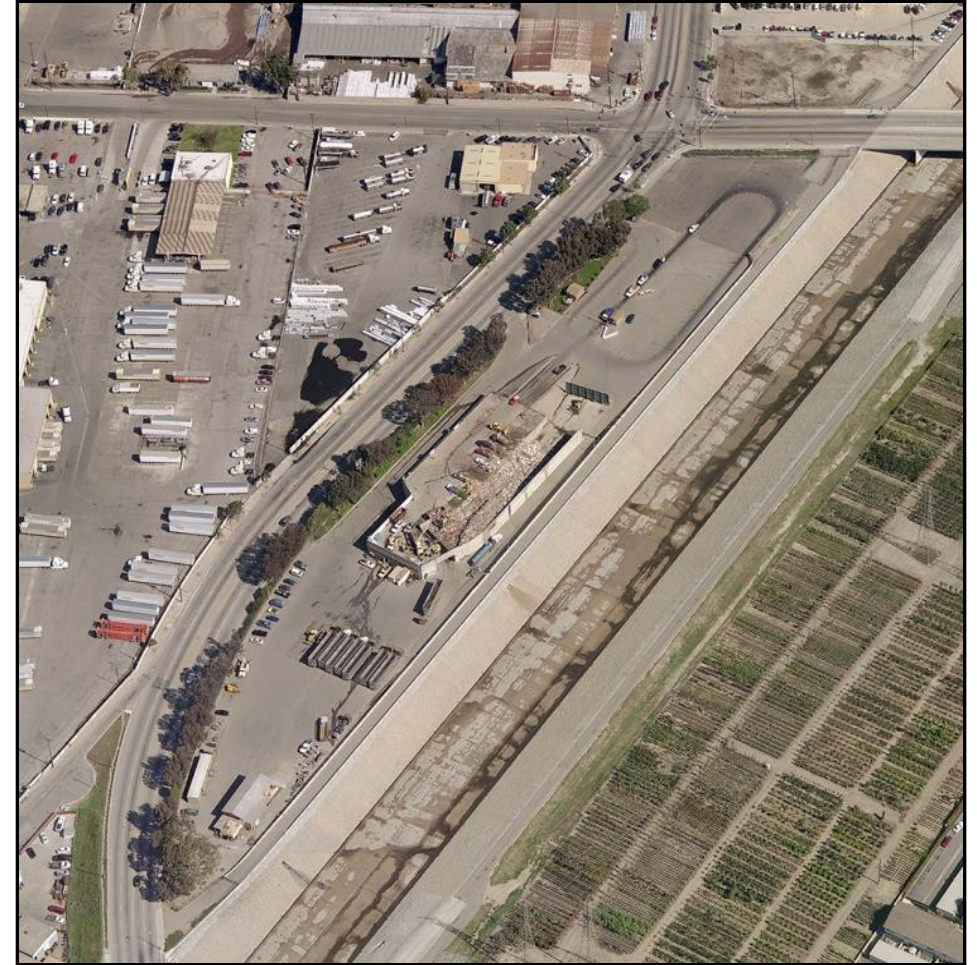
Calabasas Landfill



Materials Recovery & Transfer Stations



Puente Hills Materials Recovery Facility



South Gate Transfer Station



Puente Hills Materials Recovery Facility (PHMRF)



PHMRF Recycling Sort Line



PHMRF Food Waste Processing



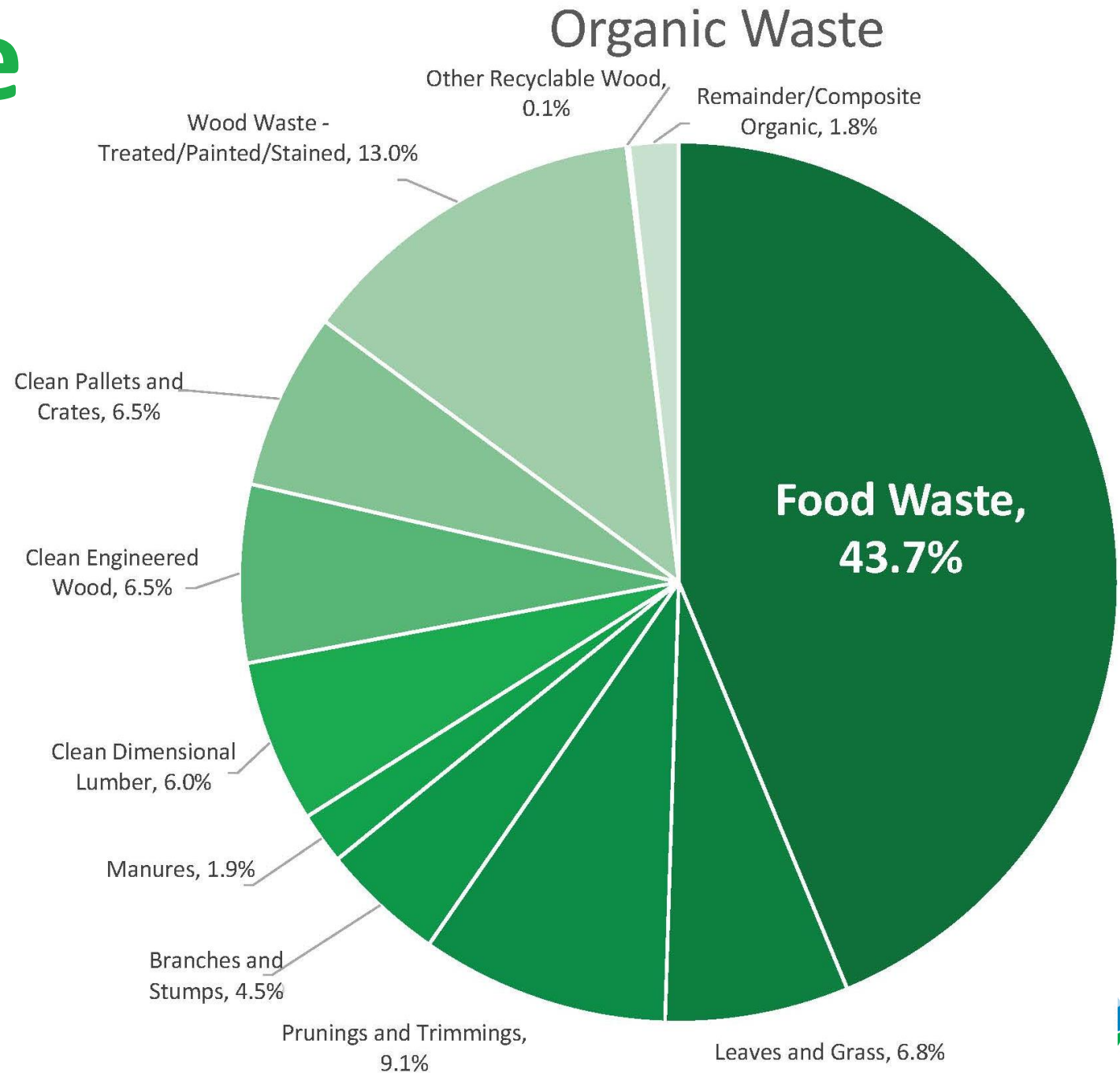


Food waste that is disposed of
in landfills can release
methane to the environment.



Food Waste

Food Waste is
the largest
portion of
organic waste.



Source: 2018 Facility-Based Characterization of
Solid Waste in California by CalRecycle

Mandates

AB 1826



- Mandatory commercial organics recycling
- Composting or anaerobic digestion if more than 2 cubic yards per week is generated

SB 1383

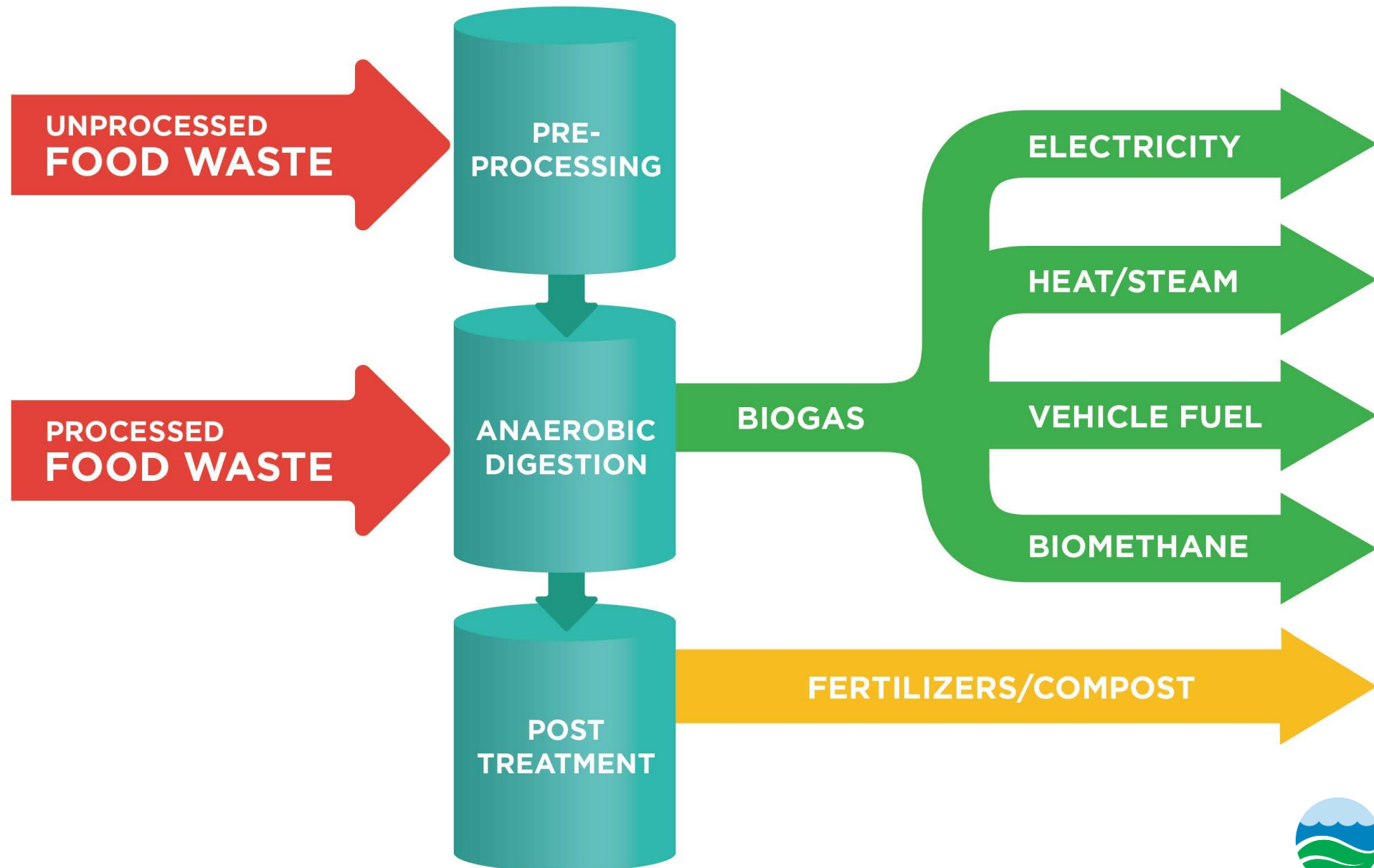


- 50% reduction in landfilled organic waste by 2020
- 75% reduction in landfilled organic waste by 2025

Compared to 2014 levels



Food Waste Process



Food waste and wastewater solids are digested.



*24 Digesters
Kept at 96 °F for 15-16 Days*



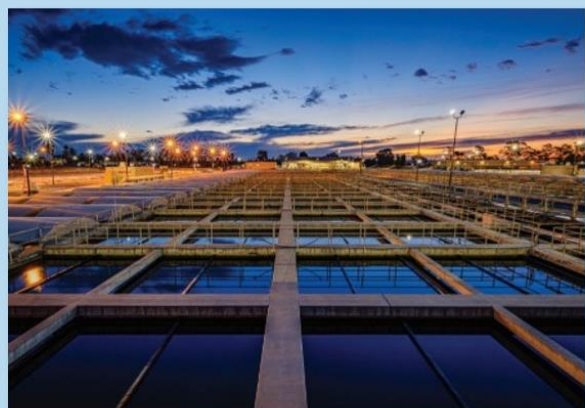
Steam generators are used to generate power.



Most of biosolids is composted with ag waste.



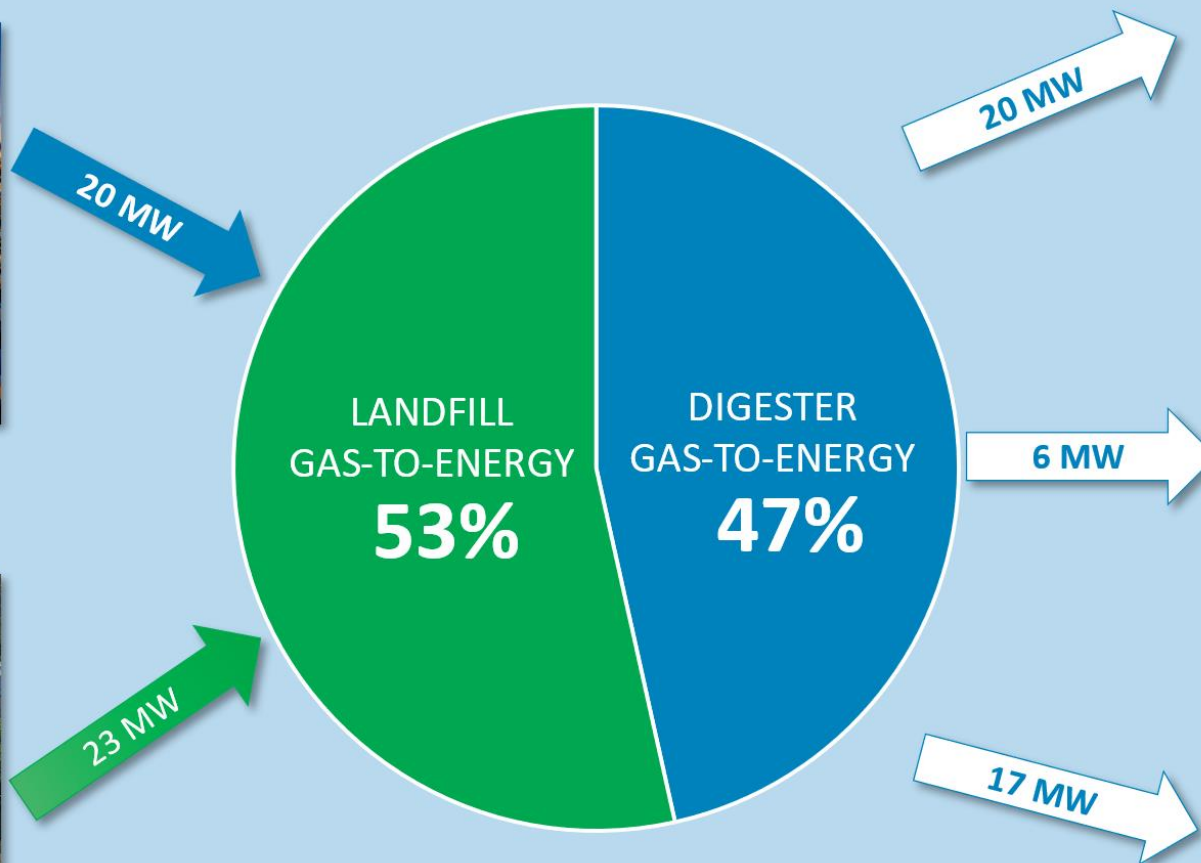
Green Energy Production & Sales



WASTEWATER MANAGEMENT



SOLID WASTE MANAGEMENT



WARREN FACILITY



DISTRICTS FACILITIES



POWER SALES

We produce enough power
for 43,000 homes



**LOS ANGELES COUNTY
SANITATION DISTRICTS**

Converting Waste Into Resources

thank
you

For more information:

Maria Rosales

mrosales@lacsds.org or
(562) 908-4288, ext. 2311



OUR SERVICE AREA