

# **BLUE FOLDER ITEM**

*Blue folder items are additional back up material to administrative reports and/or public comments received after the printing and distribution of the agenda packet for receive and file.*

## **CITY COUNCIL MEETING JUNE 17, 2025**

### **J.1 PUBLIC PARTICIPATION ON NON-AGENDA ITEMS**

- **PUBLIC COMMUNICATIONS**

**From:** [Mark Nelson \(Home Gmail\)](#)  
**To:** [CityClerk](#); [Chadwick B. Castle](#); [Brad Waller](#); [Paige Kaluderovic](#); [James Light](#); [Scott Behrendt](#); [Zein Obagi](#)  
**Subject:** Public Comment - 6/17 RBCC Meeting - Blue Folder - Non-Agenda Items "J"  
**Date:** Tuesday, June 17, 2025 1:16:27 PM  
**Attachments:** [PSC presentation on BCHD-Prospect Frontage Intersection Safety 6-15-25 0045.pdf](#)

---

**CAUTION: Email is from an external source; Stop, Look, and Think before opening attachments or links.**

Dear Mayor and Council:

This email and attached package was provided in comment to the PSC last night at their meeting. I plan to discuss it during the Non-Agenda comments and this provides full backup.

It primarily addresses the Bus Stop on the Prospect Frontage road at the BCHD intersection and our concerns that residents do not have visibility into the bus stop at all times due to parked cargo vans, SUVs and other vehicles. According to a University of California paper, clear visibility from surrounding home and businesses is a key element to bus stop safety and avoiding situations of the unhoused, urination, defecation and trash as Dr. Lesser described to the Council on 5/6/25.

Thank you.

----- Forwarded message -----

**From:** Mark Nelson (Home Gmail) <[REDACTED]>  
**Date:** Sun, Jun 15, 2025 at 12:09 PM  
**Subject:** Public Comment - 6/16 PSC Meeting - BCHD & Prospect Frontage Road Safety Issues  
**To:** Eleanor Manzano <[CityClerk@redondo.org](mailto:CityClerk@redondo.org)>, <[anneke.blair@redondo.org](mailto:anneke.blair@redondo.org)>, Jeffrey Gaul <[jeffrey.gaul@redondo.org](mailto:jeffrey.gaul@redondo.org)>, Alan Klainbaum <[alan.klainbaum@redondo.org](mailto:alan.klainbaum@redondo.org)>, Nancy Skiba <[nancy.skiba@redondo.org](mailto:nancy.skiba@redondo.org)>, Austin Carmichael <[austin.carmichael@redondo.org](mailto:austin.carmichael@redondo.org)>, [daniella.woodnicki@redondo.org](mailto:daniella.woodnicki@redondo.org) <[daniella.woodnicki@redondo.org](mailto:daniella.woodnicki@redondo.org)>, Gilbert M. Escontrias <[gilbert.escontrias@redondo.org](mailto:gilbert.escontrias@redondo.org)>, Jay Tsao <[jay.tsao@redondo.org](mailto:jay.tsao@redondo.org)>, Traffic Engineering <[trafficengineering@redondo.org](mailto:trafficengineering@redondo.org)>, Paige Kaluderovic <[Paige.Kaluderovic@redondo.org](mailto:Paige.Kaluderovic@redondo.org)>, James Light <[james.light@redondo.org](mailto:james.light@redondo.org)>

PSC Commissioners:

We are seeking your assistance with two unsafe issues at the intersection: **wrong-way traffic and a bus stop hidden by parked cars** that has a long history of RBPd/FD responses, mental health crises, use by the unhoused, and is in an area with child predator investigations per a prior LA County communication to RBPW. The Frontage Road is currently being rehabilitated with the support of the Mayor, our Councilmember, RBPW and review at the PWSC. We believe the broader public safety issues could also benefit from the PSC's eyes and experience.

### **WRONG WAY TRAFFIC**

The residents of the one-way segment of the Prospect Avenue Frontage Road to the south of the BCHD intersection are plagued by Wrong-Way traffic. This is the result of two primary

causes:

- 1) vehicles "cutting through the wrong-way" to avoid traffic on southbound Prospect Avenue between the intersection and Diamond St, and
- 2) vehicles executing a U-turn from northbound Prospect Avenue into the Frontage Road at the intersection and proceeding southbound illegally on the one-way north segment of the Frontage.

Wrong-way traffic poses a hazard to school children walking, biking and e-biking to RUHS and Parras; elderly and disabled using the street due to the lack of sidewalks on the east side; pedestrians; and ONCOMING legal traffic. We ask for the review of the Public Safety Commission in conjunction with the work of the PWSC and Traffic Engineering. **A few traffic signs, red curbs, pavement arrows; and some striping and traffic information road paint are an inexpensive path to a safer street.**

### **BUS STOP**

As noted above, the bus stop has an active history. It is used primarily by students, the elderly, and patients of private doctors in the 510 and 520 Prospect Medical buildings. Amongst others, the University of California System authored a report stating that visibility and public view was one of the key factors for safety at a bus stop. The neighborhood is currently blocked from view of the bus stop by parked cars and trucks. **A simple 20-foot red curb revealing the bus stop 24/7 could improve visibility and safety by bringing activity into view.**

Thank you for your review and the attached presentation attempts to further explain the situation and provides a series of graphics that we hope you will find helpful.

Mark Nelson

Property Owner on the Prospect Frontage

Advocate for the Rehabilitation of Prospect Frontage Underway by the City

**From:** [Mark Nelson \(Home Gmail\)](#)  
**To:** [CityClerk](#); [Anneke Blair](#); [Jeffrey Gaul](#); [Alan Klainbaum](#); [Nancy Skiba](#); [Austin Carmichael](#); [daniella.woodnicki@redondo.org](#); [Gilbert M. Escontrias](#); [Jay Tsao](#); [Traffic Engineering](#); [Paige Kaluderovic](#); [James Light](#)  
**Subject:** Public Comment - 6/16 PSC Meeting - BCHD & Prospect Frontage Road Safety Issues  
**Date:** Sunday, June 15, 2025 12:11:01 PM  
**Attachments:** [PSC presentation on BCHD-Prospect Frontage Intersection Safety 6-15-25 0045.pdf](#)

---

**CAUTION: Email is from an external source; Stop, Look, and Think before opening attachments or links.**

PSC Commissioners:

We are seeking your assistance with two unsafe issues at the intersection: **wrong-way traffic and a bus stop hidden by parked cars** that has a long history of RBPD/FD responses, mental health crises, use by the unhoused, and is in an area with child predator investigations per a prior LA County communication to RBPW. The Frontage Road is currently being rehabilitated with the support of the Mayor, our Councilmember, RBPW and review at the PWSC. We believe the broader public safety issues could also benefit from the PSC's eyes and experience.

### **WRONG WAY TRAFFIC**

The residents of the one-way segment of the Prospect Avenue Frontage Road to the south of the BCHD intersection are plagued by Wrong-Way traffic. This is the result of two primary causes:

- 1) vehicles "cutting through the wrong-way" to avoid traffic on southbound Prospect Avenue between the intersection and Diamond St, and
- 2) vehicles executing a U-turn from northbound Prospect Avenue into the Frontage Road at the intersection and proceeding southbound illegally on the one-way north segment of the Frontage.

Wrong-way traffic poses a hazard to school children walking, biking and e-biking to RUHS and Parras; elderly and disabled using the street due to the lack of sidewalks on the east side; pedestrians; and ONCOMING legal traffic. We ask for the review of the Public Safety Commission in conjunction with the work of the PWSC and Traffic Engineering. **A few traffic signs, red curbs, pavement arrows; and some striping and traffic information road paint are an inexpensive path to a safer street.**

### **BUS STOP**

As noted above, the bus stop has an active history. It is used primarily by students, the elderly, and patients of private doctors in the 510 and 520 Prospect Medical buildings. Amongst others, the University of California System authored a report stating that visibility and public view was one of the key factors for safety at a bus stop. The neighborhood is currently blocked from view of the bus stop by parked cars and trucks. **A simple 20-foot red curb revealing the bus stop 24/7 could improve visibility and safety by bringing activity into view.**

Thank you for your review and the attached presentation attempts to further explain the situation and provides a series of graphics that we hope you will find helpful.

Mark Nelson  
Property Owner on the Prospect Frontage

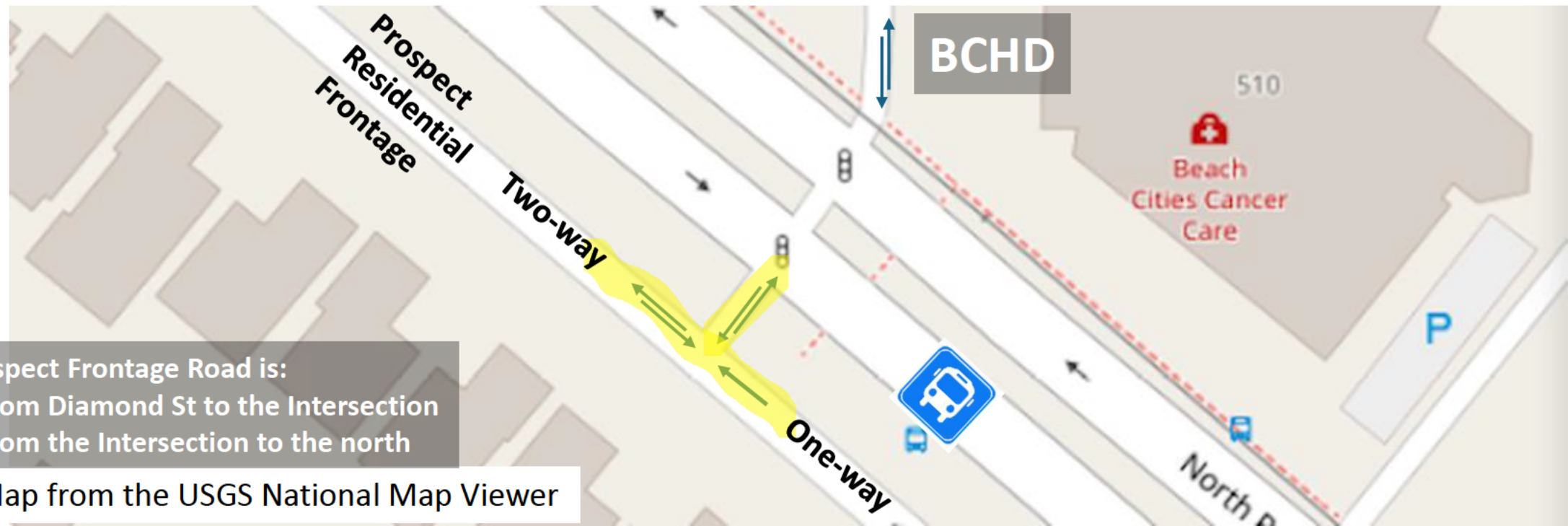
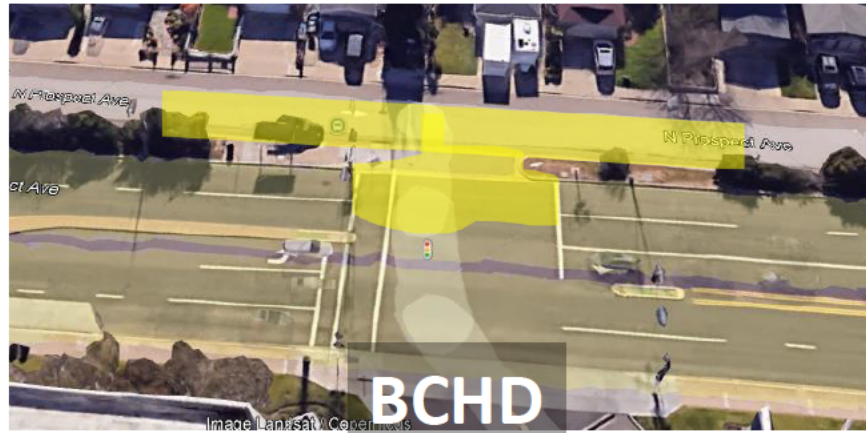


Advocate for the Rehabilitation of Prospect Frontage Underway by the City

The Neighborhood at the BCHD & Prospect  
Residential Frontage Intersection has both  
Traffic and Health/Crime Safety Issues:

Wrong-Way Traffic and a  
Bus Stop Concealed by Parked Vehicles

# This is the BCHD & Prospect Ave Residential Frontage Road Intersection It's directly across from the former South Bay Hospital and has a Bus Shelter

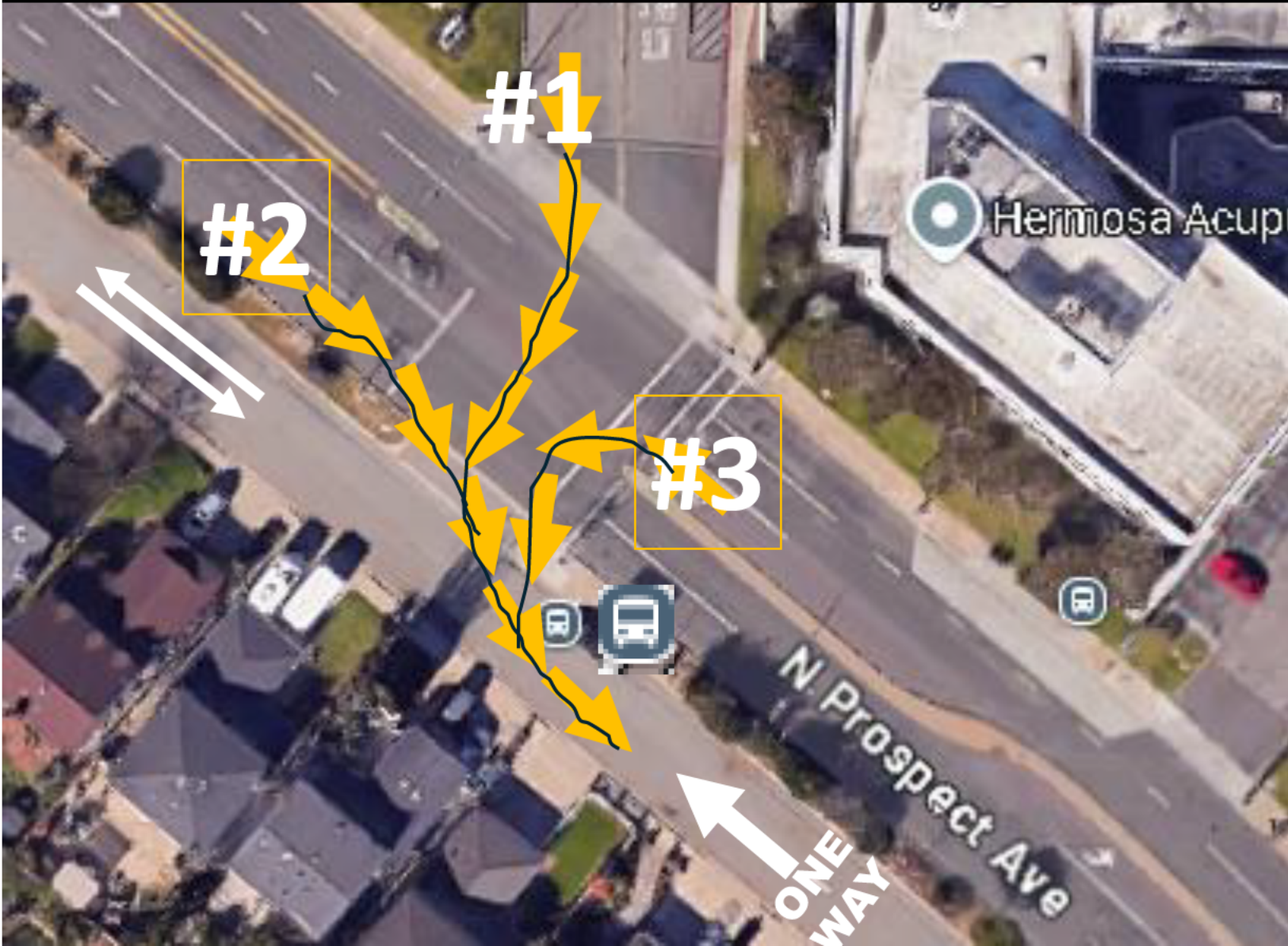


The Prospect Frontage Road is:  
1-way from Diamond St to the Intersection  
2-way from the Intersection to the north

Base Map from the USGS National Map Viewer



# **SAFETY FOCUS: WRONG-WAY TRAFFIC ON THE SOUTHBOUND ONE-WAY SEGMENT OF THE FRONTAGE**



## **Complex Roadway**

Frontage Road is One-Way from Diamond to the intersection and Two-Way from the intersection to the north end egress.

## **Safety Hazard**

Wrong-Way traffic southbound from the intersection to Diamond is a hazard for pedestrians, mobility scooters, wheelchairs, strollers, bikes, e-Bikes, residents backing out of driveways and oncoming legal traffic .

## **Traffic Origins**

#1 & #2 are primarily cut-through traffic to avoid the light at Prospect and Diamond. Traffic backs up southbound from Diamond to the Intersection.

#3 is an illegal U-Turn from Prospect Ave northbound. U-Turns are illegal on Prospect, and drivers instead turn left onto the frontage and then illegally the wrong-way down the frontage to Diamond.

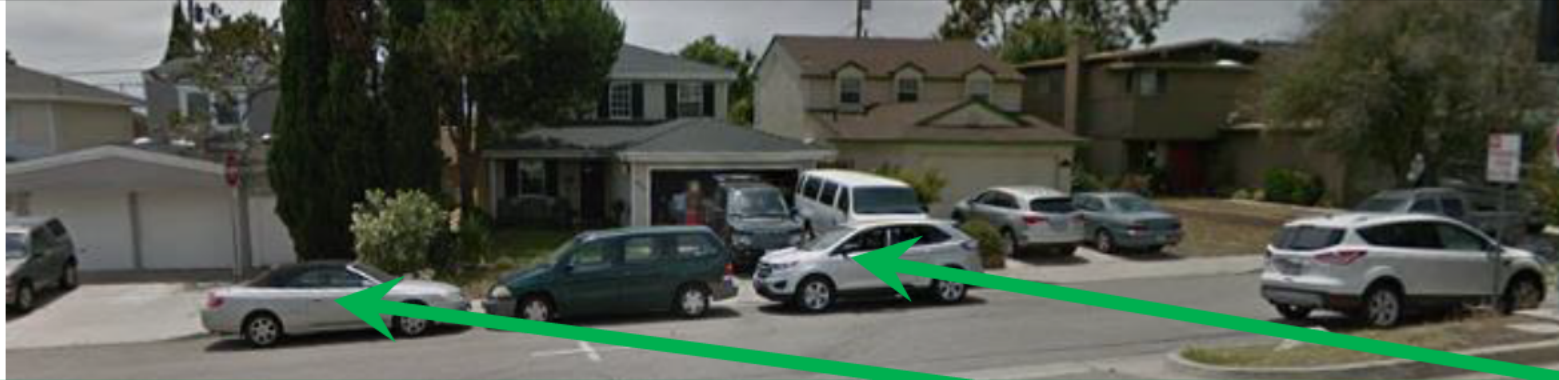


# PRIMARY CAUSES OF WRONG-WAY TRAFFIC: INEFFECTIVE SIGNS & PAVEMENT MARKINGS – PARKING IN THE INTERSECTION



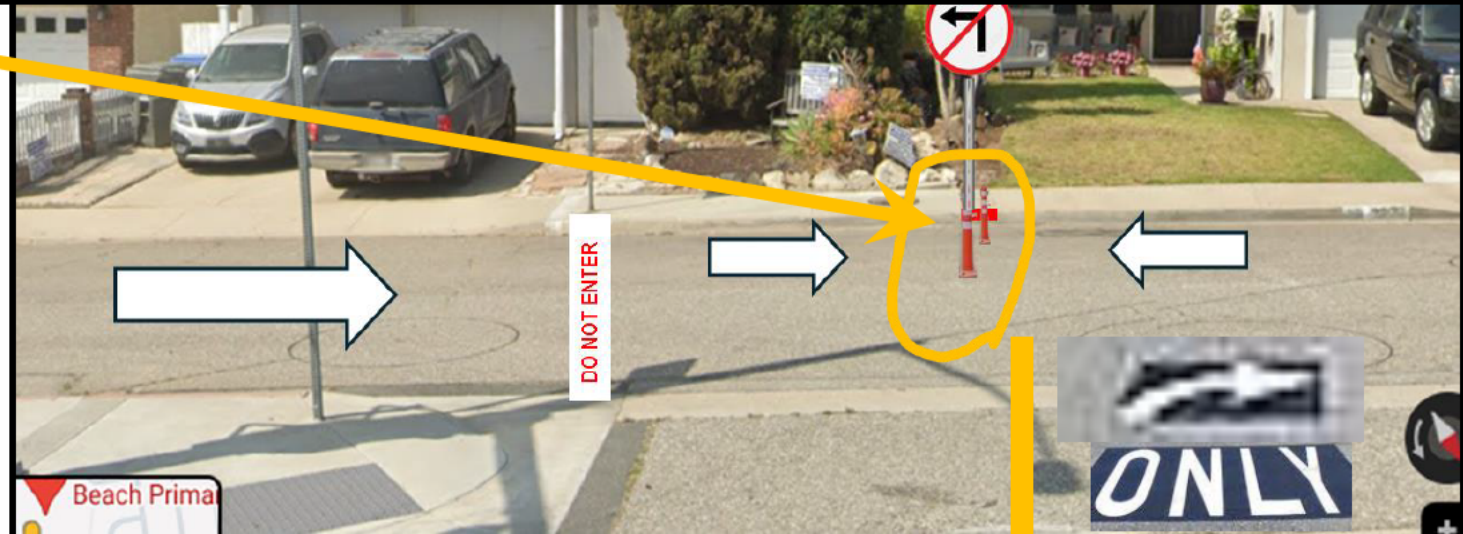
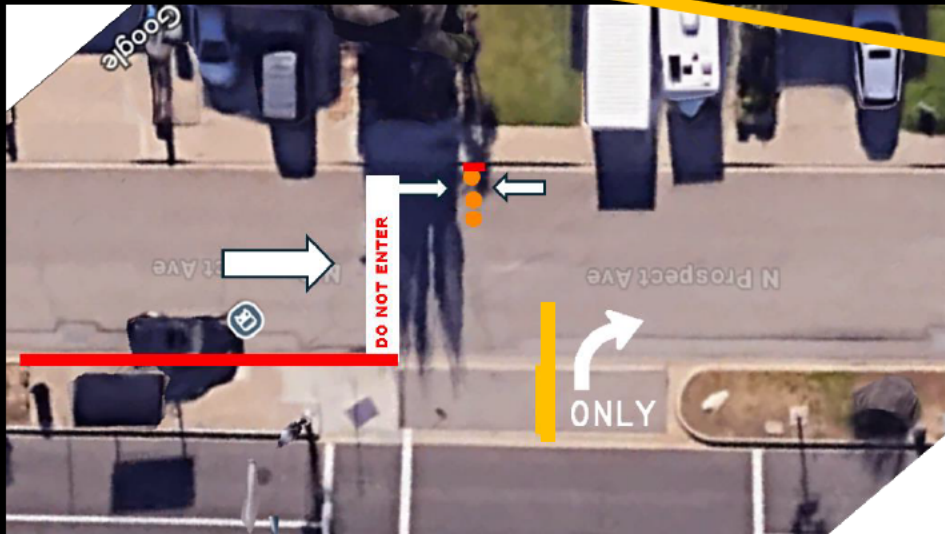


# POTENTIAL SOLUTIONS: SIGN PLACEMENT, PAVEMENT MARKINGS, CORRECTIVE ACTION ON PARKING (NO PARKING IN INTERSECTION or DIRECTIONAL PARKING TO SIGNAL DIRECTIONS OF TRAVEL)



Wrong-Way traffic was less when 1) a car was parked northbound and 2) cars were not parked illegally across driveways (CVC 22500 violation)

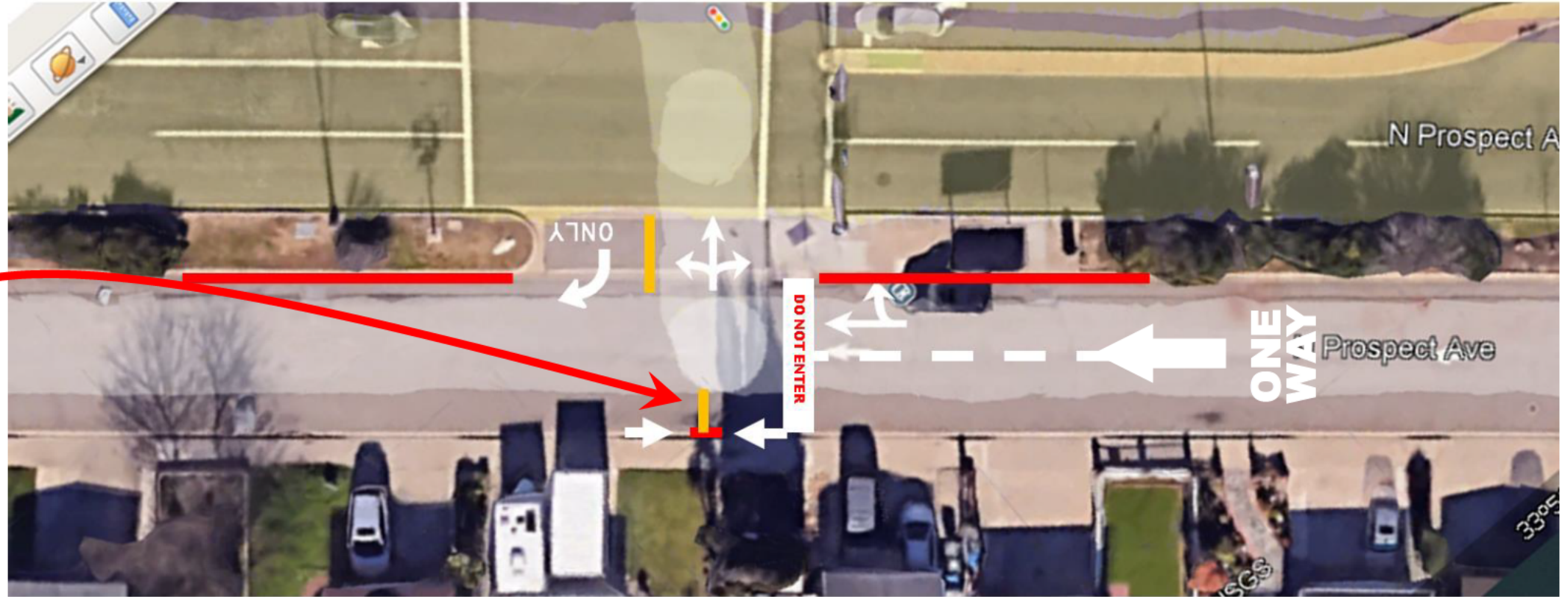
Potential solutions are eye-level No Left Turn, pavement marking Right Turn Only, one-foot red curb with orange traffic separators for directional parking that sends clear signal to drivers





# Proposed Solution

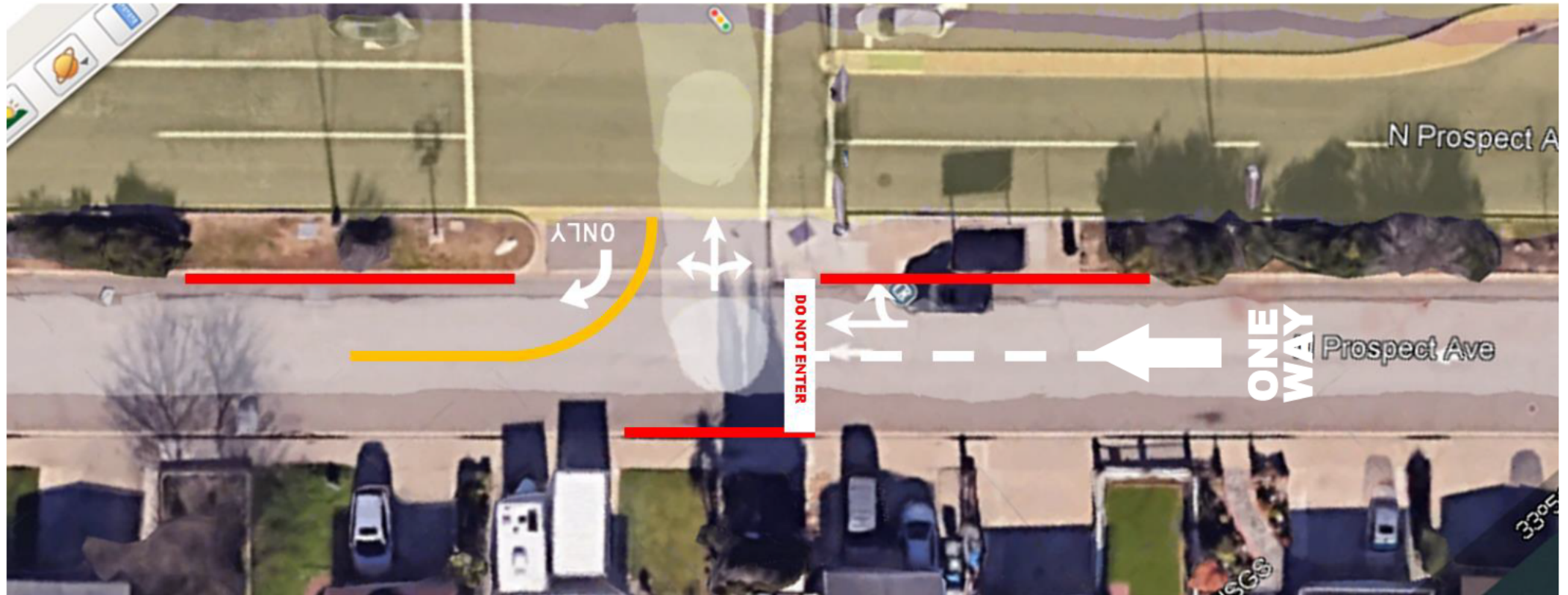
## Road Paint and Directional Parking



1. Division of ingress/egress at T
2. Provide lane space by red curbing 40-foot of bus stop (for traffic and bus stop visibility for safety), 40-foot of ingress transition
3. Directional car parking in intersection separated by one-foot red curb
4. Utilize CalTrans DO NOT ENTER and directional road paint arrows

# Proposed Solution (Removes Directional North-South Parking)

## Road Paint and Protected Lanes



1. Hard division of ingress/egress
2. Provide lane space by red curbing 511/513, 40-foot of bus stop, 40-foot of ingress transition (Forgoes the parking sparing solution of the 1-foot red curb and directional parking)
3. Provide protection with yellow divider and white divider lanes
4. Utilize CalTrans DO NOT ENTER and directional road paint arrows



# The Bus Stop Across from BCHD on the Frontage Road has been the Site of Various RBPD/FD Reports and other Activities

(Note: Seating at Bus Stop is totally obscured from Frontage Road Residents by parked cars and trucks)

The bus stop has been the site of various medical, mental health, and police emergencies. There have been overnight campers (likely unhoused), and patients dumped from hospitals and psych facilities. There is also a concern due to LA County-reported Child Predator investigations in the area.

The bus stop requires red curb back to the trash can area to provide 100% clear visibility at all times for the safety of elderly, students, transit passengers and the overall neighborhood.

The University of California system issued a paper discussing bus stop safety. It noted that “Positive environmental factors include good visibility” for the safety of bus stops.”



**Current Legal Parking Blocks Visibility from the Frontage Road Residents**



**Larger Vehicle Blocking View – Longer Red Curb Needed**

## **Dr. Lesser's comment on the City Anti-Camping Ordinance**

At the RBCC Meeting 5/6/25, Dr. Andy Lesser, MD, Emergency Room physician testified, "I'm so glad that you included the **bus stop provision [in the anti-camping ordinance]** because it's been a major problem with **loitering at the bus stops on the benches**, trash, and unfortunately at Torrance and PCH, people **using the sidewalk as a bathroom by the bus stop because somebody lives at the bus stop and defecates right nearby.**"

## **RBPW Director's Email Regarding Child Predator Investigations Near Bus Stop**

Ted Semaan <Ted.Semaan@redondo.org>

It seems like the **County** put in the lights due to **a safety concern that there have been child predator investigations at houses nearby**. The lights were put in as a response to residents' concerns about the dark spaces around the tank becoming a potential location for child predators to hide. We have asked them to have the lights redirected (as much as possible) and/or confirm the request/need from PD. Thanks, Ted  
**(Email from City was in Response to the Injection Tank immediately adjacent to Bus Stop)**

We recommend that the City acts before a pedestrian, person with disabilities or bicyclist is struck by a wrong-way driver proceeding ILLEGALLY down the Frontage

Thank you for your review and support!