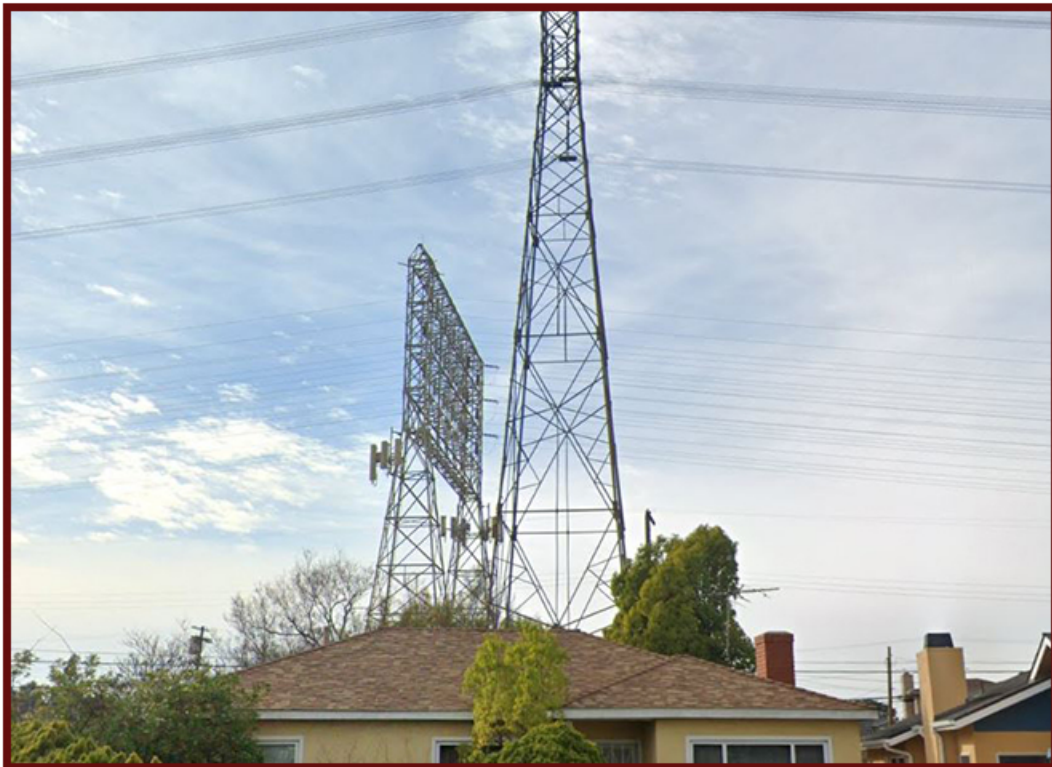
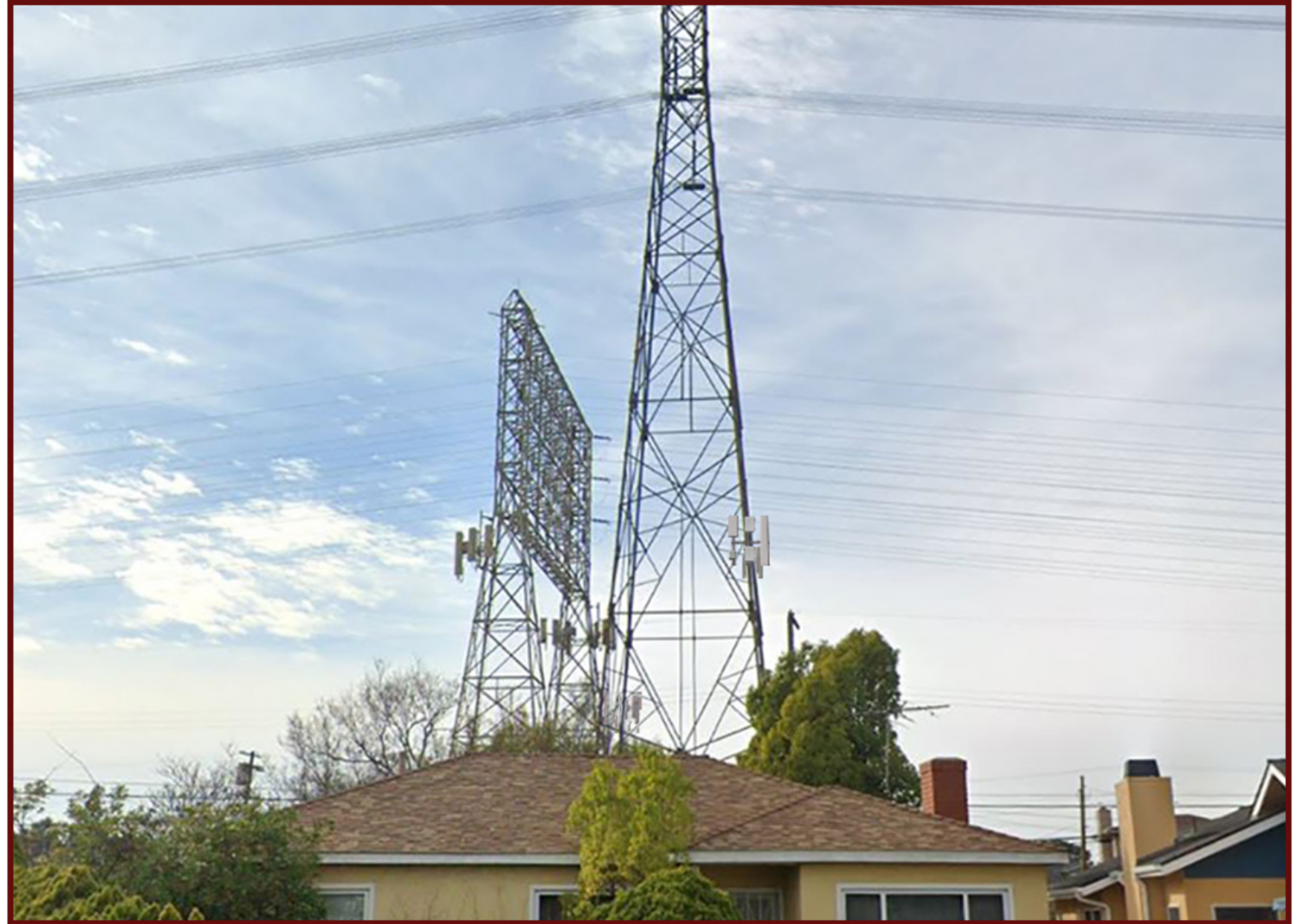


LOCATION



EXISTING

PROPOSED INSTALLATION OF A ~218 SQ. FT. VERIZON WIRELESS TELECOMMUNICATION FACILITY; PROPOSED INSTALLATION OF (3) ANTENNA MOUNTING ASSEMBLIES ON EXISTING 156' SCE TRANSMISSION TOWER; PROPOSED INSTALLATION OF (9) VERIZON WIRELESS ANTENNAS AT 62'-0" & 38'-0" CENTERLINES; PROPOSED INSTALLATION OF (6) VERIZON WIRELESS REMOTE RADIO UNITS (RRUs); PROPOSED INSTALLATION OF (3) VERIZON WIRELESS TOWER MOUNTED JUNCTION BOXES.

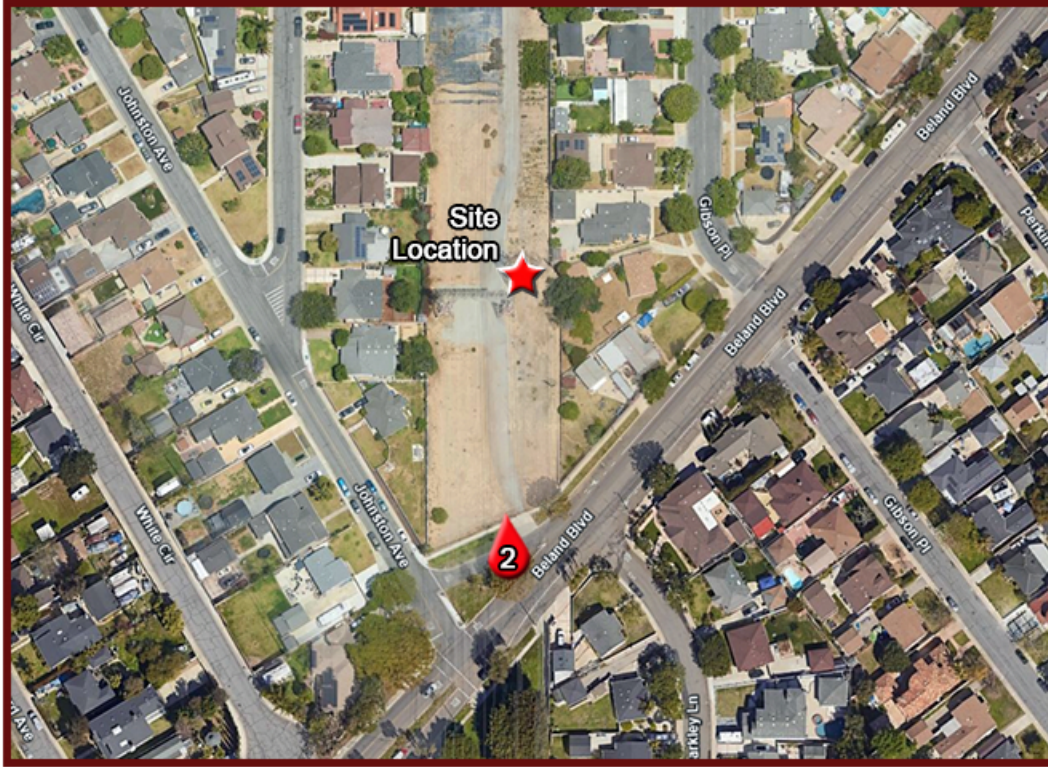


A NextEdge Company

4850 WEST OQUENDO ROAD
LAS VEGAS, NEVADA 89118
OFFICE: (702) 367-7705
FAX: (702) 367-8733



15505 SAND CANYON AVENUE
BUILDING D, 1ST FLOOR
IRVINE, CALIFORNIA 92618



LOCATION



EXISTING

PROPOSED INSTALLATION OF A ~218 SQ. FT. VERIZON WIRELESS TELECOMMUNICATION FACILITY; PROPOSED INSTALLATION OF (3) ANTENNA MOUNTING ASSEMBLIES ON EXISTING 156' SCE TRANSMISSION TOWER; PROPOSED INSTALLATION OF (9) VERIZON WIRELESS ANTENNAS AT 62'-0" & 38'-0" CENTERLINES; PROPOSED INSTALLATION OF (6) VERIZON WIRELESS REMOTE RADIO UNITS (RRUs); PROPOSED INSTALLATION OF (3) VERIZON WIRELESS TOWER MOUNTED JUNCTION BOXES.

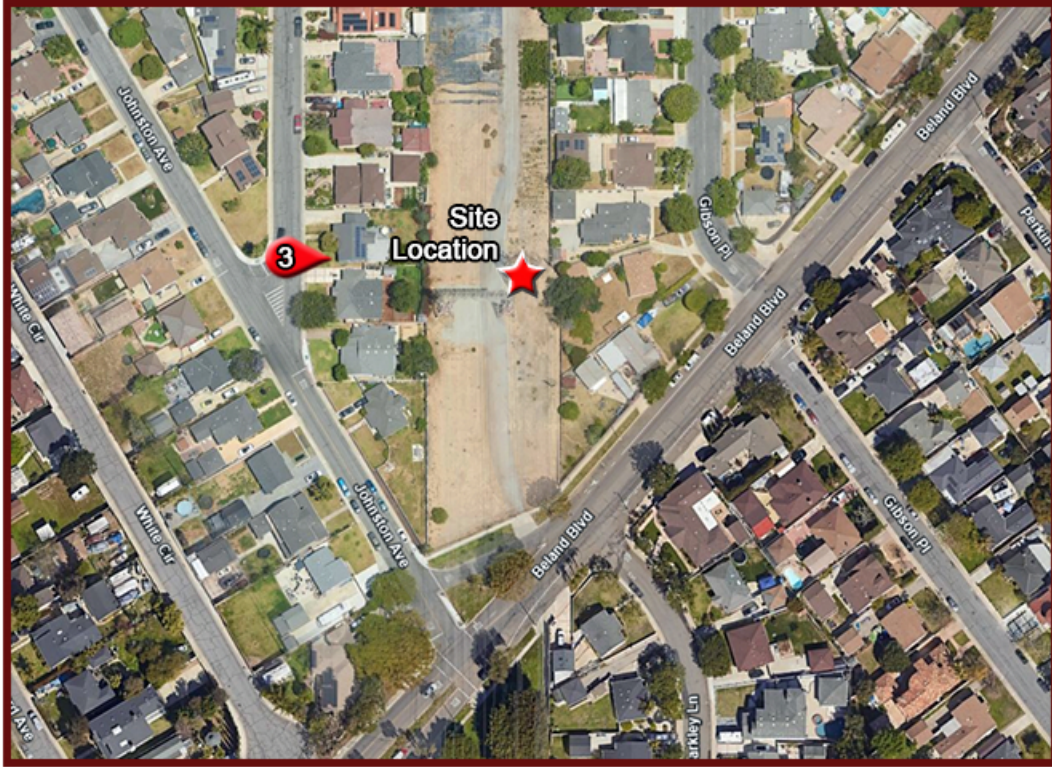


A NextEdge Company

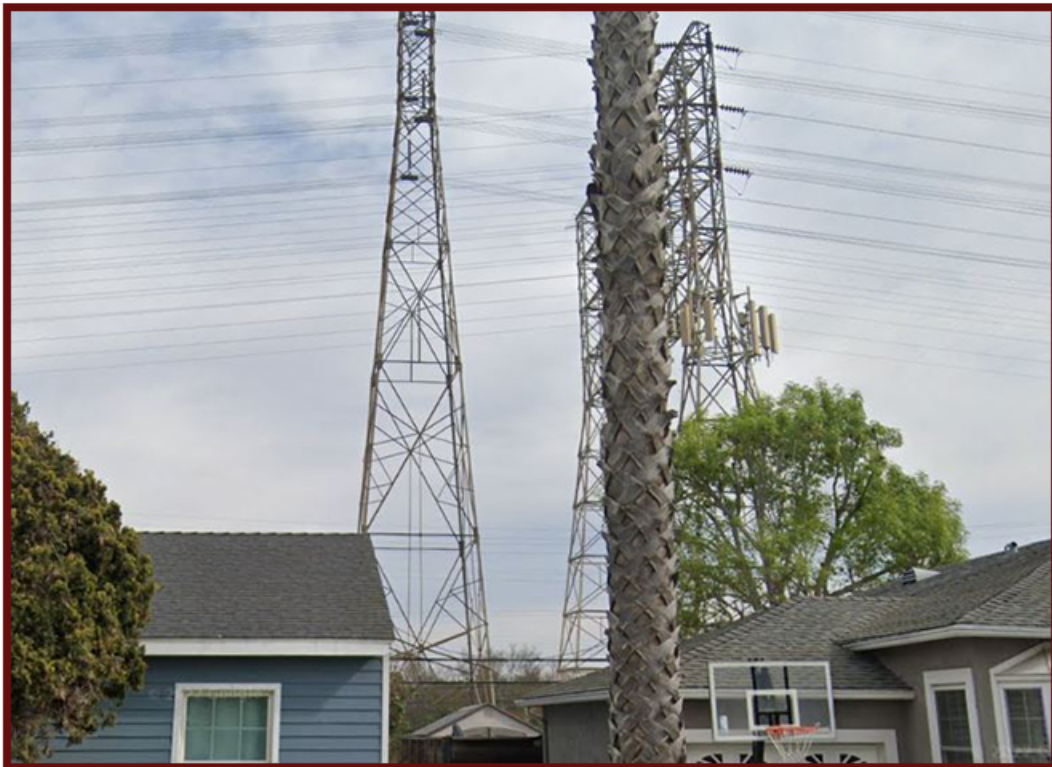
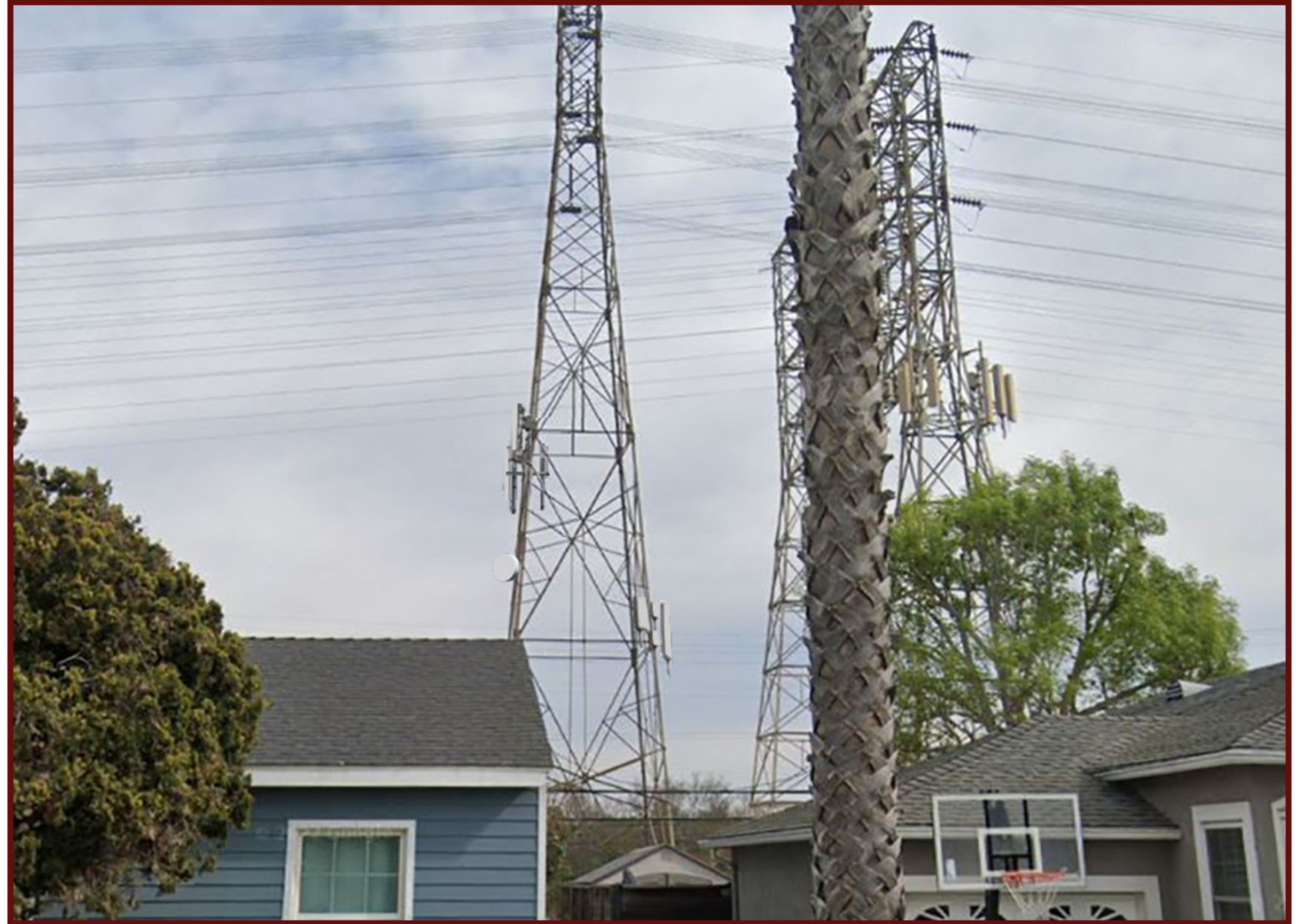
4850 WEST OQUENDO ROAD
LAS VEGAS, NEVADA 89118
OFFICE: (702) 367-7705
FAX: (702) 367-8733



15505 SAND CANYON AVENUE
BUILDING D, 1ST FLOOR
IRVINE, CALIFORNIA 92618



LOCATION



EXISTING

PROPOSED INSTALLATION OF A ~218 SQ. FT. VERIZON WIRELESS TELECOMMUNICATION FACILITY; PROPOSED INSTALLATION OF (3) ANTENNA MOUNTING ASSEMBLIES ON EXISTING 156' SCE TRANSMISSION TOWER; PROPOSED INSTALLATION OF (9) VERIZON WIRELESS ANTENNAS AT 62'-0" & 38'-0" CENTERLINES; PROPOSED INSTALLATION OF (6) VERIZON WIRELESS REMOTE RADIO UNITS (RRUs); PROPOSED INSTALLATION OF (3) VERIZON WIRELESS TOWER MOUNTED JUNCTION BOXES.



A NextEdge Company

4850 WEST OQUENDO ROAD
LAS VEGAS, NEVADA 89118
OFFICE: (702) 367-7705
FAX: (702) 367-8733



15505 SAND CANYON AVENUE
BUILDING D, 1ST FLOOR
IRVINE, CALIFORNIA 92618