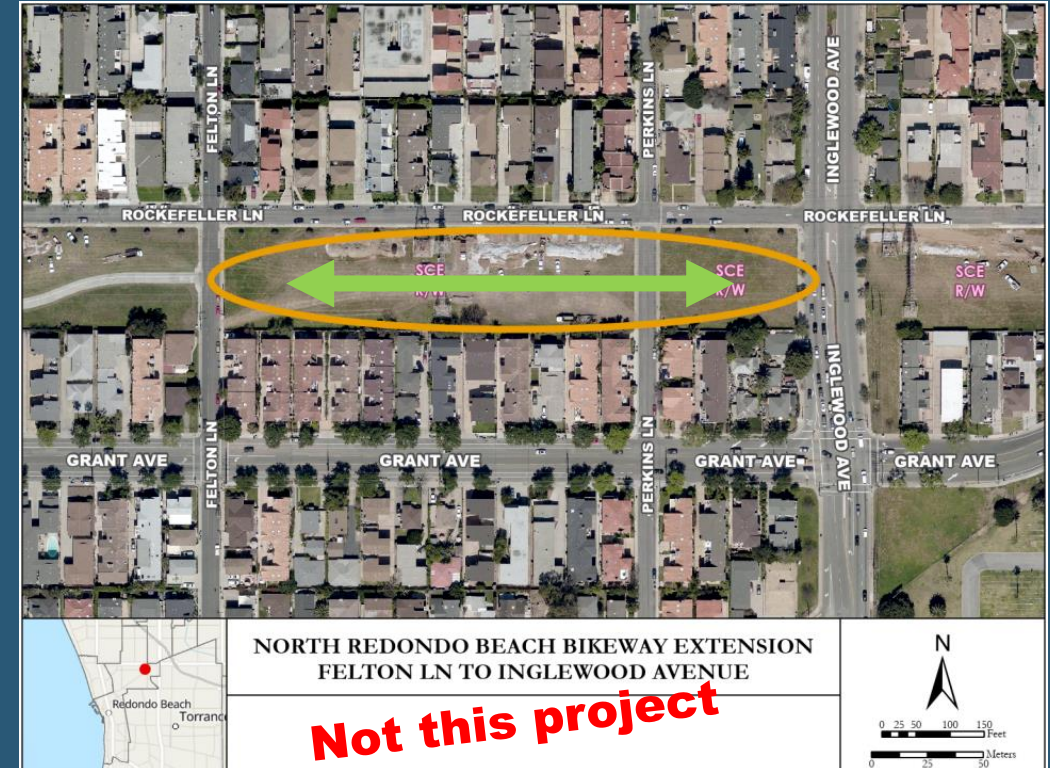


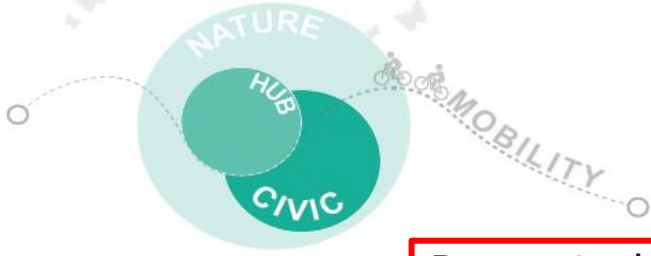
Metro AT Redondo Bch Bl Corridor (MAT Project) NRBB Extension to Grant Av + Mobility Hub

Background – Two Projects

- North Redondo Beach Bikeway (NRBB): Inglewood to Grant, native plant space and mobility hub at Inglewood/Grant
- Metro Active Transportation Grant (Redondo Beach Boulevard corridor) [MAT Project]
- Both projects depend on each other at Inglewood/Grant intersection
- Metro Measure M funded (full design, partial construction)
- City seeking additional funding for both projects, on track for Metro Board approval



NRBB Extension + Native Planting Mobility Hub



Presented at 3.27.2025 District 4 meeting
and 4.28.2025 PWSC meeting

GUIDING PRINCIPLES

- Create a Mobility Hub, incorporating a passive pause point destination.
- Incorporate endangered El Segundo Blue Butterfly habitat and interpretive features.
- Create a civic space of gathering/storytelling through public art.
- Focus people places along the Grant Ave to encourage good Crime Prevention Through Environmental Design (CPTED) best practices.
- Screen the view to the Cemetery while also preserving the view to the Cemetery Signage.

MOBILITY HUB

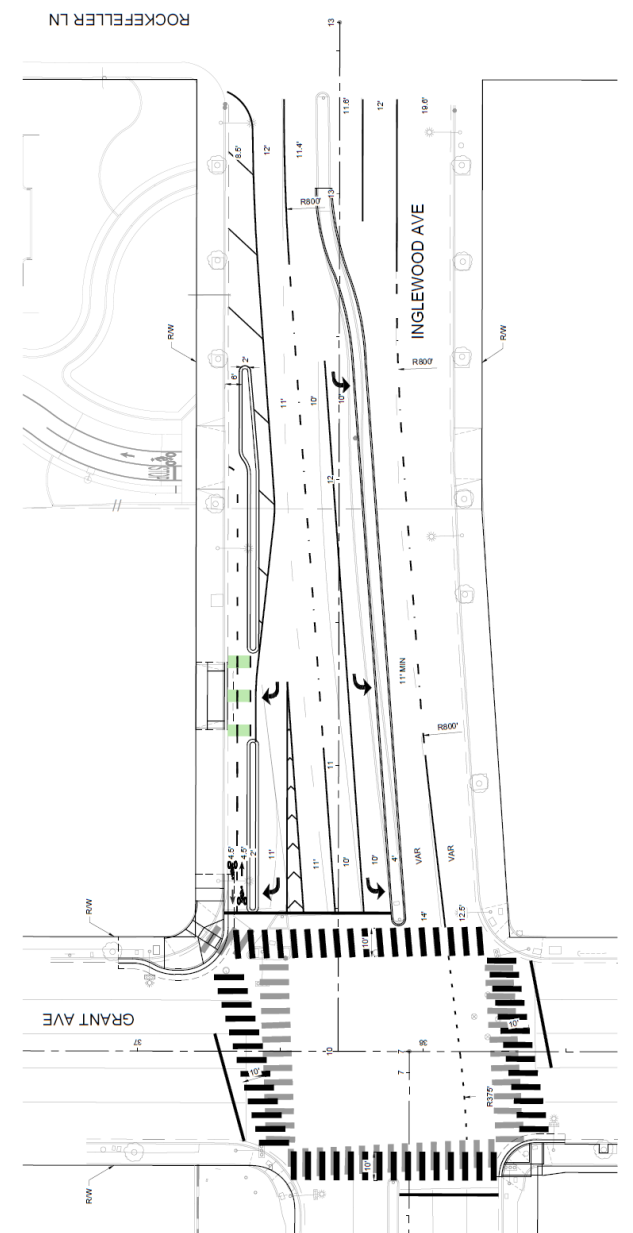
- Prioritize opportunities for mobility based access to site.
- Encourage bicycle traffic to enter the park.
- Incorporate bicycle repair station. Encourage workshop destination for regular bicycle community.
- Provide temporary bike racks for short term rest.

NATURE

- Celebrate the endangered El Segundo Blue Butterfly and create habitats that support their proliferation in the area.
- Opportunity to use planting to screen cemetery.
- Create a natural barricade and boulders from west streetscape.

CIVIC

- Provide areas for mobile vendors to activate site with local business.
- Create passive rest areas and encourage short exploration point for cyclists.
- Park to serve as a community gateway and passive meet up point for cyclists.
- Provide interpretive art elements to connect users to the site.





El Segundo Blue Butterfly



Bike Repair Station



Design Inspiration



Light Overhead Structure



Interpretive Panels



Planting Strategies



Pedestrian Bridge



Arroyo w/ Cobble Bioswale

Design Statement

The landscape vision for this open space is crafted through the concept of wind and mobility. You feel the wind as you cycle to the site as the prevailing westerly winds sweep through the open space. The wind carries the endangered El Segundo Blue Butterfly to this site and the proposed plant massings provide new habitat areas for the butterfly.

The open space features are inspired by the patterns of the Blue Butterfly wings. The central planting areas are an abstraction of the rhythmic spots located on the butterfly wings. This concept also proposes a free standing privacy wall with mounding to screen the cemetery along the southern edge of the site.

The interpretive panels within the main plaza tell the story of the El Segundo Blue Butterfly, it's unique connection to this region, life cycle, and it's native habitats.

Design Components

- Boulders, bollards, bike racks, and fencing to protect open space
- Visual screening for cemetery
- Small driveway and pad for City maintenance
- Metal or fabric shade structure
- At least 25% native habitat
- Bollard lighting rather than tall overhead fixtures
- Water bottle filling station
- Interpretative signage, micromobility wayfinding
- Bike self-repair station and air pump
- Emergency phone/blue light, security cameras
- Public wi-fi

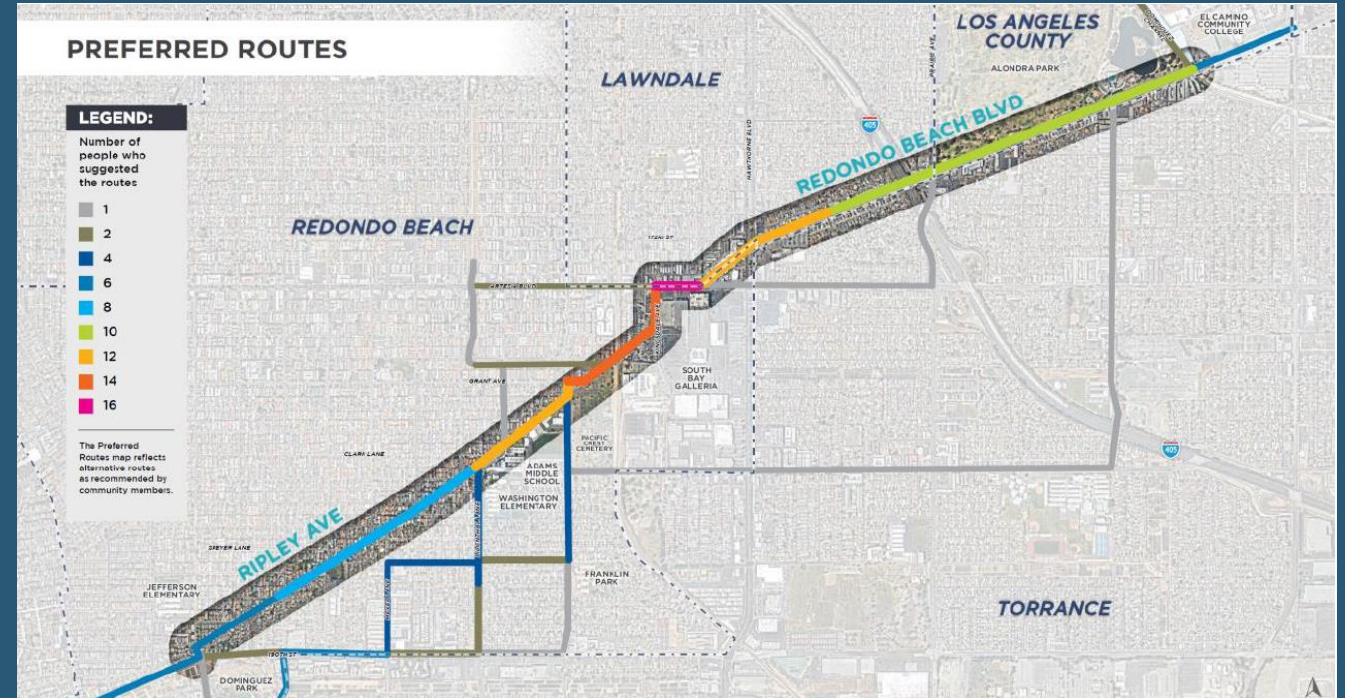
Metro Active Transportation Grant (Redondo Beach BI)

- ~\$8M from LA Metro for low-stress bike/ped facilities along Redondo Beach BI corridor between El Camino CC and Dominguez Park.
- Project is at 15% design, led by LA Metro
- Prepared comprehensive traffic analyses, alternatives analysis, and community outreach
- Lawndale and LA County (El Camino Village) are full agency partners
- Torrance accommodated the project and provided comments on 15% design (2024)
- Redondo is now lead agency



Community Outreach (2022–2025)

- Phase 1 Priorities Survey – 300+ responses
- Alondra Park Halloween, 10/27/2022
- South Bay Galleria, 11/19/2022
- NRBBA Focus Group, 4/13/2023
- BCHD Youth Advisory Group, 4/18/2023
- Jefferson/Washington ES open houses, 5/25/2023
- Phase 2 Alternatives Survey – 367 responses
- Survey for residents along Lilienthal/Ripley
- Survey sent to RBUUSD parents
- District 3 community meeting, 2/28/2024.
- District 4 community meeting, 3/27/2025
- PWSC in 2023 and 2025



Broad public support for project, especially for separated and protected biking facilities. Recommended by PWSC (4.2025)

15% plans included in agenda as link, available on City website since April 2025



Next Steps (Both Projects)

- If 15% concept plans are approved for both projects, staff will prepare final plans and specs for construction
- Consultant will prepare revised exhibit showing zero parking loss in Torrance for the MAT Project
- Work with RBUSD on agreement for MAT Project alignment along Lilienthal
- Possible MOUs with each agency involved in the MAT Project
- City applied for full construction funding via Metro Measure M

RECOMMENDATIONS

- Approve MAT Project (RBB) and NRBB + Mobility Hub Project concept plans
- Approve Metro Funding Agreement for MAT Project cost reimbursement (Lawndale and LA Co. co-signing)
- Approve Professional Services Agreement with CR Associates to prepare plans/specs for MAT Project