

The background of the slide is a teal-colored image of water with gentle ripples, creating a textured, wavy effect.

# J.1. Cal Water Presentation on Drought Response

Public Works Commission Meeting – June 27, 2022



# California Water Service

June 27, 2022

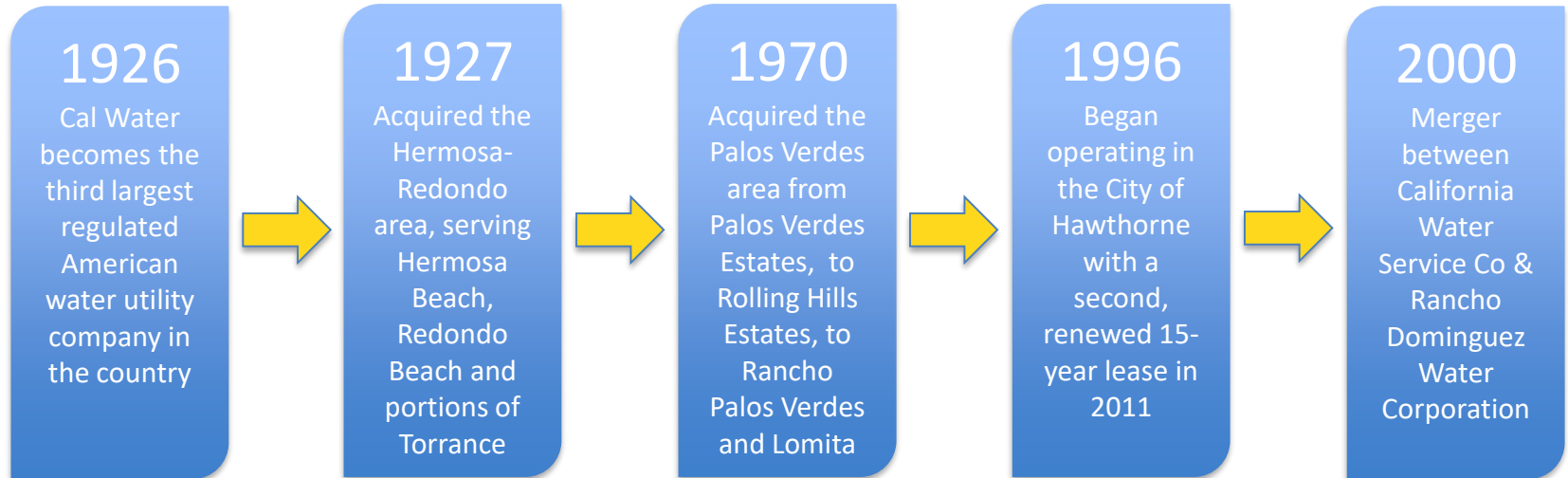
Quality. Service. Value.®

## **The Drought, Water-Use Restrictions, Conservation, and You**

*Public Works Committee Meeting*

# History of Rancho Dominguez

---

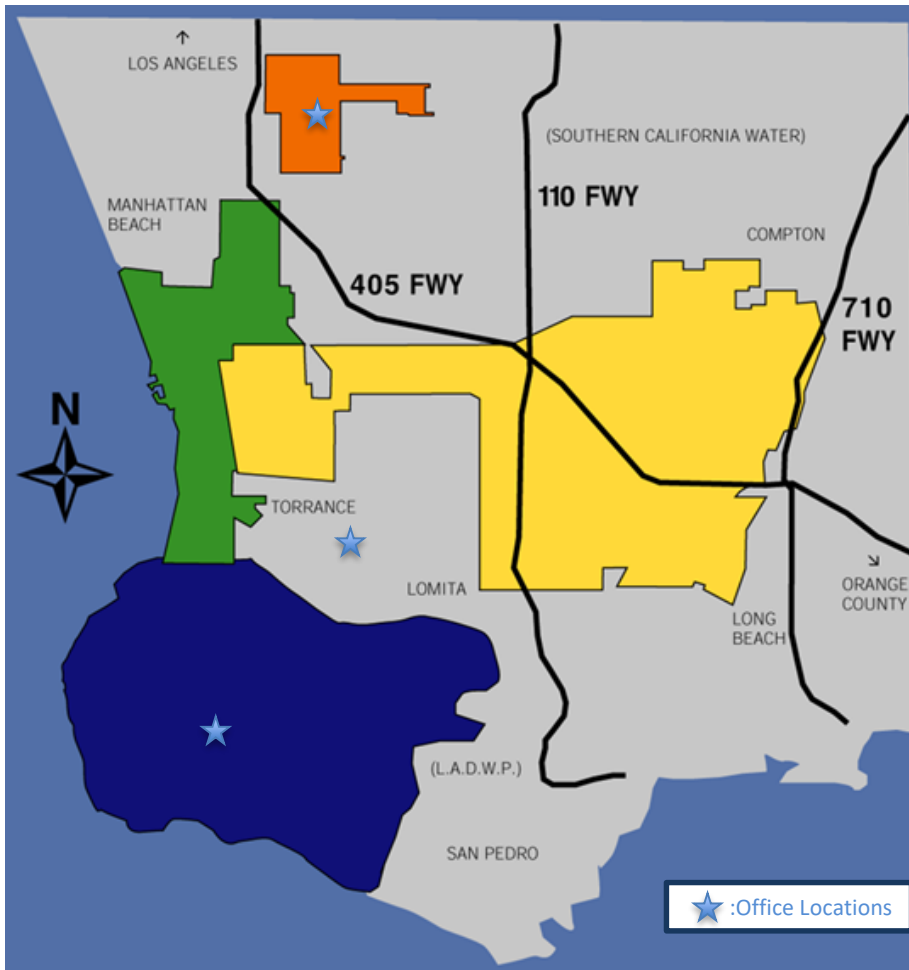


## Today

We serve Palos Verdes Estates, Rancho Palos Verdes, Rolling Hills, Rolling Hills Estates, Hawthorne, Hermosa Beach, Redondo Beach, Carson, and portions of Torrance, Compton, Long Beach, and unincorporated Los Angeles County.



# Service Area Map Overview



**Hermosa/Redondo**  
&

**City of Hawthorne**  
(Rob Thompson – Ops Manager)

**Dominguez**  
(Ralph Felix – Ops Manager)

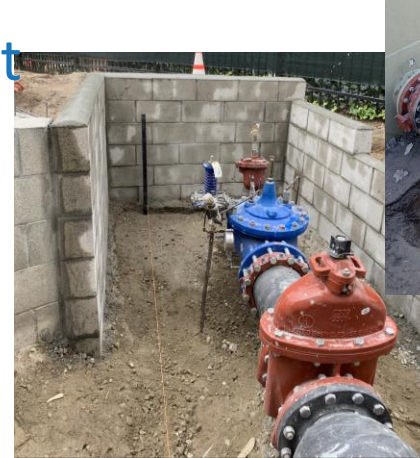
**Palos Verdes**  
(Agustin Baeza – Ops Manager)



# Hermosa-Redondo

---

- 27,477 service connections and 7 pressure zones
- 17 Storage tanks
- 210 miles of main and 1,578 fire hydrants
- Notable Projects
  - Water Treatment Blending Project
  - Main Replacement Program
  - Seismic retrofit projects
  - System control enhancements





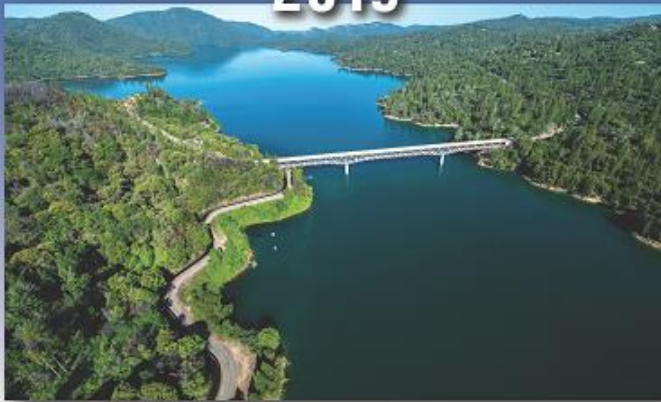
# Emergency Drought Declaration

---

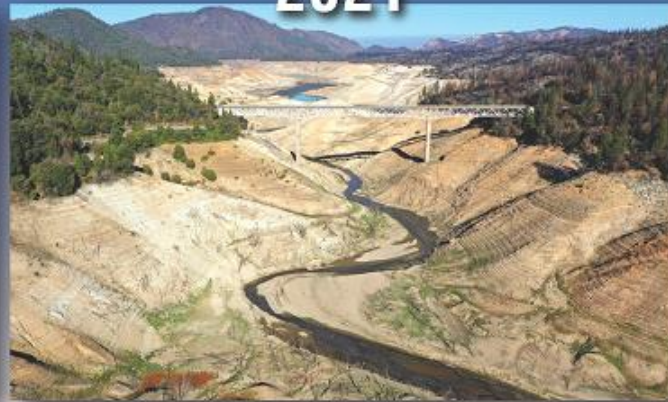
**THIS IS YOUR WATER SUPPLY!**

Lake Oroville, California

**2019**



**2021**



**Let's work together to save water now.**



# Recent 2022 Developments

---

Mar 15

Cal Water files Stage 2 of WSCP for Rancho Dominguez District

Mar 22

According to U.S. Drought Monitor, 37.69% of California now in Extreme or Exceptional Drought, up from just 1.39% on Jan. 11

Apr 15

Stage 2 prohibited uses and irrigation day restrictions go into effect

Jul 8

State Water Board bans watering on all non-functional turf at Businesses and Institutions



# Stage 2 Watering Schedule

---

## Hermosa/Redondo District (2 days/week)

*No watering between 8 a.m. – 6 p.m.*

Street address ending in:	Watering days
Odd number	Tuesday and Saturday
Even number	Wednesday and Sunday
No number	Wednesday and Sunday





# Irrigation Restrictions (Exceptions)

---



- Landscape zones that exclusively use drip and/or micro-spray irrigation systems
- Irrigating with hand-held bucket or similar container, with continuously monitored hose fitted with shut-off nozzle
- Adjusting or repairing irrigation system



# Stage 2 Penalties

---

- First violation - Real-time water measurement device installed on customer meter
- Second violation - \$50 penalty
- Third violation - \$100 penalty
- Fourth violation - Flow-restricting device installed
- Egregious violation - Flow-restricting device installed



# Cal Water Conservation Rebates

## Residential

- High-efficiency clothes washer
- High-efficiency toilet
- Smart irrigation controller
- High-efficiency sprinkler nozzles
- Lawn-to-garden
- Spray-to-drip



**CONSERVE MY California**  
SAVE WATER EVERY DAY

### RESIDENTIAL REBATES: MORE WAYS TO SAVE WATER

During a drought, it's more important than ever to use water wisely. That's why Cal Water is increasing residential rebates — working today and tomorrow to help our customers save water every day.

Visit [calwater.com/conservation](http://calwater.com/conservation) for full program details, qualified product lists, and to take advantage of our rebates and programs.

 <b>SMART IRRIGATION CONTROLLER REBATE*</b> Models must be EPA WaterSense-labeled. UP TO <del>\$125</del> <b>\$125</b> PER CONTROLLER	 <b>HIGH-EFFICIENCY CLOTHES WASHER REBATE*</b> Models must be EPA WaterSense-labeled. UP TO <del>\$150</del> <b>\$300</b> PER WASHER
 <b>HIGH-EFFICIENCY SPRINKLER NOZZLE REBATE*</b> UP TO <b>\$5</b> PER NOZZLE	 <b>HIGH-EFFICIENCY TOILET REBATE*</b> Models must be EPA WaterSense-labeled, MaP Premium-labeled, and certified by the California Energy Commission. UP TO <del>\$50</del> <b>\$100</b> PER TOILET
 <b>LAWN-TO-GARDEN REBATE</b> Lawn removal projects that transform grassy areas into water-wise gardens and landscapes. <b>\$3</b> PER SQUARE FOOT	<small>*See product list for qualified models.</small>
 <b>SPRAY-TO-DRIP REBATE*</b> Conversion of spray irrigation to drip irrigation. <b>\$0.50</b> PER SQUARE FOOT	LEARN MORE AT <a href="http://CALWATER.COM/CONSERVATION">CALWATER.COM/CONSERVATION</a>

Quality. Service. Value.® 



# Cal Water Conservation Rebates

## Commercial

- High-efficiency valve-type toilet
- High-efficiency tank-type toilet
- High-efficiency urinal
- Lawn-to-garden
- Spray-to-drip
- High-efficiency sprinkler nozzles
- Spray body with integrated pressure regulation and check valve
- Large rotary nozzle
- Smart irrigation controller
- Customized incentive program

**CONSERVE MY California**  
SAVE WATER EVERY DAY

**COMMERCIAL REBATES: MORE WAYS TO SAVE WATER**

During a drought, it's more important than ever to use water wisely. That's why Cal Water is increasing commercial rebates — working today and tomorrow to help our customers save water every day.

Visit [calwater.com/conservation](http://calwater.com/conservation) for full program details, qualified product lists, and to take advantage of our rebates and programs.

**HIGH-EFFICIENCY VALVE-TYPE TOILET REBATE\***  
Models must use 1.28 gallons per flush (gpf) or less.  
UP TO ~~\$100~~ **\$200** PER TOILET

**HIGH-EFFICIENCY TANK-TYPE TOILET REBATE\***  
Models must be EPA WaterSense-labeled.  
UP TO ~~\$100~~ **\$200** PER TOILET

**HIGH-EFFICIENCY URINAL REBATE\***  
Models must use 0.125 gpf or less.  
UP TO ~~\$150~~ **\$300** PER URINAL

**LAWN-TO-GARDEN REBATE**  
Lawn removal projects that transform grassy areas into water-wise gardens and landscapes.  
**\$3 PER SQUARE FOOT**

**SPRAY-TO-DRIP REBATE\***  
Conversion of spray irrigation to drip irrigation.  
**\$0.50 PER SQUARE FOOT**

**HIGH-EFFICIENCY SPRINKLER NOZZLE REBATE\***  
UP TO **\$5 PER NOZZLE**

**SPRAY BODY WITH INTEGRATED PRESSURE REGULATION & CHECK VALVE REBATE\***  
UP TO **\$10 PER BODY (MATERIAL)**  
Plus up to an additional \$8 per body if installed by a C-27 contractor.

**LARGE ROTARY NOZZLE REBATE\***  
UP TO **\$30 PER NOZZLE (MATERIAL)**  
Plus up to an additional \$8 per nozzle if installed by a C-27 contractor.

**SMART IRRIGATION CONTROLLER REBATE\***  
Models must be EPA WaterSense-labeled.  
UP TO **\$25 PER STATION**

**CUSTOMIZED INCENTIVE PROGRAM**  
UP TO 30% OF PROJECT COST  
(Final amount based on water savings)  
This item requires pre-qualification. Contact Cal Water at [conservation@calwater.com](mailto:conservation@calwater.com) to begin the process.

\* See product list for qualified models.

LEARN MORE AT [CALWATER.COM/CONSERVATION](http://CALWATER.COM/CONSERVATION)

Quality. Service. Value.®





# Lawn-to-Garden & Spray-to-Drip Rebates

---

- Lawn-to-garden program: \$3 per square foot of lawn removed, with 50% converted to drought-tolerant landscaping
- Spray-to-drip program: \$0.50 per square foot of landscaping converted from standard spray irrigation system to drip system



# Free Conservation Kits

---

Each conservation kit contains:

- Two high-efficiency shower heads
- Leak detection tablets
- Two high-efficiency bathroom faucet aerators
- One garden hose nozzle
- One high-efficiency kitchen faucet aerator





# Additional Customer Resources

---

- Fact/tip sheets
- Informational mailings
- Customer outreach
- Social media posts
- **[calwater.com/conservation](http://calwater.com/conservation)**
- **[calwater.com/drought](http://calwater.com/drought)**





Quality. Service. Value.

# Recommendation

- Receive and File the presentation