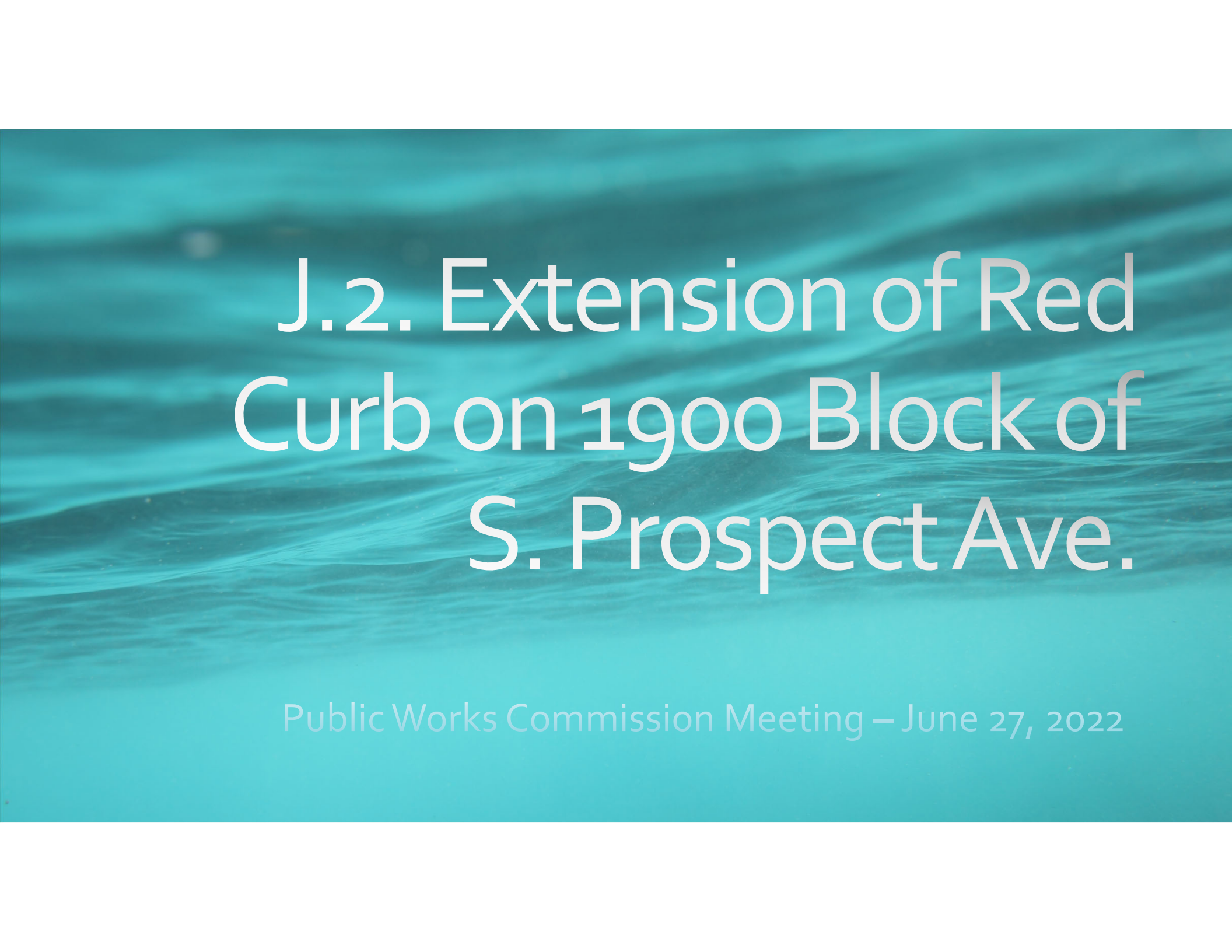




City of Redondo Beach Public Works Commission

June 27, 2022

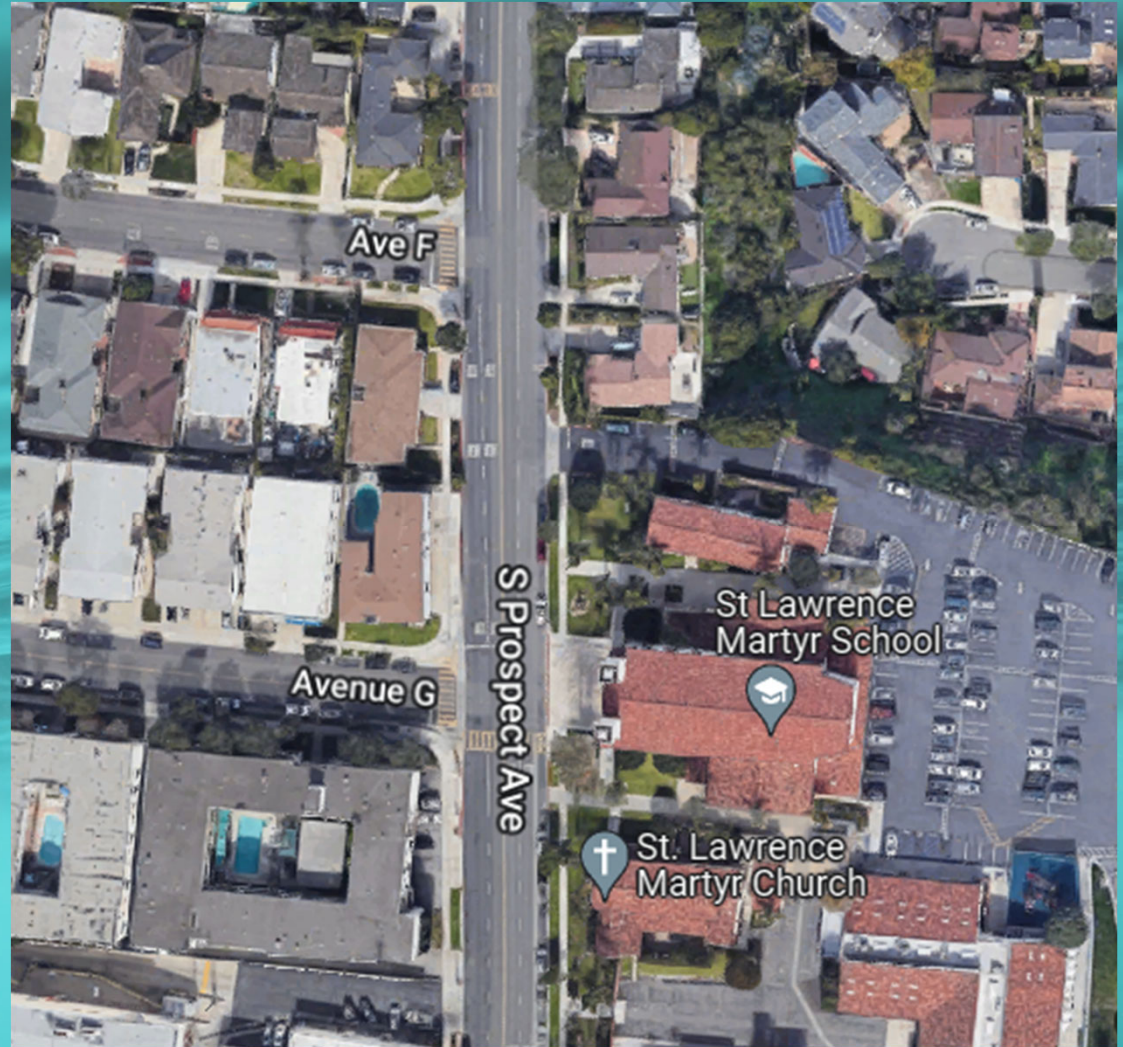
The background of the slide is a solid teal color with a subtle, wavy texture that resembles water or a liquid surface. The waves are gentle and flow from left to right, creating a sense of movement. The color is a deep, slightly muted teal, providing a calm and professional backdrop for the text.

J.2. Extension of Red Curb on 1900 Block of S. Prospect Ave.

Public Works Commission Meeting – June 27, 2022

Background

- Initiated by School
- Staff evaluation
- Contract TE evaluation
- Parking Impacts
- Notification of 49
Neighboring Residences



View to the South from Driveway



Consultant TE Analysis

Sight Distance Analysis

- Corner Sight Distance – POV minor approach
- Stopping Sight Distance – POV major approach
- Per HDM – Corner Sight Distance method not appropriate for urban driveways

Stopping Sight Distance

- South Bound Evaluation – 30 MPH Approach Speed > 200 Foot Sight Distance
- North Bound Evaluation – 25 MPH Approach Speed > 150 Foot Sight Distance



Typical Southbound Approach



Typical Northbound Approach

Consultant TE Analysis



* Nose of vehicle is 4' from curb line extension

Sight Distance Analysis Recommendations:

- No modifications necessary for southbound traffic
- Recommended additional 20-feet of red curb for northbound traffic

Parking Impacts

Installation of recommended new red curb will result in loss of street parking equivalent to one parking space



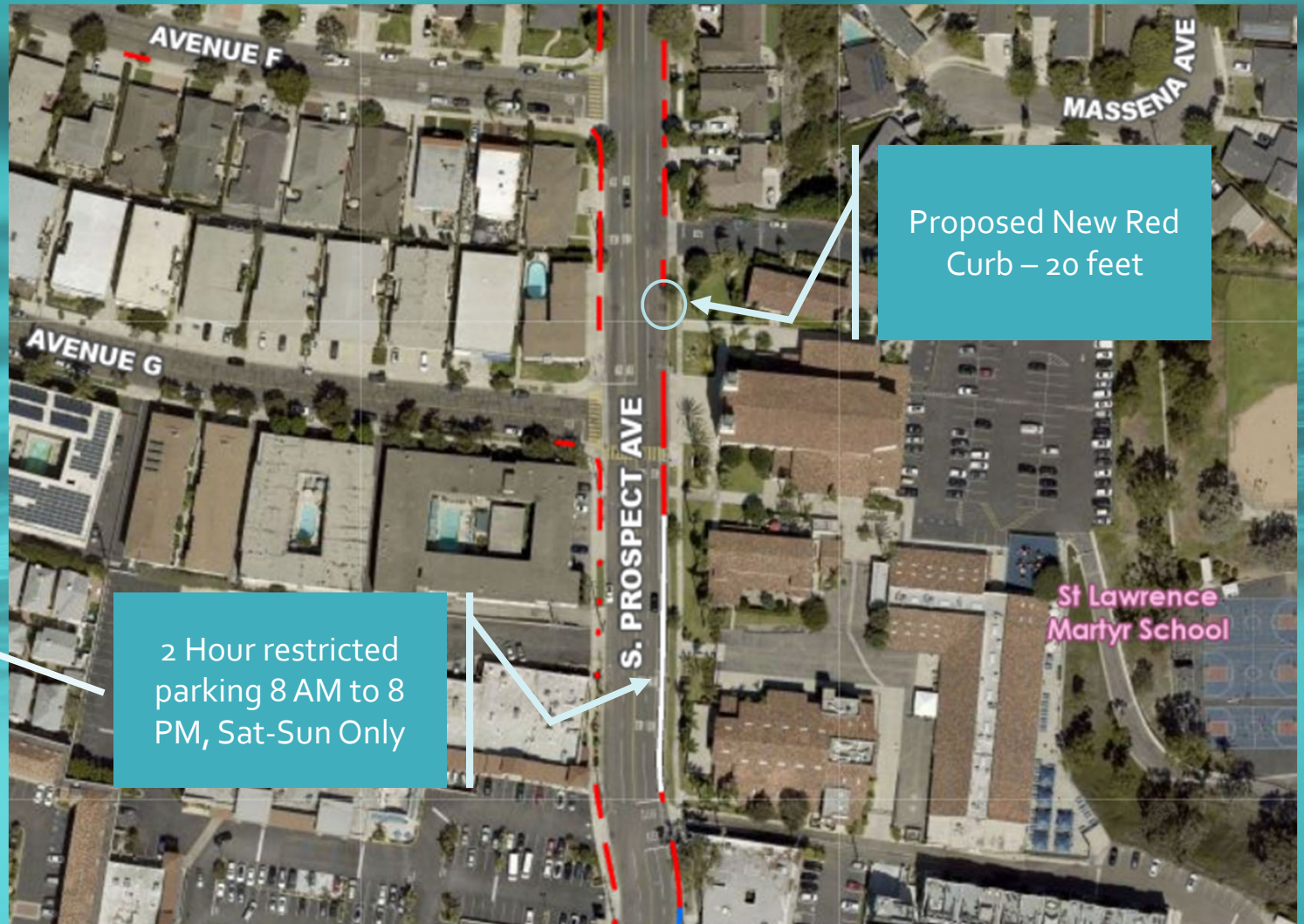
Existing Condition



Proposed Condition

Parking Impacts

Current parking restrictions in the neighborhood



Parking Impacts

Avenue G

RMD - Medium Density
Multifamily Residential Zone

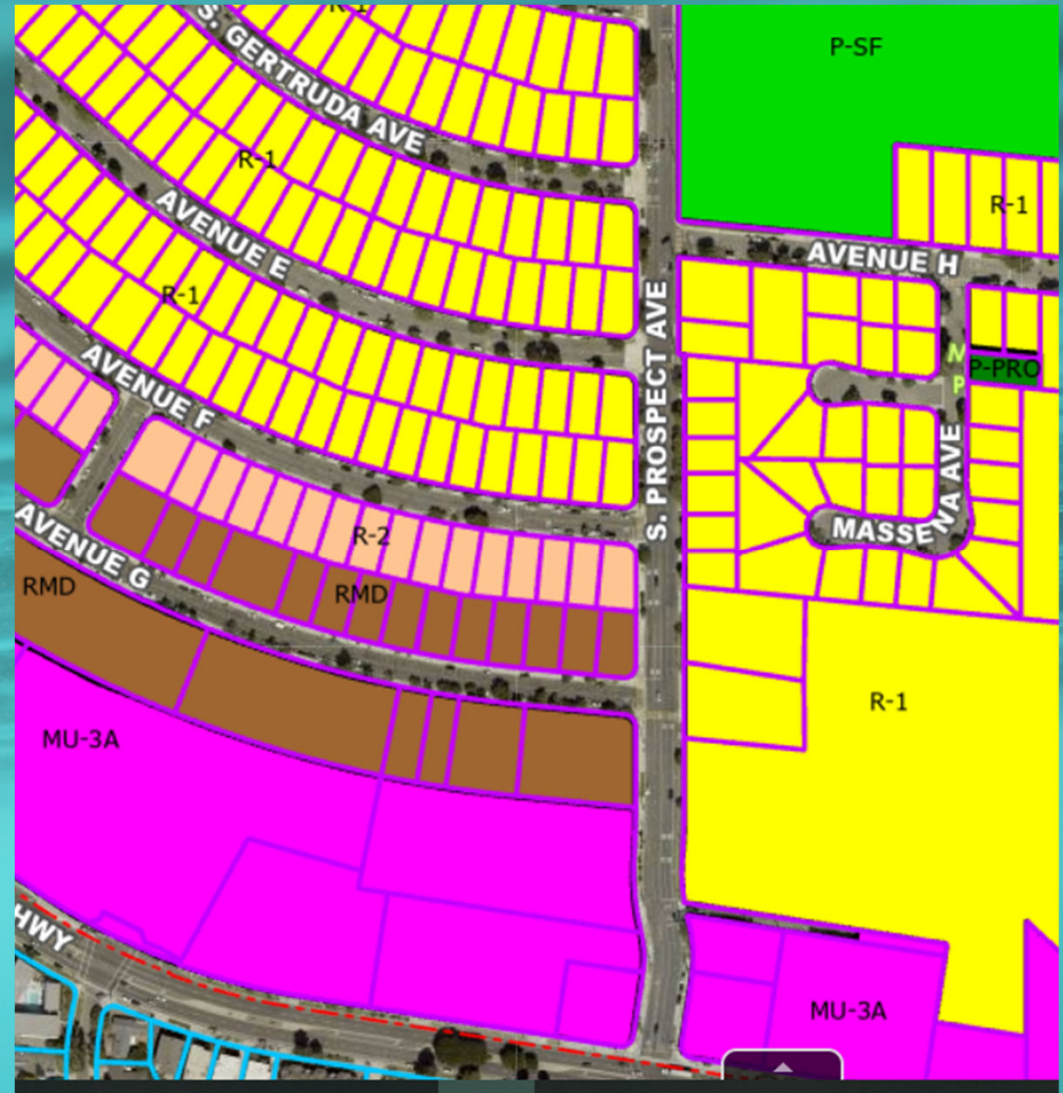
Avenue F

R1 - Single Family Residential

R2 – Low Density Multi-Family

Prospect Ave

R1 – Single Family Residential
(church operates under CUP)



Alternative Recommendations Available:

1. Recommend installation of the additional 20 feet of red curb as discussed in the analysis
2. Recommend installation of the additional 20 feet of red curb as discussed in the analysis with the removal of a similar length of red curb elsewhere on the block if and where possible;
3. Deny the request for the additional red curb; or
4. Other actions as determined by the Public Works Commission.

Per Policy, PWC decision will be implemented if not appealed to the City Council within 30 days.