

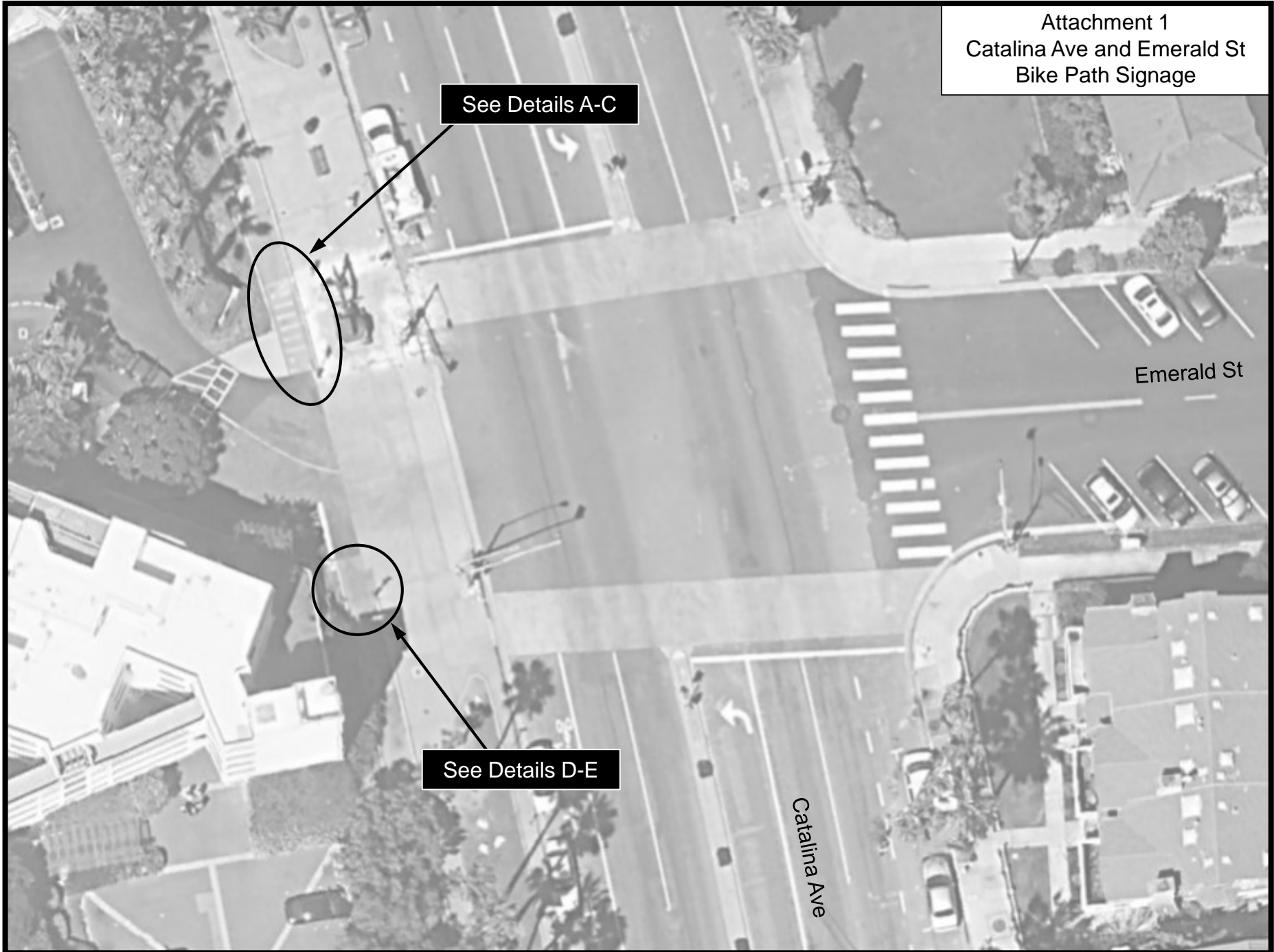
Attachment 1
Catalina Ave and Emerald St
Bike Path Signage

See Details A-C

Emerald St

See Details D-E

Catalina Ave



Attachment 1
Catalina Ave and Emerald St
Bike Path Signage

DETAIL B



Install new R9-7 (bikes left/peds right) sign on existing post for northbound bikes/peds

DETAIL A



Remove existing non-standard R1-1 sign for southbound bikes

Install new R1-1 sign for southbound bikes on new post approximately 20 ft south of existing sign

DETAIL C



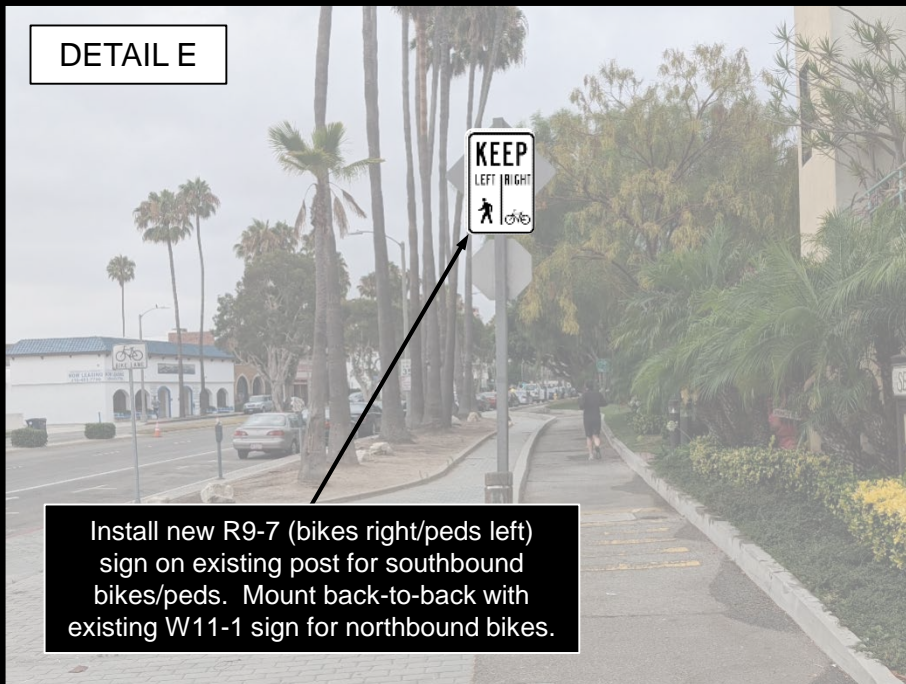
Remove existing bike path/ped path regulatory sign facing westbound

DETAIL D



Remove existing non-standard R1-1 sign and replace with R1-1 sign for northbound bikes on existing post

DETAIL E



Install new R9-7 (bikes right/peds left) sign on existing post for southbound bikes/peds. Mount back-to-back with existing W11-1 sign for northbound bikes.

Attachment 1 Catalina Ave and Emerald St Bike Path Signage

Installation Notes:

1. R1-1 signs shall be 18' X 18".
2. R1-1 and R9-7 signs shall be mounted a minimum of 7 ft above the adjacent surface.
3. R9-7 signs shall be 12" X 18".



R1-1



W11-1



R9-7
Bikes left/
peds right



R9-7
Peds left/
bikes right