

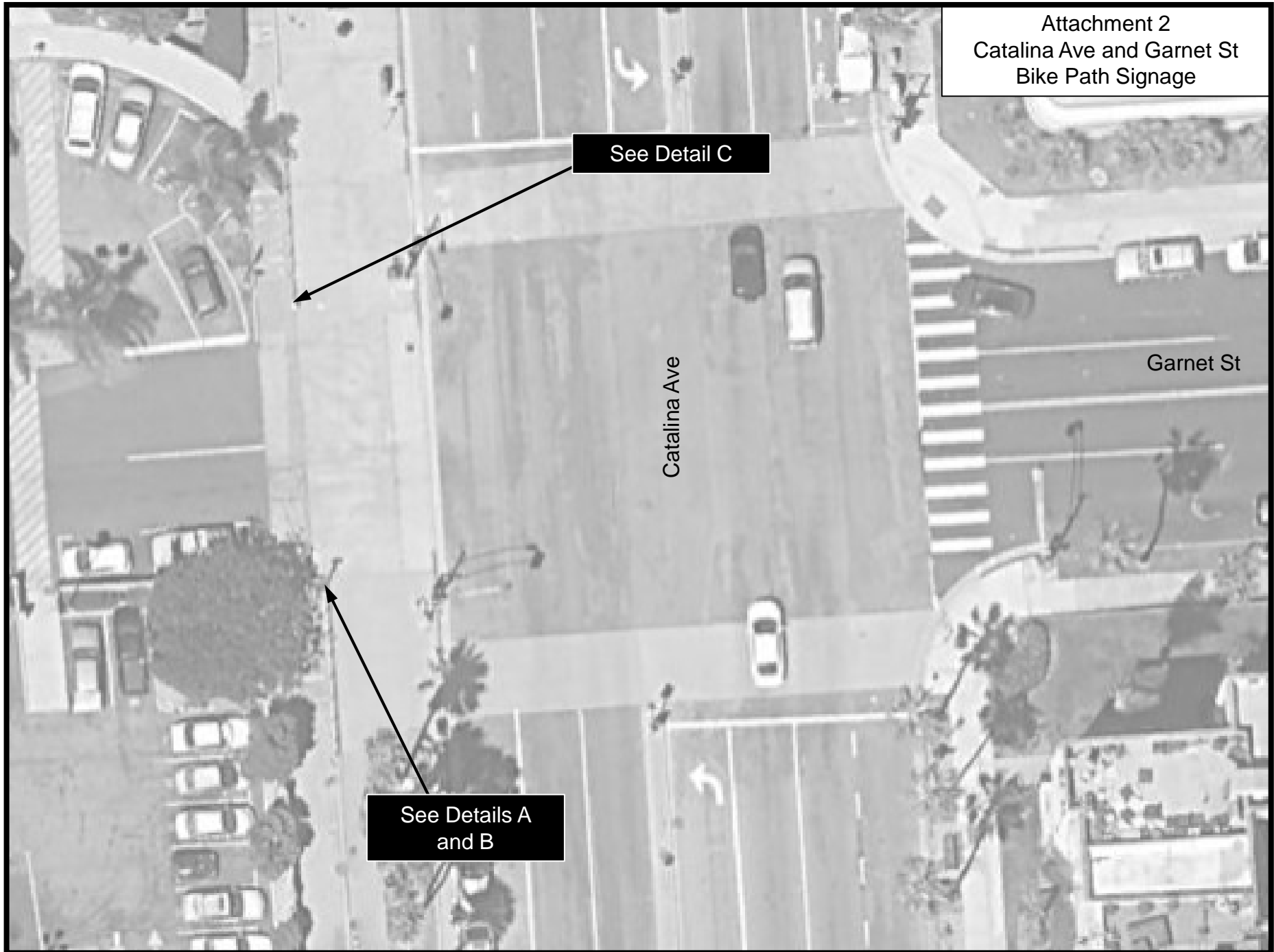
Attachment 2  
Catalina Ave and Garnet St  
Bike Path Signage

See Detail C

Catalina Ave

Garnet St

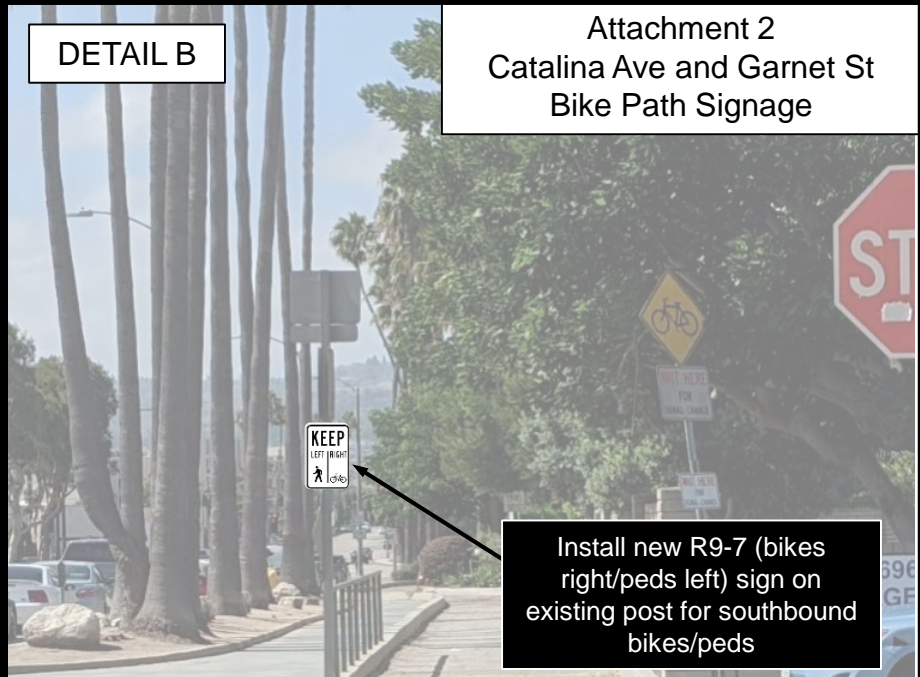
See Details A  
and B



DETAIL A

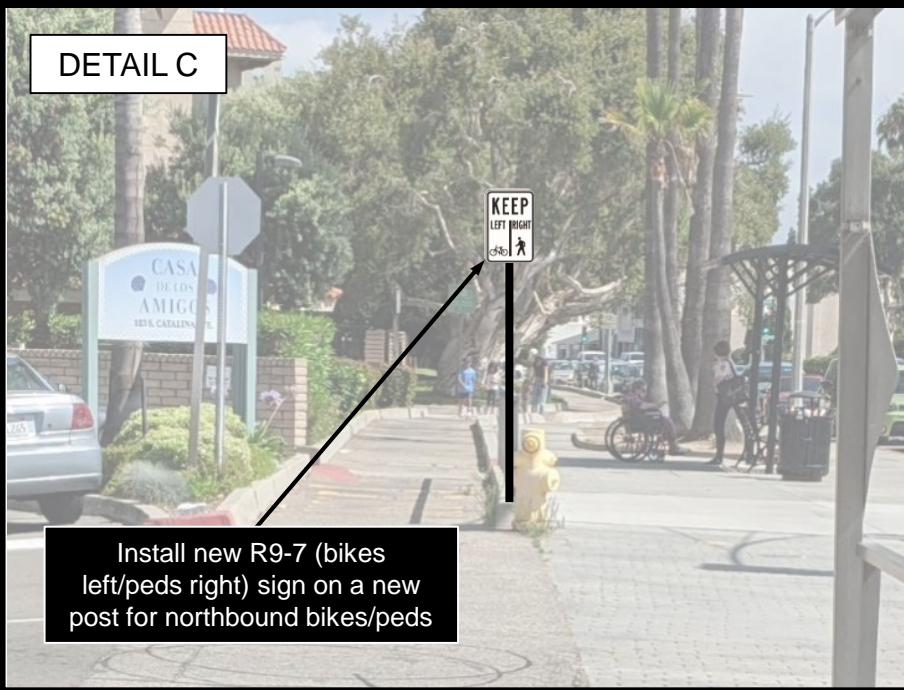


DETAIL B



Attachment 2  
Catalina Ave and Garnet St  
Bike Path Signage

DETAIL C



R1-1



D11-1



R9-7  
Bikes left/  
peds right



R9-7  
Peds left/  
bikes right

**Installation Notes:**

1. R1-1 shall be 18' X 18".
2. Detail A and C signs shall be mounted a minimum of 7 ft above the adjacent surface.
3. R9-7 signs shall be 12" X 18".