

Two Waste Stream Collection Pilot



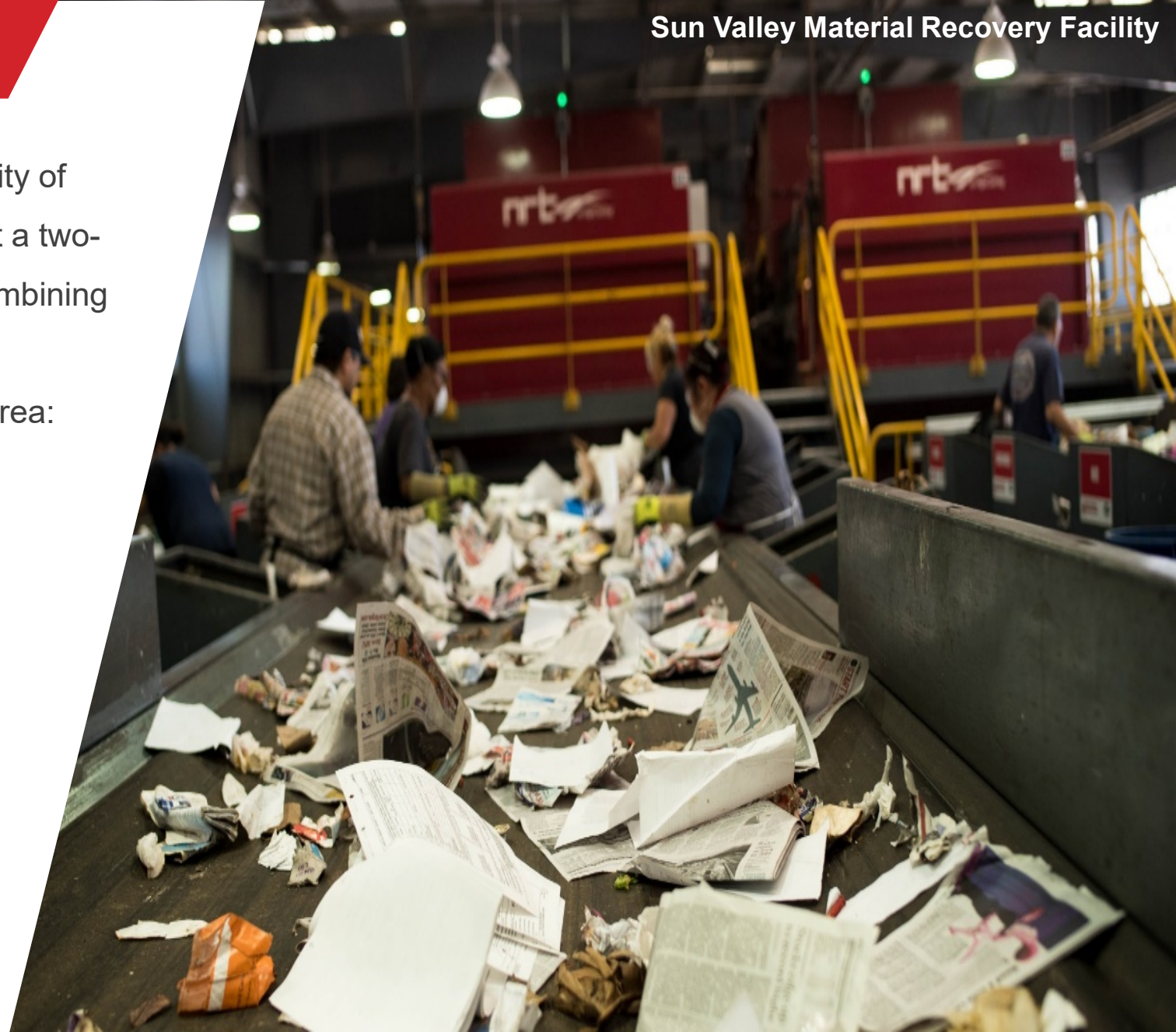
- First Amendment with Athens Services approved June 2019
 - 9 years plus a two-year City option to extend
- Two-waste stream Pilot Program included in the amendment
- Thursday residential route selected due to density and narrow streets
- Pilot program plan presented to the Public Works Commission in October 2019
- Pilot program plan presented and approved by the City Council in February 2020
- Pilot program commenced in March 2020

Pilot Program Hypothesis

In accordance with the waste hauling contract, the City of Redondo Beach directed Athens Services to conduct a two-waste stream pilot program to determine whether combining recycling and trash into one truck will have long term environmental benefits on the city and surrounding area:

The pilot program set forth tested the following environmental benefits:

- Reduction in traffic congestion and noise pollution
- Reduction in carbon footprint within city limits
- Reduction in wear and tear city streets
- Heighten road safety
- Elimination of source separation
- Diversion impacts





Current Collection Program

Athens Services current collection program in Redondo Beach:

Program Collection System

-  Three pass collection- 3 trucks

Containers

-  Three-barrels (Trash, Recycling, Organics)
-  Source Separating

Processing

-  Athens transports trash to SERRF

Diversion

-  75% diversion





Two Waste Stream Collection Pilot Program

Athens Services piloted a Two Waste Stream Collection system in Redondo Beach to analyze the environmental benefits.



Program Collection System

-  Two pass collection- 2 trucks

Containers

-  Two-barrels (Trash/Recycling, Organics)
-  No longer require customers to separate recyclables

Processing

-  Athens processed mixed-waste at State of the Art Material Recover Facility (MRF)
-  Transferred landfill residual to SERFF

Diversion

-  Maintained 75% contract diversion



🚚 Pilot Timeframe

🚚 March 5, 2020 – November 5, 2020

🚚 Two Council Districts

🚚 District 3

🚚 District 4 (majority)

🚚 District 5

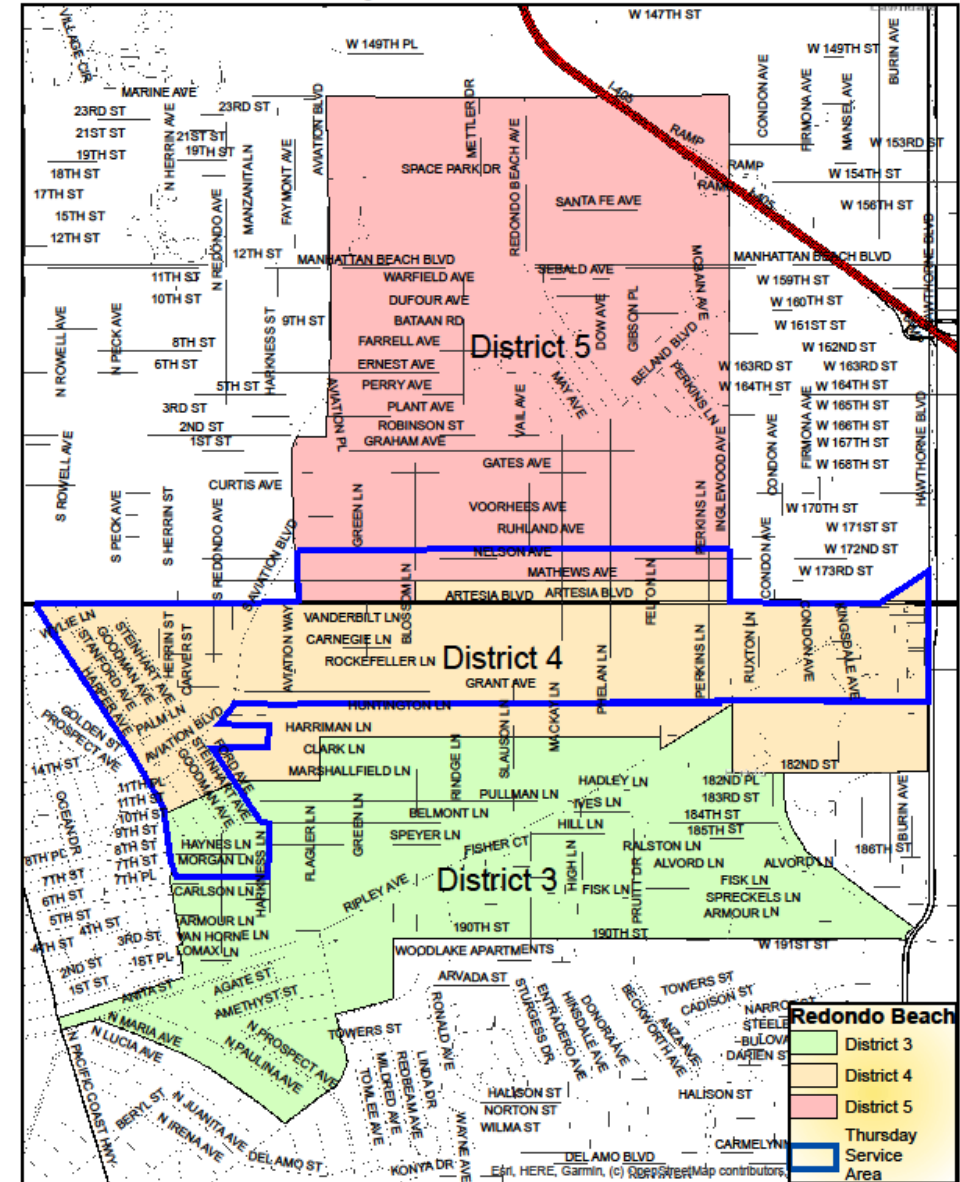
🚚 Residential Count

🚚 3,794

🚚 Route

🚚 Thursdays

Thursday Service area and Districts



Three Waste Streams VS. Two Waste Streams Collection Route Data

Current 3 Barrel System					
Routes	Barrel Count	Tons	Hrs	Miles	Trips
320 Trash & Green	1373	10.5	11:21	86	2
321 Trash & Recycle	1373	11.3	11:48	93	2
322 Trash & Green	1534	10.6	11:07	87	2
323 Trash & Recycle	1388	13.0	11:52	80	2
324 Trash & Recycle	2110	13.0	10:58	86	2
325 Trash & Recycle	1705	14.3	12:00	91	2
326 Recycle & Green	2124	4.8	10:30	94	2
327 Recycle & Green	2214	7.8	11:33	98	2
Total	13821	85	91:09	715	16

2 Barrel System					
Routes	Barrel Count	Tons	Hrs	Miles	Trips
320 Trash	1445	11.8	13:00	149	2
321 Trash	1345	12.5	12:30	79	1
322 Trash	1721	13.6	13:00	146	2
323 Trash	1501	13.6	12:45	147	2
324 Trash	1841	16.9	13:00	147	2
325 Trash	2205	16.9	13:00	152	2
326 Green	1755	8.2	12:15	80	1
327 Green	2008	10.0	12:00	60	2
Total	13821	104	101:30	960	14

Two Waste Stream Program Options

Option 1

- 2-Waste Stream- Mixed Waste
- Transport to MRF- residual to SERRF
- Diversion remains at 75%
- Cost increase factors: Operational and Weekly Disposal fees

Weekly Disposal Cost Increase	28,212
Weekly Operations Cost Increase	3,300
Total Weekly Cost Increase	31,512
Total Monthly Cost Increase	136,552
Number of Residences	15,514
Cost per Resident	8.80
Current Monthly Rate	20.74
New Monthly Rate	29.54
Percent Increase	42%

Option 2

- 2-Waste Stream- Mixed Waste
- Transport to MRF- residual to landfill
- Diversion decreases to 52%
- Cost increase factors: Operational and Weekly Disposal fees

Weekly Disposal Cost Increase	11,908
Weekly Operations Cost Increase	3,300
Total Weekly Cost Increase	15,208
Total Monthly Cost Increase	65,901
Number of Residences	15,514
Cost per Resident	4.25
Current Monthly Rate	20.74
New Monthly Rate	24.99
Percent Increase	20%

Option 3

- Remain status quo
- 3-Waste Stream Program

Recommendation

- **Provide input on the findings of the pilot program**