



# City of Redondo Beach

## STUDY AREA PROFILE

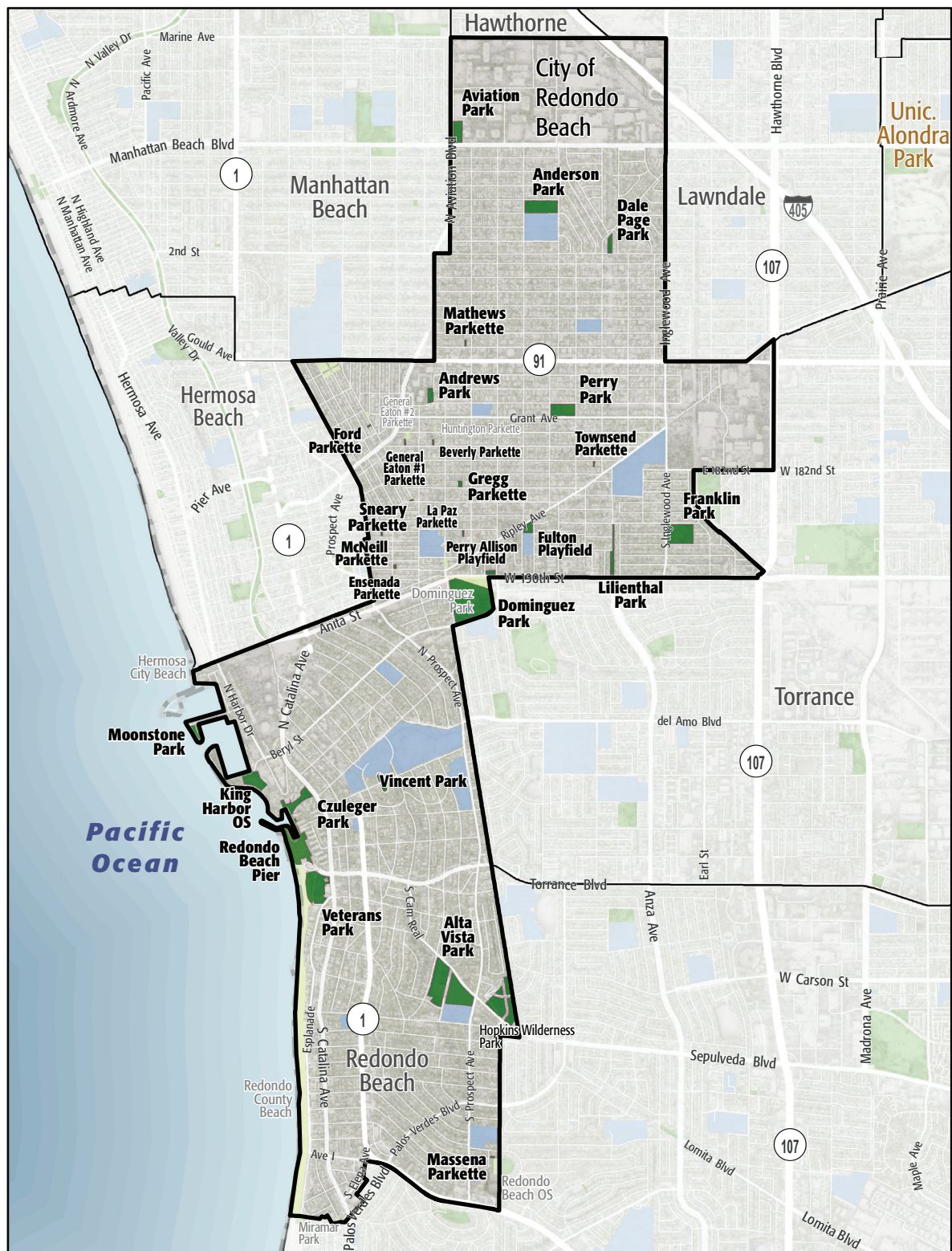
STUDY AREA ID #186

- BASE MAP
- PARK METRICS
- WHERE ARE PARKS MOST NEEDED
- AMENITY QUANTITIES AND CONDITIONS
- PARK NEEDS FRAMEWORK
- PROJECT COST ESTIMATES
- PROJECT REPORTING FORM
- COMMUNITY ENGAGEMENT FORM





# STUDY AREA BASE MAP



City of Redondo Beach

- Existing Park
- Existing Park Outside Study Area
- Existing School
- Other Open Space

# PARK METRICS



## PARK LAND: Is there enough park land for the population?

**92.7** PARK ACRES  
within study area

**67,722**  
POPULATION

**1.4** PARK ACRES  
PER 1,000

The county average is 3.3 park acres per 1,000

\*This section does not include the 5.1 acres of regional open space, nature preserves, or State and National Forest land in this Study Area.

**PARK ACCESSIBILITY:**  
Is park land located where  
everyone can access it?

**87%** of population living  
WITHIN 1/2 MILE  
of a park

The county average is 49% of the population living  
within 1/2 mile of a park

## PARK PRESSURE

How much park land is available to residents in the area around each park?

**Alta Vista Park (15.94 Acres)**  
2.1 park acres per 1,000

**Anderson Park (5.93 Acres)**  
1.55 park acres per 1,000

**Andrews Park (1.18 Acres)**  
0.74 park acres per 1,000

**Aviation Park (2.79 Acres)**  
3.61 park acres per 1,000

**Beverly Parkette (0.17 Acres)**  
0.14 park acres per 1,000

**Czuleger Park (3.66 Acres)**  
2.33 park acres per 1,000

**Dale Page Park (1.16 Acres)**  
0.23 park acres per 1,000

**Dominguez Park (19.65 Acres)**  
8.72 park acres per 1,000

**Ensenada Parkette (0.18 Acres)**  
0.19 park acres per 1,000

**Ford Parkette (0.12 Acres)**  
0.06 park acres per 1,000

**Franklin Park (6.85 Acres)**

2.97 park acres per 1,000

**Fulton Playfield (1.21 Acres)**

0.73 park acres per 1,000

**General Eaton #1 Parkette (0.17 Acres)**

0.17 park acres per 1,000

**Gregg Parkette (0.35 Acres)**

0.26 park acres per 1,000

**King Harbor OS (3.8 Acres)**

7.96 park acres per 1,000

**La Paz Parkette (0.18 Acres)**

0.22 park acres per 1,000

**Lilienthal Park (2.14 Acres)**

1.12 park acres per 1,000

**Massena Parkette (0.14 Acres)**

0.09 park acres per 1,000

**Mathews Parkette (0.18 Acres)**

0.04 park acres per 1,000

**McNeill Parkette (0.12 Acres)**

0.11 park acres per 1,000

**Moonstone Park (1.47 Acres)**

13.86 park acres per 1,000

**Perry Allison Playfield (0.59 Acres)**

0.96 park acres per 1,000

**Perry Park (4.13 Acres)**

0.69 park acres per 1,000

**Redondo Beach Pier (11.57 Acres)**

59.5 park acres per 1,000

**Sneary Parkette (0.1 Acres)**

0.11 park acres per 1,000

**Townsend Parkette (0.17 Acres)**

0.1 park acres per 1,000

**Veterans Park (7.83 Acres)**

1.88 park acres per 1,000

**Vincent Park (0.93 Acres)**

0.25 park acres per 1,000



# WHERE ARE PARKS MOST NEEDED?

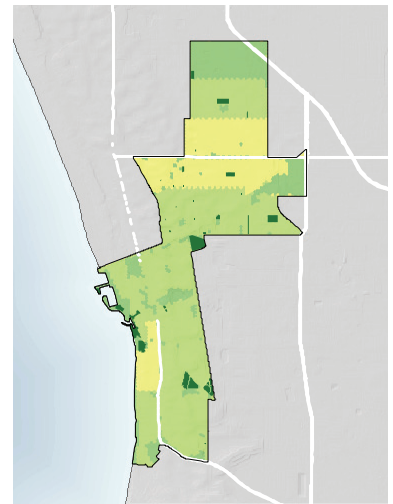
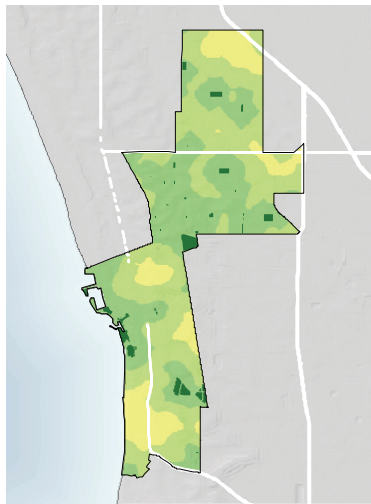
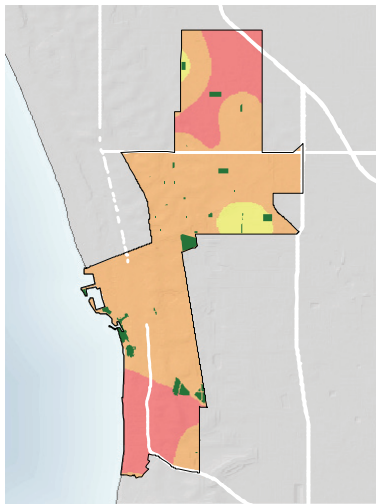
PARK ACRE NEED

+

DISTANCE TO PARKS

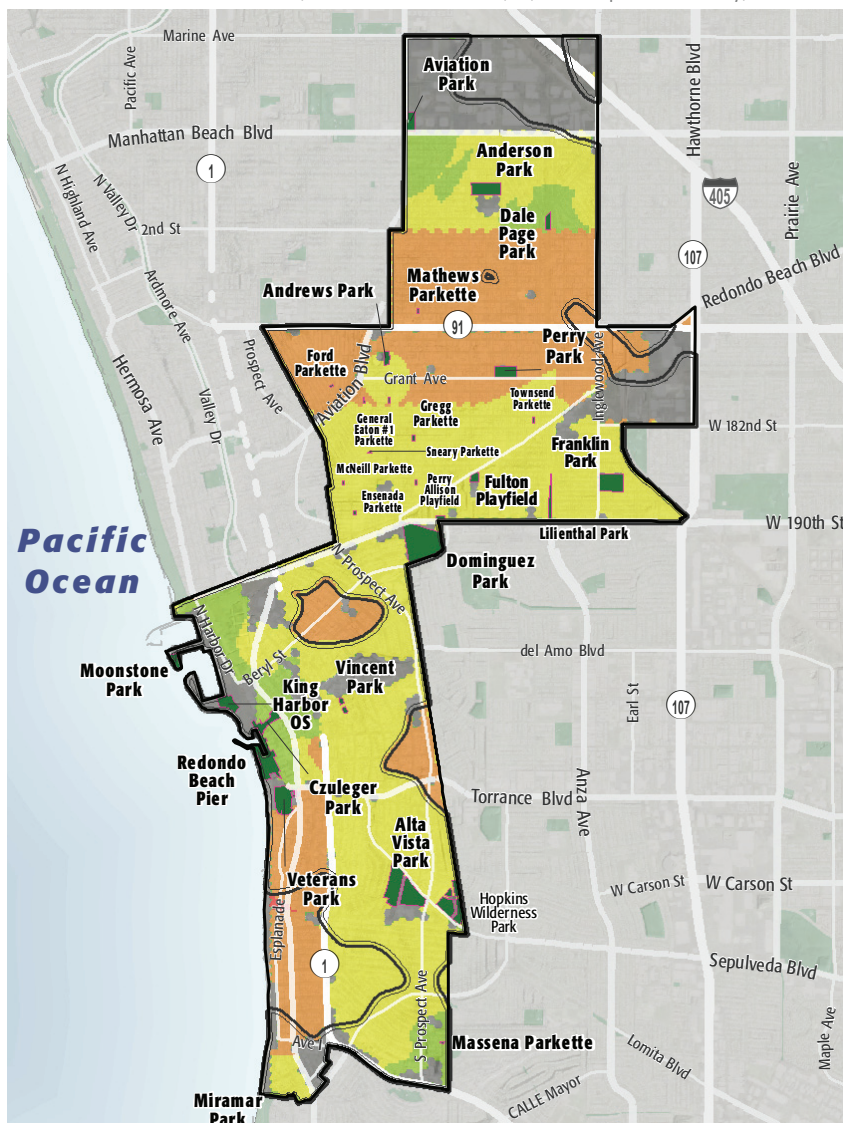
+

POPULATION DENSITY



= PARK NEED

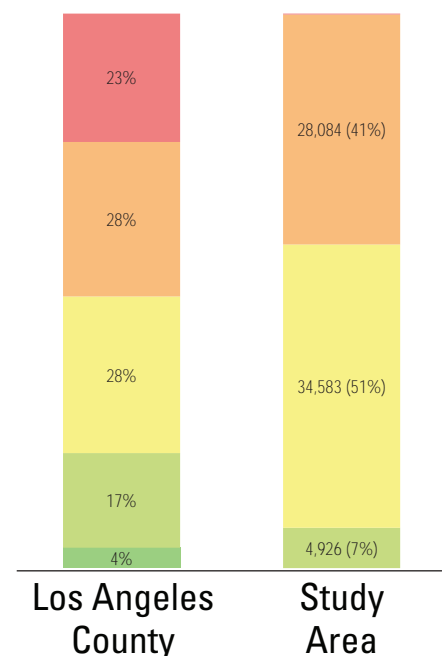
\*Calculated using the following weighting: (20% x Park Acre Need) + (20% x Distance to Parks) + (60% x Population Density)



## PARK NEED CATEGORY

- Very High
- High
- Moderate
- Low
- Very Low
- No Population
- Area within 1/2 mile walk of a park

## HOW MANY PEOPLE NEED PARKS?



## AMENITY QUANTITIES AND CONDITIONS

Park Name	Condition	General Infrastructure Condition	Open Lawn/ Turf Area	Amenities																
				Tennis Courts	Basketball Courts	Baseball Fields	Soccer Fields	Multipurpose Fields	Fitness Zones	Skate Parks	Picnic Shelters	Playgrounds	Swimming Pools	Splash Pads	Dog Parks	Gymnasiums	Community/Rec Centers	Senior Centers	Restrooms	Total
Alta Vista Park	Good			8		3						1								12
	Fair							1									1			2
	Poor						1						1						1	3
Anderson Park	Good			2							2	2								6
	Fair					2														2
	Poor				1			1									1	1		4
Andrews Park	Good											1								1
	Fair							1												1
	Poor										1									1
Aviation Park	Good																			0
	Fair						1								1			1		3
	Poor								1			1								2
Beverly Parkette	Good																			0
	Fair											1								1
	Poor																			0
Czuleger Park	Good																			0
	Fair																			0
	Poor																			0

### AMENITY CONDITIONS SUMMARY



Alta Vista Park



Anderson Park



Andrews Park



Aviation Park



Beverly Parkette

## AMENITY QUANTITIES AND CONDITIONS

Park Name	Condition	General Infrastructure Condition	Open Lawn/ Turf Area	Amenities																
				Tennis Courts	Basketball Courts	Baseball Fields	Soccer Fields	Multipurpose Fields	Fitness Zones	Skate Parks	Picnic Shelters	Playgrounds	Swimming Pools	Splash Pads	Dog Parks	Gymnasiums	Community/Rec Centers	Senior Centers	Restrooms	Total
Dale Page Park	Good																		0	
	Fair				1							1							2	
	Poor				1												1		2	
Dominguez Park	Good					2												1	3	
	Fair																	0		
	Poor							2		1	2							5		
Ensenada Parkette	Good																	0		
	Fair																	0		
	Poor																	0		
Ford Parkette	Good																	0		
	Fair																	0		
	Poor										1							1		
Franklin Park	Good																	0		
	Fair																	0		
	Poor				1					3	1						1	6		
Fulton Playfield	Good							1										1		
	Fair																	0		
	Poor																	0		

### AMENITY CONDITIONS SUMMARY



Dale Page Park



Dominguez Park



Ford Parkette



Franklin Park



Fulton Playfield

## AMENITY QUANTITIES AND CONDITIONS

Park Name	Condition	General Infrastructure Condition	Open Lawn/ Turf Area	Amenities																
				Tennis Courts	Basketball Courts	Baseball Fields	Soccer Fields	Multipurpose Fields	Fitness Zones	Skate Parks	Picnic Shelters	Playgrounds	Swimming Pools	Splash Pads	Dog Parks	Gymnasiums	Community/Rec Centers	Senior Centers	Restrooms	Total
General Eaton #1 Parkette	Good											1							1	
	Fair																		0	
	Poor																		0	
Gregg Parkette	Good																		0	
	Fair				1						1								2	
	Poor																		0	
King Harbor OS	Good										1							1	2	
	Fair											1							1	
	Poor																		0	
La Paz Parkette	Good											1							1	
	Fair																		0	
	Poor																		0	
Lilienthal Park	Good																		0	
	Fair																		0	
	Poor							1				1						1	3	
Massena Parkette	Good											1							1	
	Fair																		0	
	Poor																		0	

## AMENITY CONDITIONS SUMMARY



General Eaton #1 Parkette



Gregg Parkette



King Harbor OS



La Paz Parkette



Lilienthal Park



Massena Parkette



## AMENITY QUANTITIES AND CONDITIONS

Park Name	Condition	General Infrastructure Condition	Open Lawn/ Turf Area	Amenities																	
				Tennis Courts	Basketball Courts	Baseball Fields	Soccer Fields	Multipurpose Fields	Fitness Zones	Skate Parks	Picnic Shelters	Playgrounds	Swimming Pools	Splash Pads	Dog Parks	Gymnasiums	Community/Rec Centers	Senior Centers	Restrooms	Total	
Mathews Parkette	Good																			0	
	Fair																			0	
	Poor										1	1								2	
McNeill Parkette	Good																			0	
	Fair																			0	
	Poor																			0	
Moonstone Park	Good																			0	
	Fair																			0	
	Poor							1												1	
Perry Allison Playfield	Good																			0	
	Fair																			0	
	Poor							1												1	
Perry Park	Good			2	2															4	
	Fair											1				1				2	
	Poor																1	1		2	
Redondo Beach Pier	Good																			0	
	Fair																			0	
	Poor																			0	

### AMENITY CONDITIONS SUMMARY



Mathews Parkette



Moonstone Park



Perry Allison Playfield



Perry Park

## AMENITY QUANTITIES AND CONDITIONS

Park Name	Condition	General Infrastructure Condition	Open Lawn/ Turf Area	Amenities																
				Tennis Courts	Basketball Courts	Baseball Fields	Soccer Fields	Multipurpose Fields	Fitness Zones	Skate Parks	Picnic Shelters	Playgrounds	Swimming Pools	Splash Pads	Dog Parks	Gymnasiums	Community/Rec Centers	Senior Centers	Restrooms	Total
Sneary Parkette	Good																		0	
	Fair											1							1	
	Poor																		0	
Townsend Parkette	Good											1							1	
	Fair																		0	
	Poor																		0	
Veterans Park	Good															1			1	
	Fair							1									1	1	3	
	Poor											2							2	
Vincent Park	Good																		0	
	Fair											1							1	
	Poor																		0	
Totals:	Good			10	2	7	0	1	0	0	4	7	0	0	0	0	1	0	2	34
	Fair			0	2	2	1	3	0	0	0	7	0	0	0	1	2	1	2	21
	Poor			0	3	0	1	4	3	0	6	10	0	0	0	0	0	3	5	35

### AMENITY CONDITIONS SUMMARY



Sneary Parkette



Townsend Parkette



Veterans Park



Vincent Park

Miles of trails inside parks: 1.5

Miles of trails outside of parks: 3

# PARK NEEDS FRAMEWORK: COUNTYWIDE ASSESSMENT OF NEED

The results of the analysis of the park metrics were used to determine an overall park need level for each Study Area. Please refer to Section 3.0 Park Needs Framework of the main report for additional information.

City of Redondo Beach (#186) has a moderate park need.

