

Update 09/2021

Redondo Beach Transit Center
PUBLIC ART PROJECT

Artist | Volkan Alkanoglu



Create a novel work of Public Art which celebrates the natural and cultural environments of Redondo Beach while creating a moment of inspiration for the community and its visitors.

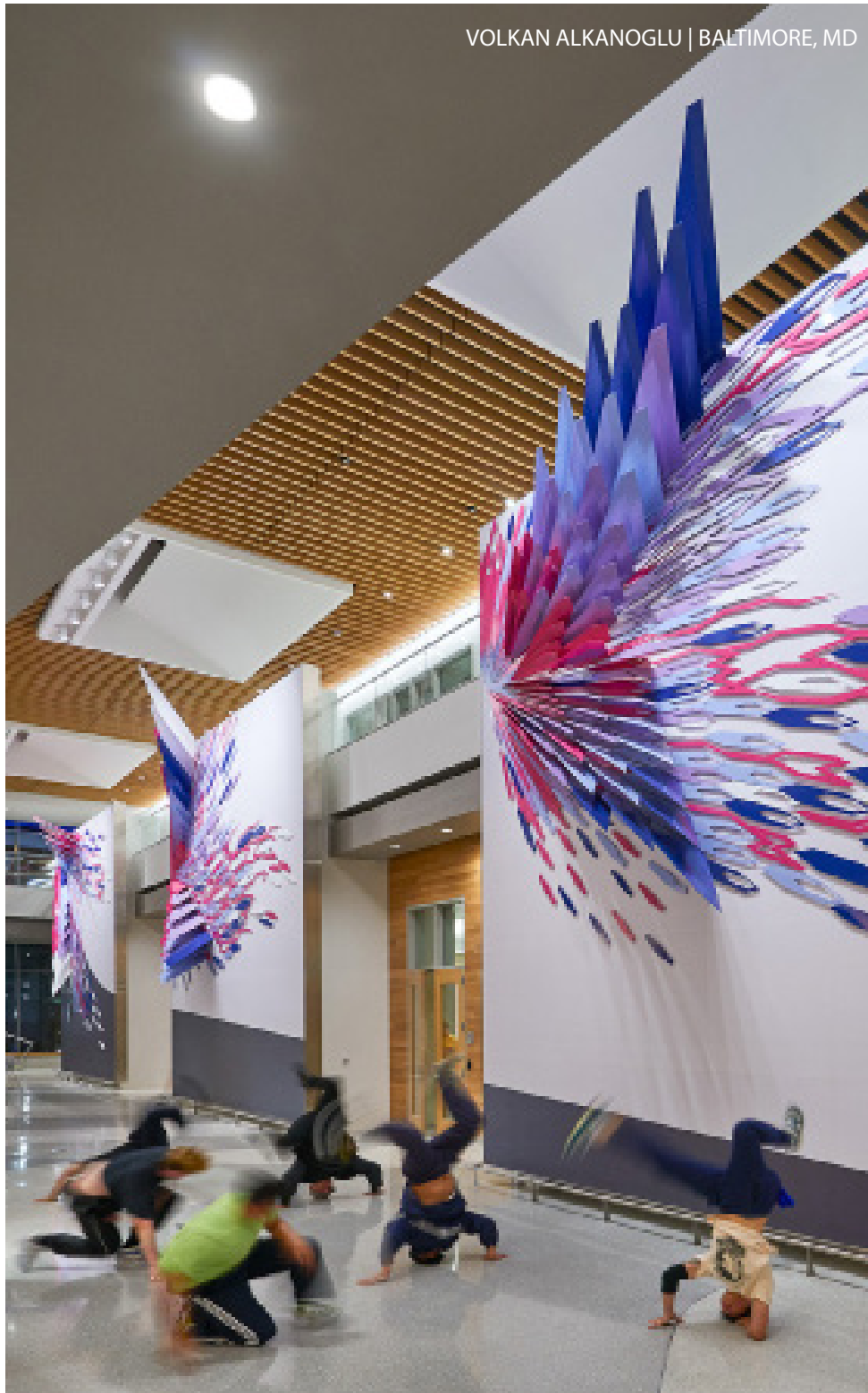
MISSION

VOLKAN ALKANOGU | PORTLAND, OR



WE WANT TO
INSPIRE

VOLKAN ALKANOGU | BALTIMORE, MD



BE
OPTIMISTIC

VOLKAN ALKANOGU | DENVER, CO



MAKE A
DESTINATION

VOLKAN ALKANOGLU | DURANGO, CO



CREATE
EXPRESSION

VOLKAN ALKANOGLU | FORT LAUDERDALE AIRPORT, FL



PROVIDE
CONNECTIVITY

VOLKAN ALKANOGU | BOSTON, MA



LOOK INTO THE
FUTURE

VOLKAN ALKANOGU | SALT LAKE CITY, UT



CREATE
WONDER

VOLKAN ALKANOGU | DENVER, CO



ART PROPOSAL

REDONDO BEACH PUBLIC ART 'GATE WAVE'

Dear John La Rock,

In cooperation with the City of Redondo Beach Public Art Program our design strategy for a new and contemporary Public Art project for the City's new Redondo Beach Transit Centre located at the entry plaza location at 1521 Kingsdale Avenue, Redondo Beach, California, will be a Gateway to the 21st Century, that celebrates the notion of public transportation, provides an aesthetically pleasing addition to the cultural qualities of the community, and resonates with a larger audience.

CITY HISTORY

History reveals of Redondo Beach as an important driver in the realm of public transportation including the Pacific Steamship Company whose steamers stopped at Redondo four times a week, at one of its three piers, as part of regular runs between San Francisco and San Diego; or the Redondo Railway Company and the Santa Fe Railroad which left Los Angeles daily for Redondo at regular intervals and eventually being served by Henry Huntington's Big Red Electric Cars.

With our commitment to innovation and high quality design, the proposed art project will feature an unparalleled design vision constructed with the most leading edge technologies, durable materials, and fabrication methods to celebrate not just the idea of transportation, but also of arrival and departure. The art work will comprise of a new Gateway structure which forms an elegant symbiosis with the Transit Centre and provides a strong and visually pleasing and historic addition to the identity of the city.



Redondo Harbour, 1940



Redondo Beach Public Parade, 1937

EXPERIENCE

As an artist and designer, I have the experience and analytical capability to create innovative work and spatial design solutions. Our architectural work and projects have been build, exhibited, and installed in several leading public institutions worldwide including New York's Union Square Park, the Los Angeles WU Hollywood Gallery, London Royal Academy of Arts, Venice Architecture Biennial, and the Atlanta Young Architects Forum to name a few.



Paris Metro Sign



Redondo Beach Sign

INSPIRATION

The inspiration for our work comes from concepts informed by cultural, technological and social dimensions and the belief that a design project in its contemporary manifestation can create meaningful experiences to a large and diverse audience. The design and formal language of this Public Art Project draws a strong conceptual connection to the importance of public transportation and the use of the motorised vehicle as a catalyst for social, economical and technical improvement in California. We want to form an entrance and gateway that celebrates the idea of the Transit Centre similar to the famous Paris Metro entrances in France. The project serves as a communication device playfully allowing the public to interact and engage with the variety of moire effects within the colourful pattern and ephemeral qualities of light and shadows provided. The symbiotic and fluid curvature of the art project also reflects natural dynamics such as wind, sky and water of the Redondo Beach environment within the community.

SYNTHESIS & MATERIAL

The art project is conceived as a precious ark in both its sweeping, curvilinear design and its function as a representative of local, cultural and natural synthesis. The colourful components have been designed with extreme control over dynamic, form and spatiality. In daylight the art appears as a multiplicity of surfaces, unified and solid, offering views from the under passing adjacent walkways and while approaching the Transit Centre. The perception of the art work creates a dynamic ambiance providing a inspiring experience for all visitors and strong identity for the City of Redondo Beach

The at work assumes an elegant, sculptural presence on its site and alludes, in a quiet way, to natural dynamic forces such as wind, sand, water and speed. By night the project is lit and made vivid in its internal patterning. The structure opens its additional qualities, displaying its beautiful internal world through light, colour and shadow. The dynamic and gradient colour is a deliberate, architectural gesture that acknowledges the life of the City as a vital entity of ongoing action and works with the important cultural patrimony within.



Surfing Wave



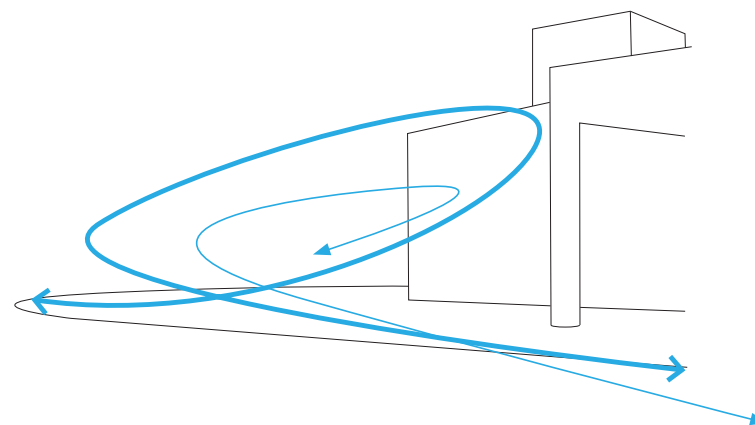
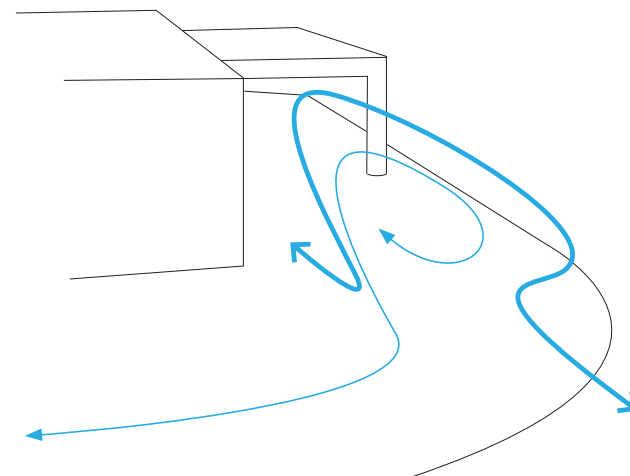
Sand Dunes

We are confident that our innovative design solution, interest in public art and thoughtful planning experience can result in an optimum solution for a new Public Art Project in the City of Redondo Beach, California.

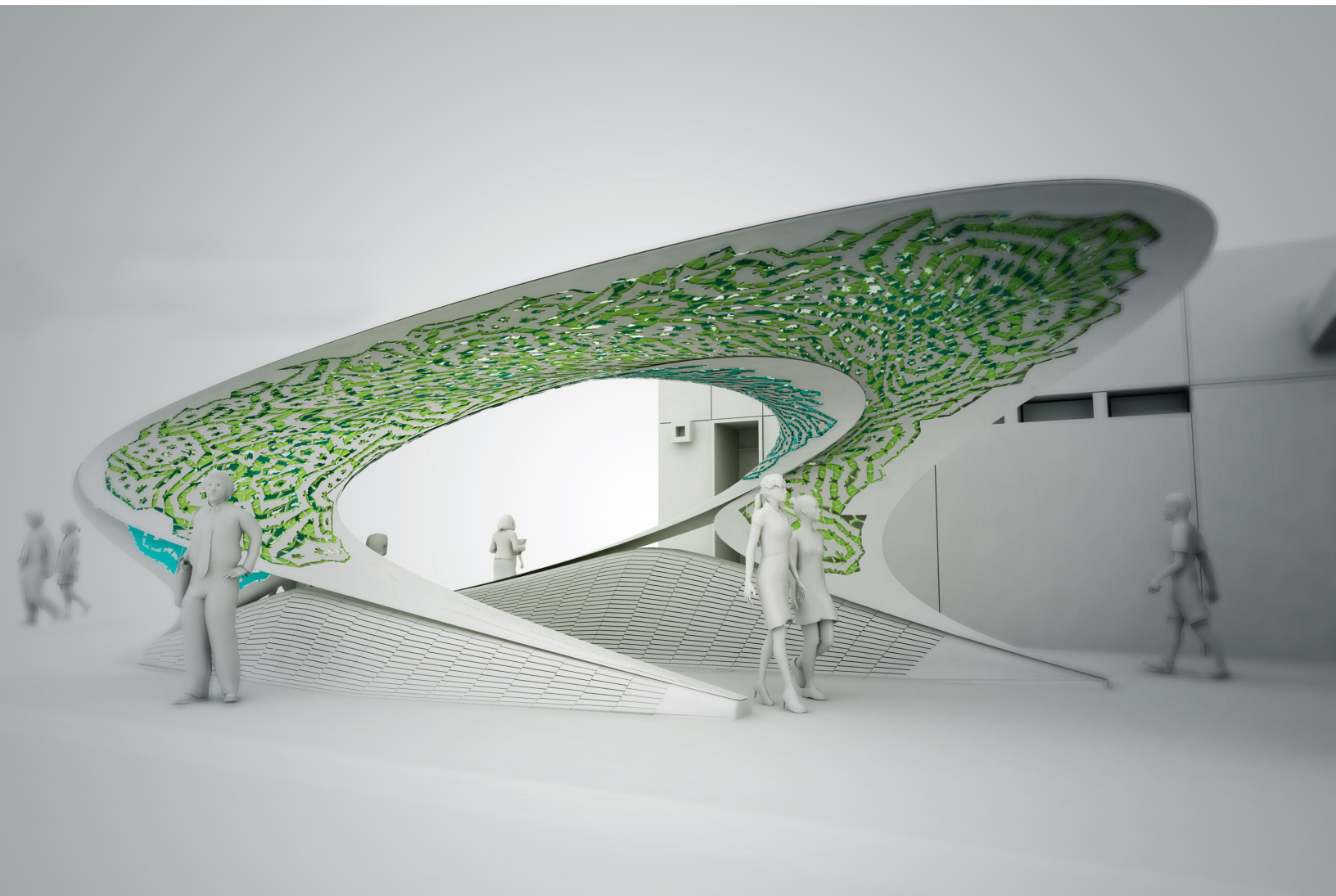
Thank you for the opportunity to present our ideas to the committee and we are very much looking forward to be part of this exciting project.

Kind Regards,

Volkan Alkanoglu



Dynamic Flow Diagrams



VOLKAN ALKANOGU | BALTIMORE, MD



LOGISTICS

BUDGET

The required budget for the project is \$270,000. Our design proposal is projected to stay within the margin of this benchmark due to our innovative fabrication techniques, our collaborative nature, our previous experience in construction, our project management record of similar projects and full understanding of project logistic. We have attached a breakdown and basic cost estimate.

Artist Fee: \$10,000

Production Design: \$18,797.62

Project Management + Administration: \$5,549.77

Structural Engineering: \$8,878.88

Materials + Shop Consumables + CNC Vendor Processing: \$50,877.38

Fabrication Labor: \$86,230.37

Surface Coating/Patina: Materials + Consumables + Labor: \$40,909.88

Packing + Crating + Freight: \$14,023.62

Site Installation Labor + Travel Expenses + Equipment Rental: \$34,732.48

TOTAL BUDGET: \$270,000

1. Fabrication including but not limited to the following items: Material, labour, fabrication
2. Materials including but not limited to the following items: Material, labour, cleaning, degreasing, assembly, storage, tools
3. Painting including but not limited to the following items: Paint, labour, powder-coating process, primer, cleaning
4. Transportation including but not limited to the following items: Material, labour, supplies, protect, packaging, shipping, receiving, storage, coordination
5. Installation including but not limited to the following items: Labour, supplies, scaffolding, equipment
6. Design Fee including but not limited to the following items: Artist fee, consultant Fee, overhead, engineering, permits
7. Other expenses including but not limited to the following items: Supplies, prints, prototype, scale models, presentation material, communication, services, insurance cost, speciality equipment, tools

CONTACT

Volkan Alkanoglu
1378 NW 18TH AVE, Unit 530
Portland, OR 97209, USA
+1 857.654.4126
volkan@alkanoglu.com
www.alkanoglu.com

TIMELINE

The Schedule for the Public Art project is divided into three lead phases including:

Detail Design, Fabrication, and Installation.

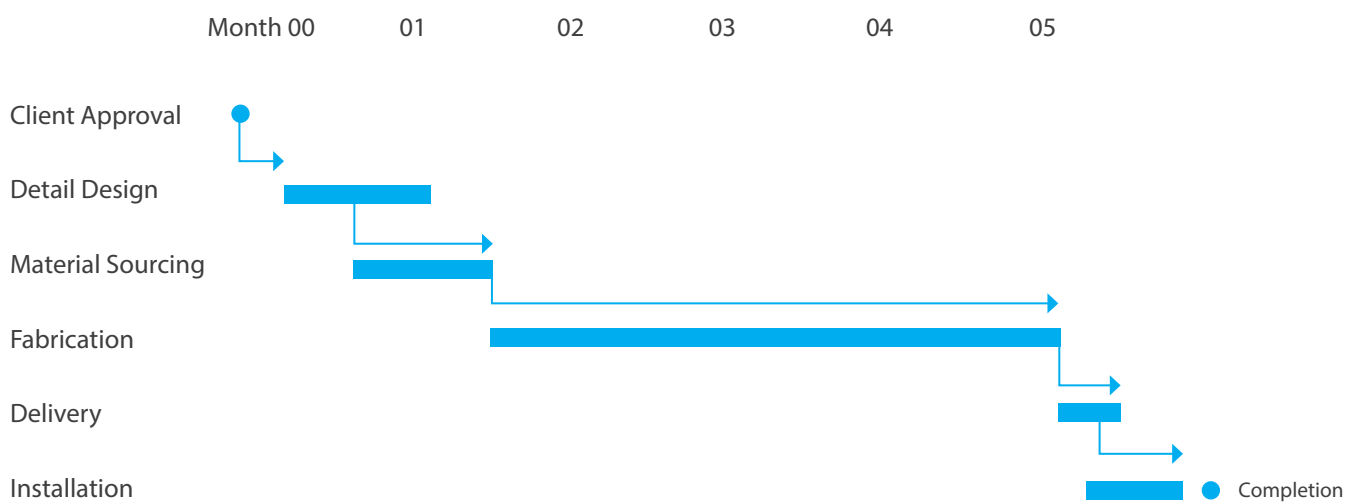
The schedule also allows for intermediate updates with the representatives to inform on design process and to confirm project logistics.

After appointment and contract sign off, work will commence with the Detail Design of the art project. During this phase, we will develop the design, produce 3D models and a prototypes to test final form and enhance structural specifications. In addition, we will produce a more precise quantity survey and cost estimate for final calculations to ensure an efficient and sustainable procurement.

The Detail Design phase allows for design optimization and the production of a final 3D model to establish Construction Documentation and to write final material specifications.

The documentation will be submitted to our fabricators to tender for parts of the project including material.

The Installation phase will see transportation of the components from the manufacturer to the site and oversee Installation at the final location. While installing the art project we will also hand over a maintenance description manual. The installation will be completed and handed over to the client.



CONTACT

Volkan Alkanoglu
1378 NW 18TH AVE, Unit 530
Portland, OR 97209, USA
+1 857.654.4126
volkan@alkanoglu.com
www.alkanoglu.com



THANK YOU